



WORLD
EQUESTRIAN CENTER
OCALA, FL

EXPOSITION CENTERS & MULTIPURPOSE EVENT SPACE



TRADE SHOWS | CONVENTIONS | CONFERENCES | EVENTS | TOURNAMENTS

Quality. Class. Distinction.®
wec.net



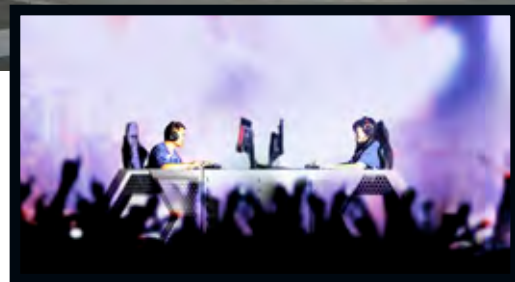
At the intersection
of trade shows, meetings and hospitality,
the World Equestrian Center – Ocala
offers a rare combination of quality
and capacity. This world-class destination
is home to five exposition centers and
four climate-controlled arenas with over
1,000,000 square feet of flexible indoor
space. In addition, this facility includes
multiple outdoor venues and expansive
fields to accommodate a variety of pop
culture, social and athletic events.





OVERVIEW

The well-appointed exposition centers, indoor arenas and outdoor sporting fields make this a premier event destination for countless industries including automotive, consumer, pop culture, animal enthusiasts and more. Indoor arena space includes state-of-the-art capabilities, enclosed announcement booth, flexible seating and vendor space.





EXPOSITION CENTERS

Five state-of-the-art exposition centers each provide 132,300 square feet of contiguous column-free space, making this the perfect venue for local, regional and national events. The centers are ideal for trade shows, sports tournaments, social and pop culture events.

These multipurpose venues are located near major thoroughfares and are easily accessible to surrounding airports including Ocala, Gainesville, Orlando and Tampa.

WORLD EQUESTRIAN CENTER - EXPOSITION CENTERS	
Dimensions	540' x 245'
Square Feet	132,300
Theatre	3,240
Banquet (Rounds of 10)	1,920
Reception	2,800
Classroom	2,160
Exhibit (10x10 booths)	350
Ceiling Height	50' (Highest) 18' (Lowest point)
Floor Finish	Concrete
Floor Ports	22 per hall
Utilities (Include water and power)	Electricity Phase 1 and 3 in floor ports
Lighting	Programmable LED
Offices	3 show offices
Load-In/Load-Out	(14) 20' freight doors and dedicated dock slip
Food Service	Built in concessions stands in each hall; additional catering can be provided in the hall
Audiovisual	3 LED screens
Internet	High-speed WiFi
Other Amenities	On-site parking
Restrooms	32



AN EXTRAORDINARY PLACE TO SHOWCASE EXTRAORDINARY BEINGS

The exposition centers, indoor arenas and outdoor sporting fields at World Equestrian Center – Ocala make this facility perfect for canine shows:

- ◆ Conformation
- ◆ Agility
- ◆ Dock dogs
- ◆ Obedience
- ◆ Rally
- ◆ Scent Work and Tracking





ARENAS 1-4

Enjoy the comfort of climate-controlled arenas while being up close to the action! The four multipurpose, indoor arenas accommodate nearly 1,500 spectators in stadium-style seating.

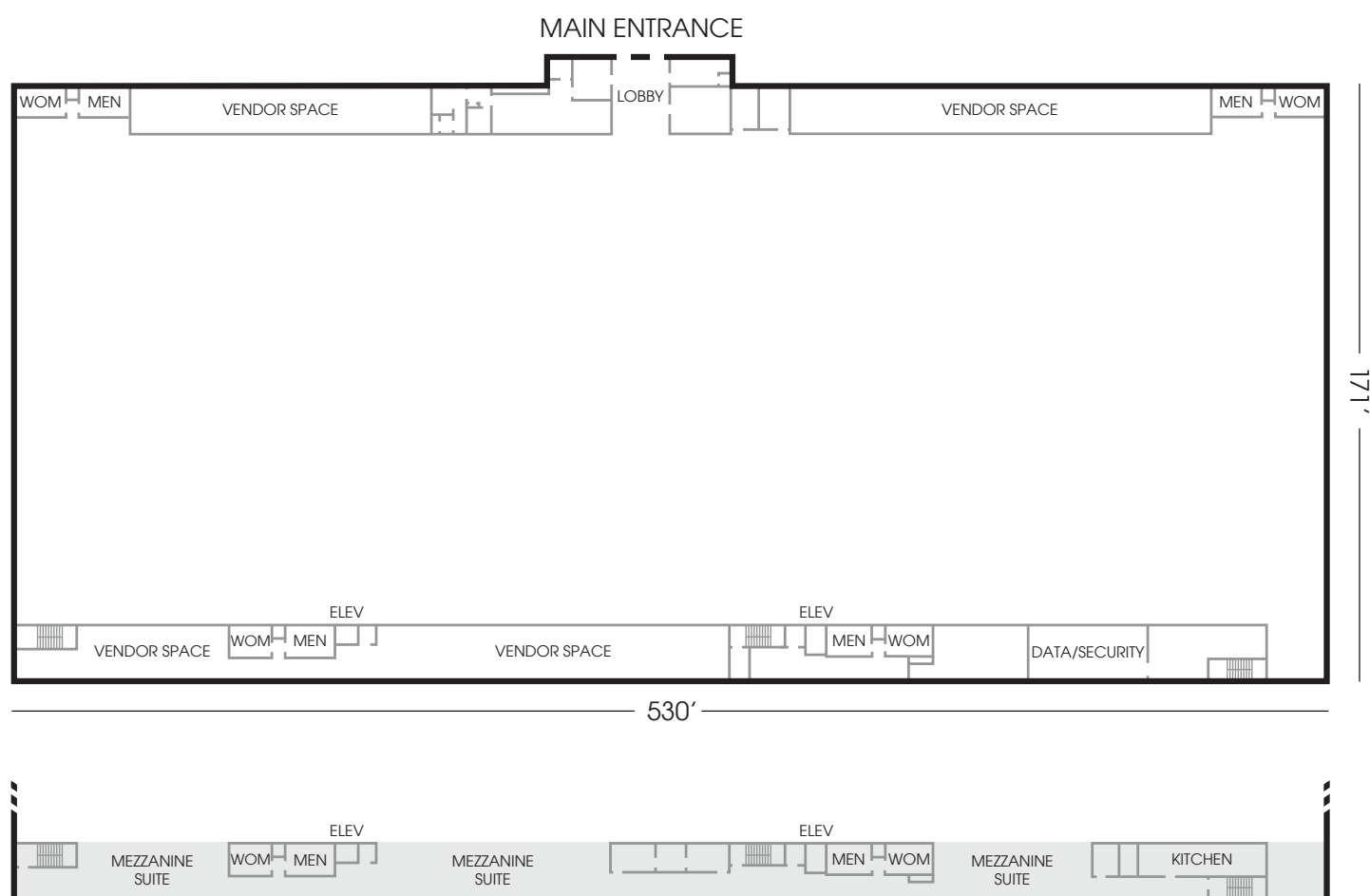
World Equestrian Center – Ocala features permanent stabling for more than 2,000 horses. Each equestrian barn has dedicated paths and covered waiting areas throughout the facility to help rider, groom and horse efficiently move to and from competition.

Private accommodations, including full-service catering, are available in private Mezzanine Suites. All attendees are encouraged to enjoy a wide variety of on-site amenities including dining and shopping.

ARENAS	
Dimensions	550' x 190'
Square Feet	91,000
Ceiling Height	35' (Highest) 18' (Lowest)
Mezzanine VIP Suites	Exclusive accommodations in each multipurpose arena.
Announcers and Judges Booth	(1) Arena 1 & 2 (2) Arena 3 & 4
Lighting	LED
Footing	All-weather footing
Freight Door Clearance	20'
Food Service	Multiple concessions and restaurants throughout the property. Catering available in Mezzanine VIP Suites
Audiovisual	3 LED screens
Internet	High-speed WiFi
Other Amenities	On-site parking

MEZZANINE SUITES – ARENA 1 & 2	
Mezzanine Suite 1	1,300 square feet 65' x 20'
Mezzanine Suite 2	2,000 square feet 100' x 20'
Mezzanine Suite 3	1,300 square feet 65' x 20'

MEZZANINE SUITES – ARENA 3 & 4	
Mezzanine Suite 1	3,000 square feet 150' x 20'
Mezzanine Suite 2	2,000 square feet 100' x 20'



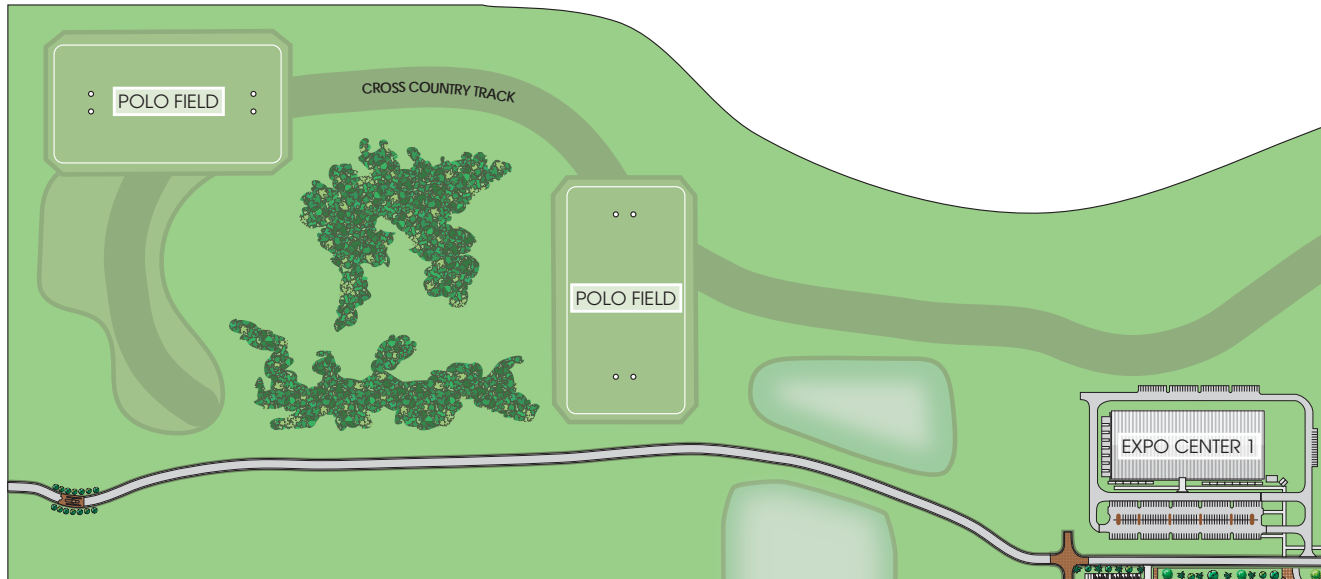


PERFORMANCE FIELDS

World Equestrian Center – Ocala can accommodate a wide variety of outdoor sporting events. The performance fields have tournament quality lighting and are ideal for various competitions such as lacrosse, soccer, cross-country, field hockey and more.







Artist's Conception

Details

MAKE THE DIFFERENCE

Golf carts are available to rent and designated cart paths cover the entire property. There is ample vehicle and golf cart parking for the convenience and comfort of exhibitors, participants, guests and spectators. Multiple stand-alone concession stands and restrooms can be accessed throughout the property.



©2017 World Equestrian Center, Ocala

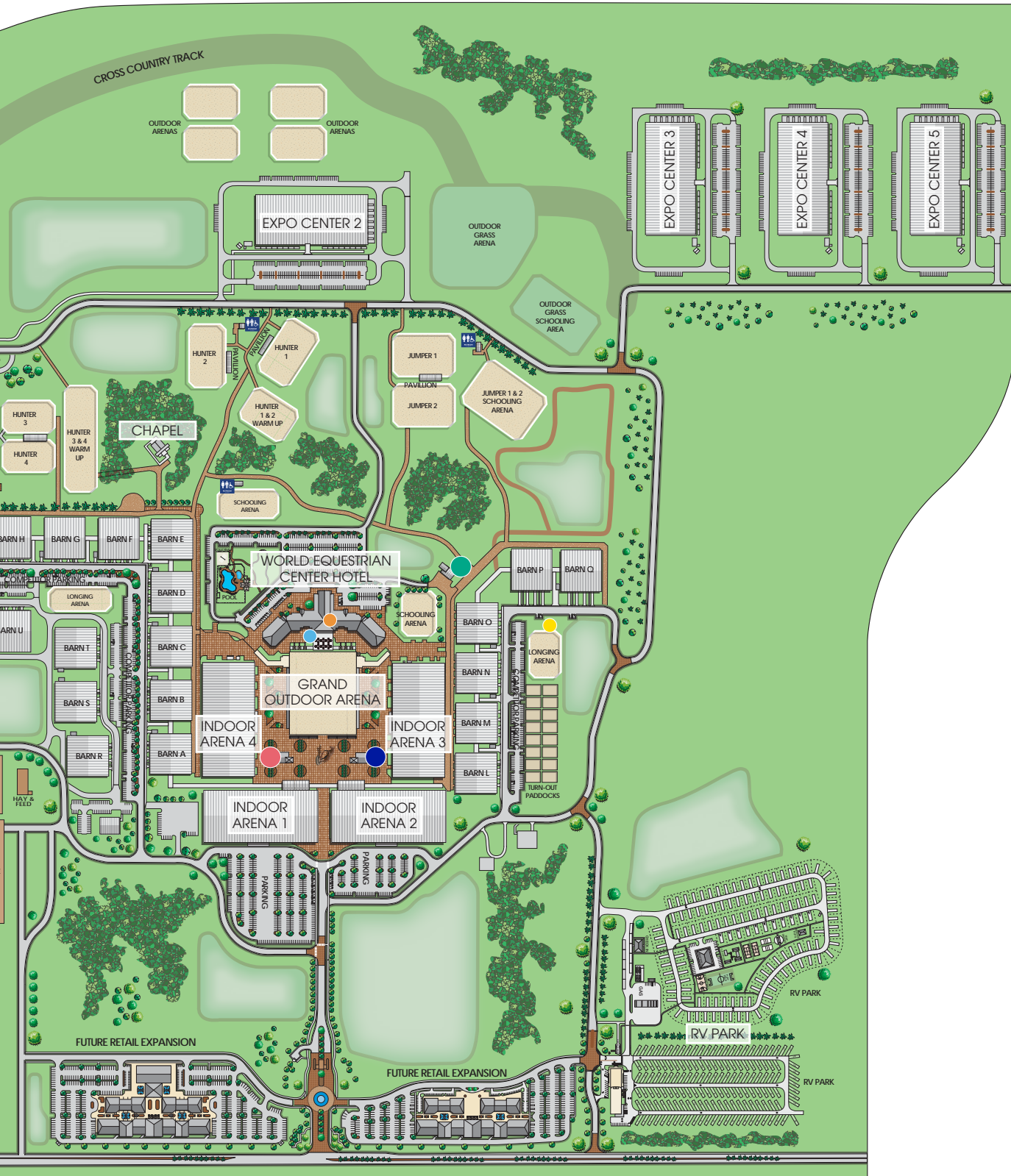
Artist's conceptual rendering is for convenience of reference only and should not be relied upon as representation, express or implied, of the final size, location or dimensions. Square footage, dimensions, specifications, features, structures and locations are approximate and subject to change or withdrawal at any time without prior notice. Developer reserves the right to make modifications in its sole discretion. No guarantee is made that the facilities or features depicted will be built, or if built, will be of the same type, size or nature as depicted. The map is not to scale. The land uses set forth on this map have not yet been approved by the State of Florida, Marion County or other agencies with jurisdiction over the property. Changes may be made during that approval process.



Legend

- Miss Tilly's Lollipops
- Viola & Dot's
- Filo's Mexican Cantina
- Ralph's Burger & Sandwich Shop
- The Yellow Pony (Inside World Equestrian Center Hotel)
- Stirrups (Inside World Equestrian Center Hotel)
- Farrier

SITE MAP





HOTEL

HOTEL ACCOMMODATIONS

The stately, 248-room hotel features luxurious rooms and suites with stunning views of the property. Spacious accommodations include king suites, a 1,200 square foot Vice Presidential Suite and a 2,200-square-foot Presidential Suite.





SALON AND SPA

The salon and spa is a 7,000 square-foot haven of the latest aesthetics, body treatments, hair and nail care, makeup artistry and a renewed sense of well-being. The spa atmosphere is a perfect blend of casual elegance. Our team is committed to providing authentic, enjoyable experiences designed to enhance your mood and promote relaxation.



FITNESS CENTER

The Fitness Center has the latest in exercise systems and equipment. From classic cardio workouts on our treadmills and exercise bikes, to a wide variety of weights, the Fitness Center has a little something for everyone. For those who prefer to stay outside and exercise, there are miles of walking and jogging trails throughout the property at World Equestrian Center.





RETAIL & DINING

Our luxury retail is an extension of the World Equestrian Center Hotel's elegance and splendor that provides convenient access to prestigious designers, fashion, beauty, décor and cuisine. This collection, spanning 13,000 square feet, features an unparalleled shopping and dining experience with unbridled access to the opulent equestrian lifestyle – all in one convenient location.





FILO'S MEXICAN CANTINA

Traditional Mexican flavors coupled with custom-made convenience make Filo's the perfect spot for all-day dining. Filo's serves up breakfast bowls, street tacos, fajitas, quesadillas and much more in a vibrant dining room and open-air patio.



MISS TILLY'S LOLLIPOPS

Indulging is strongly encouraged at this unique sweet shop where specialty ice cream flavors and homemade fudge are the stars. With an array of chocolates, confections and coffees, Miss Tilly's is the perfect place for a tasty treat.



RALPH'S BURGER & SANDWICH SHOP

Home to a classic Americana, diner-inspired menu, Ralph's invites you to enjoy signature burgers, salads and sandwiches topped off with a homemade milkshake. Open for breakfast, lunch and dinner, start your day with a breakfast sandwich or enjoy an evening slice of pie.



VIOLA & DOT'S ITALIAN KITCHEN & PIZZERIA

Design your own flatbread, salad or pasta masterpiece with an assortment of delicious meats and toppings. Viola & Dot's features pizzas and calzones crafted with homemade dough, classic Italian entrees and decadent sweet desserts.



EMMA'S PATISSERIE: COMING SOON

A blissful, freshly baked array of authentic French macarons and European-inspired pastries are served within an ambiance of old-world elegance at this very special shop located within the Equestrian Hotel.



THE YELLOW PONY: COMING SOON

Boasting an outdoor patio and fireplace, this lobby gastro lounge offers shareable starters, pub fare, traditional draft beers, bourbons and whiskeys.



STIRRUPS: COMING SOON

Prime steaks and chops, sustainable Florida seafood and seasonal specialties are served in a refined dining room and terrace overlooking the Grand Outdoor Arena. Stirrups offers a 1500 bottle wine cellar to complement your menu selections as well as all-day dining.





VETERINARY CLINIC & DAYCARE

Nestled in the southeast corner of World Equestrian Center – Ocala, the 41,000-square-foot veterinary clinic is a 3-in-1 facility. Step through the doors and you will be greeted by our accommodating staff of professional groomers and specialty veterinarians. While you're there, be sure to inquire about available adoptions – you might just leave with a new family member! Canines, felines and equines are all welcome, be it for a routine checkup or an extended stay.

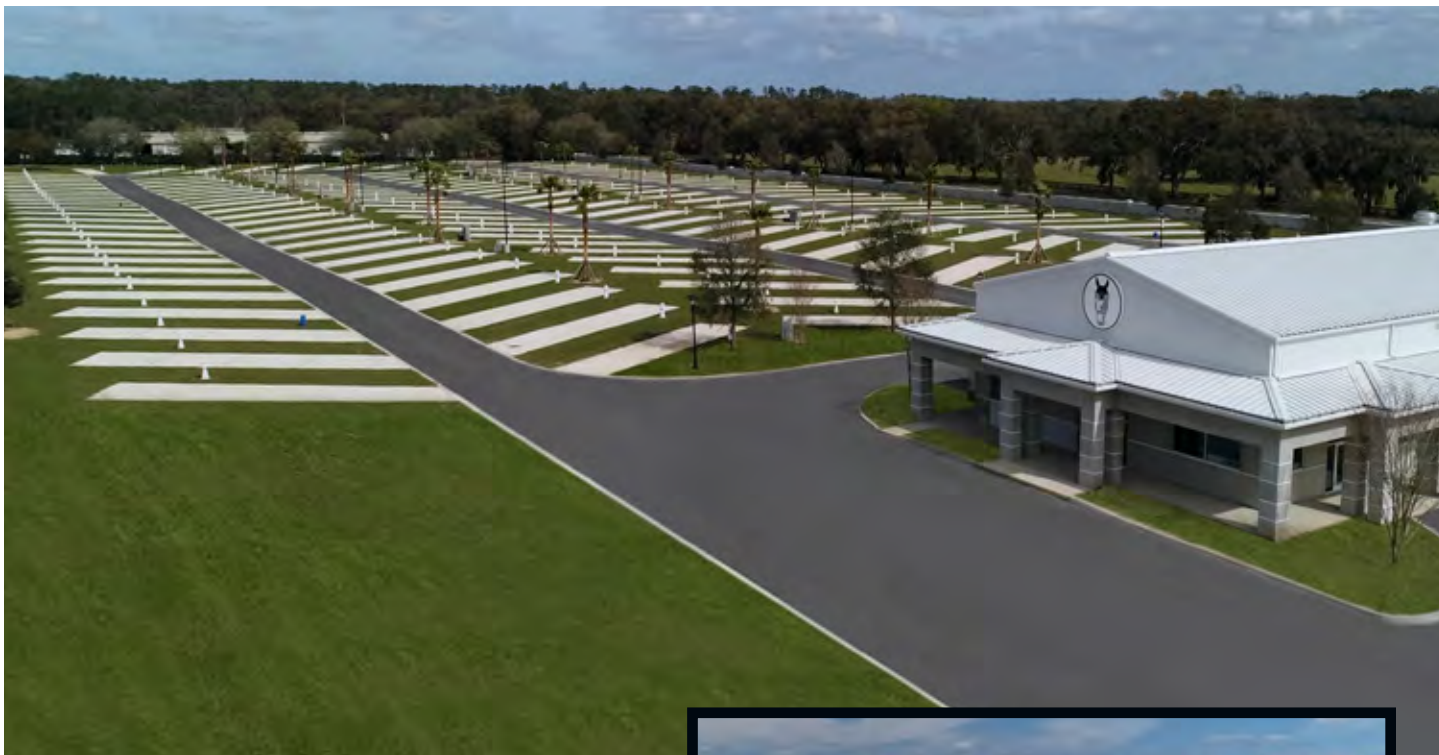
VETERINARY CLINIC AND HOSPITAL

- ◆ Dedicated surgical and recovery rooms
- ◆ X-ray, CT, ultrasound and MRI scans
- ◆ Farrier room
- ◆ Induction/recovery suites
- ◆ Lab and Pharmacy
- ◆ Equine therapy pool, aqua treadmill, salt room and vibration therapy

DAYCARE AND BOARDING

- ◆ Indoor/outdoor dog suites
- ◆ Cat boarding homes
- ◆ Multiple outdoor dog runs
- ◆ Full grooming services
- ◆ Indoor walking track
- ◆ Indoor cat play room
- ◆ Outdoor splash pad

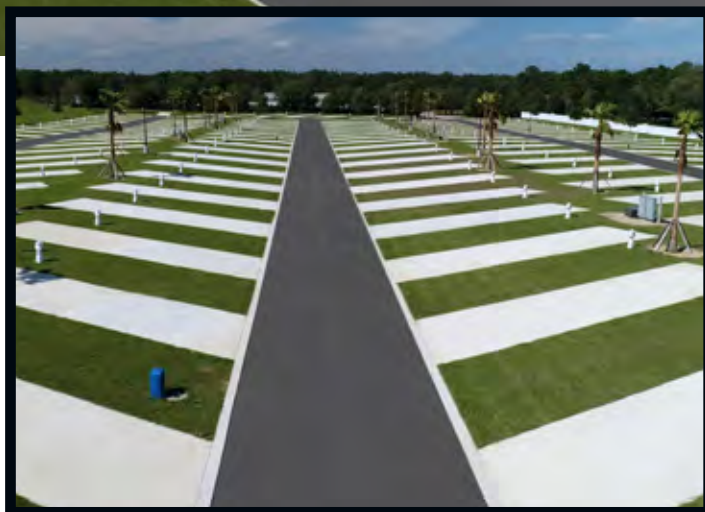




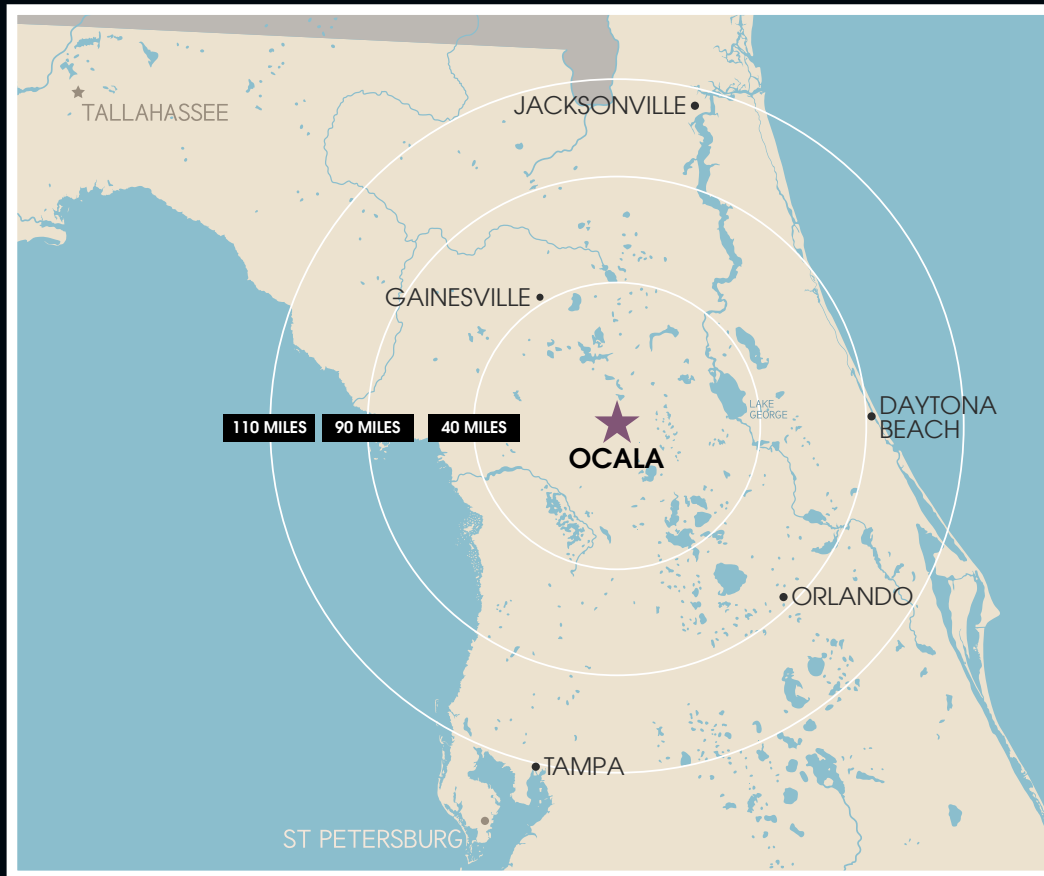
RV PARK

The spacious RV Park boasts nearly 300 concrete parking slips with water, power and sewer hook-ups.

The park offers a well-stocked general store that includes quality coffee, hot and cold food items and an impressive selection of beverages. In addition, there is a laundromat and fueling station.



Ocala PROXIMITY



World Equestrian Center – Ocala is situated on 6,000 acres of gorgeous rolling hills in the heart of North-Central Florida.

Home to the world's largest and most prestigious equestrian facility, this exclusive property with mixed-use capacity is poised to be a one-of-a-kind event destination.

OCALA International Airport	5 miles
GAINESVILLE Regional Airport	40 miles
DAYTONA BEACH International Airport	80 miles
ORLANDO International Airport	90 miles
TAMPA International Airport	90 miles
JACKSONVILLE International Airport	110 miles





1390 NW 80th Avenue | Ocala, Florida 34482 | 352.414.7900

wec.net •   

Quality. Class. Distinction.®