

Revised July 27, 2021

WORLD EQUESTRIAN CENTER®
OCALA, FL

THE
CHAMPIONSHIP
SHOW
20  21

\$2 Million in Cash and Prizes

September 29 – October 24



MR. PICKLES & SAILOR BEAR
TOY SHOPPE




Located in:

THE
EQUESTRIAN

1st FLOOR

TABLE OF CONTENTS

CLASSES

FUTURITY 6
TRAIL STAKE 10
RANCH RIDING & RAIL STAKES 11

EVERYTHING YOU NEED TO KNOW

GENERAL RULES AND CONDITIONS 12

BARREL FUTURITY & SWEEPSTAKES 18
BARREL RACING CONDITIONS 19
WESTERN PLEASURE & HUNTER UNDER SADDLE CONDITIONS. 20

CHAMPIONSHIP SHOW SCHEDULE

GRAND ARENA
SEPTEMBER 29-OCTOBER 1 22
OCTOBER 2-3 25
OCTOBER 4-6 27
OCTOBER 7-8 28
OCTOBER 9 36
OCTOBER 9-10 39

ARENA 2
OCTOBER 1-4 42

ARENA 5
OCTOBER 8-10 44

HUNTERS 3 & 4 46
BARREL FUTURITY 46
HORSEMANSHIP CHALLENGE - WIN A TRUCK 48
REINING SHOW 49
ALL-AROUND AWARDS 50
SPONSORS 51

OCALA SITE MAP 32



Sergeant Reckless in the Grand Plaza
at World Equestrian Center

World Equestrian Center-Ocala Championship Show

Futurity Classes

All Futurity Classes are NSBA Approved

Payment Due.....August 1, 2021

2-Year-Old Maiden Western Pleasure Futurity
(Open & Limited)

Estimated Purse - \$75,000

2-Year-Old Western Pleasure Non-Pro Futurity
(Open & Limited)

Estimated Purse - \$75,000

\$2,500 Limited Horse Western Pleasure Futurity
(Open & Limited)

Estimated Purse - \$100,000

\$5,000 Maturity Horse Western Pleasure Futurity
(Open & Limited)

Estimated Purse - \$75,000

\$10,000 Maturity Horse Western Pleasure Futurity
(Open & Limited)

Estimated Purse - \$75,000



WORLD
EQUESTRIAN CENTER
OCALA, FL

EXPOSITION CENTERS & MULTIPURPOSE EVENT SPACE



TRADE SHOWS | CONVENTIONS | CONFERENCES | EVENTS | TOURNAMENTS

Submit a Request for Proposal at ocala.wec.net/rfp

Learn more at ocala.wec.net

Quality. Class. Distinction.
wec.net



Guest rooms at The Equestrian Hotel offer multiple arrangements, perfect for individuals and families. Custom designed furniture from the Estate Collection by the Roberts Design team occupies each spacious room.

Beds are lined with fine, European linens and bathrooms contain frameless showers and marble interiors. Separate living and dining space provides an authentic, in-room experience and a large, Sub-Zero refrigerator allows easy food storage.

The Equestrian Hotel is canine-friendly and provides amenities to ensure dogs are comfortable in each accommodation. Speak with hotel staff to learn more about hotel room amenities, as well as the benefits found in the hotel's exclusive luxury suites.

Guests are encouraged to download the World Equestrian Center app on the App Store or Google Play to engage with the following features:

- Check availability/book hotel reservations
- Order online from WEC restaurants
- Submit hotel housekeeping requests
- Use your phone as a room access key

To check availability, view rates and/or reserve a golf cart

Ocala.wec.net/stay
866.478.9267



World Equestrian Center-Ocala Championship Show

Futurity Classes

All Futurity Classes are NSBA Approved

Payment Due.....August 1, 2021

Maturity Open Western Pleasure Futurity
 (Open & Limited)

Estimated Purse - \$75,000

Maturity Non-Pro Western Pleasure Futurity
 (Open & Limited)

Estimated Purse - \$100,000

2-Year-Old Maiden Hunter Under Saddle Futurity
 (Open & Limited)

Estimated Purse - \$75,000

3-Year-Old Hunter Under Saddle Futurity
 (Open & Limited)

Estimated Purse - \$85,000

3-Year-Old Non-Pro Hunter Under Saddle Futurity
 (Open & Limited)

Estimated Purse - \$75,000

Maturity Open Hunter Under Saddle Futurity
 (Open & Limited)

Estimated Purse - \$60,000

Maturity Non-Pro Hunter Under Saddle Futurity
 (Open & Limited)

Estimated Purse - \$60,000

World Equestrian Center-Ocala

Championship Show

Trail Stakes Classes

All Stakes Classes are NSBA Approved

Payment Due.....August 1, 2021

*** 3-Year-Old Open Trail Stakes**

*Estimated Purse - **\$75,000***

*** 3-Year-Old Non-Pro Trail Stakes**

*Estimated Purse - **\$50,000***

*** 4 & 5-Year-Old Open Trail Stakes**

*Estimated Purse - **\$30,000***

*** 4 & 5-Year-Old Non-Pro Trail Stakes**

*Estimated Purse - **\$30,000***

*** Green Trail Stakes**

*Estimated Purse - **\$50,000***

*** Junior Horse Trail Stakes**

*Estimated Purse - **\$50,000***

*** Senior Horse Trail Stakes**

*Estimated Purse - **\$50,000***

**Open & Limited Division offered*

World Equestrian Center-Ocala

Championship Show

Ranch Riding & Rail Stakes Classes

All Stakes Classes are NSBA Approved

Payment Due.....August 1, 2021

Green Ranch Riding Stakes

*Estimated Purse - **\$30,000***

Junior Ranch Riding Stakes

*Estimated Purse - **\$30,000***

Senior Ranch Riding Stakes

*Estimated Purse - **\$30,000***

Open Ranch Riding Rail Stakes

*Estimated Purse - **\$30,000***



GENERAL RULES AND CONDITIONS

PAYMENT

- Full payment is due August 1st.
- Payments must be postmarked by the deadline date and received within three business days. We recommend payments be sent by certified mail. World Equestrian Center is not responsible for any lost or late entries.

CHECKS PAYABLE

Payments must be made in U.S. funds.

Please make checks payable to: Arena Horse Shows of Ocala

Mail Entries To:

Arena Horse Shows of Ocala llc
7340 N US Hwy 27
Box 20
Ocala, Florida 34482

NSF CHECK POLICY

- A penalty equal to the late fee for the missed payment, plus a \$35 processing fee will be charged for any NSF checks.

REFUNDS

- Refunds will not be given for any reason.

SUBSTITUTIONS

If a veterinarian statement is received by the World Equestrian Center – Ocala, stating that a horse entered is no longer able to show, the owner will be allowed to substitute another horse in the class, providing the substitute horse is owned by the same person who made the original entry. A substitution fee of \$200 must accompany the vet statement. Substitutions will be accepted until September 1st ONLY.

CHANGE OF OWNER

The World Equestrian Center – Ocala should be notified in writing of a change in ownership of any entry. A copy of the updated registration certificate must be included with the request to change ownership. Notification by phone will be accepted, but will not be considered final until a copy of the updated papers is received in the WEC-Ocala office.

STALL INFORMATION

- All horses with payments made and who will be shown at the World Equestrian Center – Ocala – Championship Show must have a stall. Payment for stalls must be made with regular entries by August 1st.
- World Equestrian Center – Ocala – Championship Show Books will be mailed in May. The entry form in the book should be filled out completely, including futurity class number and stalling information. The completed entry form should then be sent in with any other horse show entries. All horse show entries must be received by August 1st.

YELLOW PONY™

— IRISH PUB —

Perfect for families to relax after a long day amongst the showgrounds, The Yellow Pony welcomes guests with its signature stain-glass horse display, looking inward with a marquee overtop. Just beyond The Equestrian Hotel lobby, its atmosphere heralds an authentic Irish Pub. Guests may also choose to dine outdoors among the

patio gardens for another unique experience.

Shareable entrees and starters are among this pub's delectable cuisine, along with a host of sandwiches, salads and flatbreads to satisfy one's appetite. The Yellow Pony serves eclectic bourbons, cocktails and whiskeys in addition to fine wines from the Stirrups wine cellar.



ELIGIBILITY

- WEC – Championship Show Futurity and Stakes Classes are open to all breeds.
- WEC – Championship Show Barrel Racing Sweepstakes are open to all horses.
- NSBA Rules & Regulations do not pertain to Barrels, Reining or Cutting. No membership required.

HORSE MARKINGS AND IDENTIFICATION

- Horses may be matched for identification and age with their registration papers or a microchip.
- Owners of grade horses should include a color photo and vet statement verifying the age, color, markings, and owner of the entry.

NSBA RULES AND REGULATIONS

- Classes will follow NSBA rules unless stakes and futurity conditions differ from them. In this case, WEC – CS rules shall prevail.
- All horses that are entered in a WEC– all classes will be required to pay a \$7.50 NSBA Drug Fee per horse, due on August 1st with WEC – Championship Show Entries.
- All entries will require a Certificate of Eligibility. Horses holding a current BCF or SIF certificate will satisfy this requirement. For more information please contact the NSBA office.

MEDICATION RULES

- All WEC-Ocala Championship Show Stakes and Futurity events will follow NSBA medication guidelines and rules except Barrel, Reining and Cutting.
- All horses shall be subject to laboratory testing at the discretion of the show manager.
- Any owner, exhibitor, trainer or responsible party refusing to submit to laboratory testing will be disqualified and will be subject to disciplinary procedures.
- NSBA Medication rules are available from WEC - CS office or NSBA.com

INHUMANE TREATMENT

Inhumane treatment of any horse (as defined by NSBA Rule Book) will be grounds for disqualification of that horse and all awards will be forfeited.

FINAL DECISION

Decisions of the judges will be final. Entries will be accepted only upon this condition.

DISPUTES

Any dispute as to operation of classes, matters of protocol, procedures in lab testing, show management issues and all other issues, shall be decided by the show manager. The show manager's decision shall be final and considered acceptable by all exhibitors.



WORLD EQUESTRIAN CENTER – OCALA

offers golf carts for rent at the General Store adjacent to the RV park

Guests can take advantage of the network of golf cart paths weaving throughout the venue for easy transport. Ample space has been set aside for parking at major facilities.

To check availability, view rates and/or reserve a golf cart

Ocala.wec.net/stay
866.478.9267



Senior's RIB SHACK

in the Hunter Derby Arena
11am until we run out

PLATES

all plates are served with coleslaw, chips and pickles

FULL RACK	\$22
HALF RACK	\$12
PULLED PORK SANDWICH	\$11
HALF CHICKEN	\$18
QUARTER CHICKEN	\$10
COMBO PLATE	\$20
SMOKED SAUSAGE	\$8
ALL BEEF HOT DOG	\$6

BEVERAGES

DRAFT BEER	\$7
14 HANDS WINE CANS (375ml.)	\$12
FOUNTAIN COKE PRODUCTS	\$3
BOTTLED WATER	\$3.25

RIGHT OF CANCELLATION

The World Equestrian Center – Ocala – Championship Show reserves the right to cancel these events without notice and without liability any time prior to the contests. In this case, all entry money will be refunded.

EXPENSE WITHHOLDING

In WEC – Championship Show classes, 30% of the entry fee will be paid back. Regular entry fees will be included in the purse. Penalty payments will not be included in the purse. All fees paid in excess of the regular entry fee will be considered a penalty payment.

PAYMENT

- Payments must be postmarked by the deadline date and received within three business days. We recommend payments be sent by certified mail. World Equestrian Center is not responsible for any lost or late entries.

Arena Horse Shows of Ocala LLC
7340 N US HWY 27 Box 20
Ocala, FL 34482

World Equestrian Center – Ocala Championship Show

Barrel Futurity & Sweepstakes

BFA Approved

Payment Due.....August 1, 2021

Barrel Futurity

\$25,000 – *Added Purse*

5D Barrel Sweepstakes Open

\$20,000 – *Added Purse*

5D Youth Barrel Sweepstakes

\$10,000 – *Added Purse*

5D Open

\$10,000 – *Added Purse* + **\$25,000** - *Future Fortunes*

BARREL RACING CONDITION

ELIGIBILITY

Horses of any breed and any age are eligible to compete.

RULES

The Futurity classes will be conducted under BFA rules. Please note that the rules will be strictly enforced. Require that all entrance fees (less 20%) be added to prize money.

GO-ROUNDS AND FINALS

- There will be two go-rounds.
- Monies will be paid to the fastest times in each go-rounds.
- The average winner will be based on the fastest composite times from two go-rounds.
- A horse must have the same rider in the go-rounds. Any change in riders must be made by the show manager, for dire emergencies only.
- 5-D Format – 1/2 second.

TIES

In the event of a first-place tie in any segment, the winner will be determined by a run-off. Ties for other places will be handled by a coin flip for ribbons and there will be an equal division of tied prize money between tied contestants.

DIVISION OF PURSE

20% of the net purse will be paid to each of the go-rounds. 60% will be paid to the average.

DIVISION OF PURSE BY PLACE

If 50 entries or more remain eligible, 15 places will be paid as follows: 23%, 14%, 10.5%, 9%, 8%, 7%, 6%, 5%, 4%, 3.5%, 3%, 2.5%, 2%, 1.5%, 1%.



WESTERN PLEASURE & HUNTER UNDER SADDLE CONDITIONS

LIMITED DIVISION ENTRY

All entries with eligible riders will automatically be entered in the Limited Open or Limited Non-Pro divisions. No additional payments for the Limited division is required.

LIMITED DIVISION ELIGIBILITY

Western Pleasure+ Hunter Under Saddle

The top NSBA Open Western Pleasure & Hunter Under Saddle riders list will not be eligible for the Limited Open division.

- The top Non-Pro Western Pleasure riders based on NSBA Riders List will not be eligible for the Limited Non-Pro division.

Trail

- The top Open Trail riders based on NSBA Rider List will not be eligible for the Limited Non-Pro, or Open Division.

JUDGES

There will be three judges for each go-round. There will be 4 judges for the open division finals and four judges for the limited division finals, in the finals the lowest score of the four judges being eliminated for each horse.

RIDER CHANGES

- Riders must be named at the time the final payment is made.
- Due to the absolute accuracy required to maintain the ineligible rider list, rider changes must be reported to the entry office in WEC Show Office in Indoor 1 no later than 12:00pm the day before the 1st go-round.
- Any horse/rider combination shown that differs from the official class list maintained by the entry office at WEC in Indoor 1 will result in disqualification of the entry, both from the go-round and any finals for which it might have qualified.
- It is the exhibitor's responsibility to report rider changes. Please confirm riders when back numbers are received.

GO-ROUNDS AND FINALS

- There will be two go-rounds, plus a final for the Open divisions and a final for the Limited divisions. The top 15 placings in the first go-round and the second go-round of futurity classes will be eligible for the Open finals. All limited rider finalists in each go-round will be eligible for the Limited Open finals. All entries eligible for Limited divisions are eligible for Limited finals.
- A horse must have the same rider in the go-rounds and final. Any changes in rider between go-rounds and final must be approved by the show management, for dire emergencies only.

DIVISION OF REMAINING PURSE

60% of the purse will be paid to the Open division finals and 40% will be paid to the Limited Open division finals.

PAY BACK SCHEDULE

Futurity classes will follow NSBA pay back schedule.

TIES

Ties in the go-rounds and finals will be broken by a designated tie-breaker judge. The winner will be determined by final placings.

NSBA MEMBERSHIP

NSBA membership of owners and exhibitors is mandatory except Barrels, Reining or Cutting.



CHAMPIONSHIP SHOW

September 29th - October 10

Grand Arena

CLASS #	WEDNESDAY, September 29th	PRIZE MONEY		ENTRY FEE
100	Maturity Western Pleasure Open	\$35,000	1st go	\$550
101	Maturity Western Pleasure Limited Open			
102	Maturity Hunter Under Saddle Open	\$20,000	1st go	\$400
103	Maturity Hunter Under Saddle Limited Open			
104	\$10,000 Maturity Western Pleasure Horse Open	\$25,000	1st go	\$450
105	\$10,000 Maturity Western Pleasure Horse Limited Open			
106	3 Year Old Western Pleasure Futurity Open	\$50,000	1st go	\$700
107	3 Year Old Western Pleasure Futurity Limited			
108	3 Year Old Hunter Under Saddle Futurity Open	\$50,000	1st go	\$700
109	3 Year Old Hunter Under Saddle Futurity Limited Open			
CLASS #	THURSDAY, September 30th	PRIZE MONEY		ENTRY FEE
110	\$2,500 3 Year Old & Over Western Pleasure Futurity Open	\$35,000	1st go	\$550
111	\$2,500 3 Year Old & Over Western Pleasure Futurity Limited			
112	Maturity Non-Pro Western Pleasure Open	\$35,000	1st go	\$550
113	Maturity Limited Non-Pro Western Pleasure Limited			
114	\$2,500 Maturity Limited Horse Western Pleasure Open	\$25,000	1st go	\$450
115	\$2,500 Maturity Limited Horse Western Pleasure Maturity Limited			
116	3 Year Old Non-Pro Hunter Under Saddle Futurity Open	\$35,000	1st go	\$550
117	3 Year Old Non-Pro Limited Hunter Under Saddle Futurity Open Limited			
118	Maturity Non-Pro Hunter Under Saddle Open	\$20,000	1st go	\$400
119	Maturity Non-Pro Hunter Under Saddle Open Limited			
120	Senior Western Pleasure	\$5,000		\$150
CLASS #	FRIDAY, October 1st	PRIZE MONEY		ENTRY FEE
121	2 Year Old Maiden Western Pleasure Futurity Open	\$25,000	1st go	\$450
122	2 Year Old Maiden Western Pleasure Futurity Open Limited			
123	3 Year Old Non-Pro Western Pleasure Futurity Open	\$50,000	1st go	\$700
124	3 Year Old Limited Non-Pro Western Pleasure Futurity Open Limited			
125	Green Western Pleasure	\$5,000		\$150
100	Maturity Western Pleasure Open		2nd go	
101	Maturity Western Pleasure Limited			
126	Novice Youth 13 & Under Western Pleasure	\$1,000		\$75
127	Novice Youth 14 - 18 Western Pleasure	\$1,000		\$75
139	15 - 18 Horsemanship	\$2,000	1st go	\$100
128	11 & Under Western Pleasure	\$2,000		\$100
181	Non-Pro Lunge Line Western	\$2,000		\$200
130	12 - 14 Youth Western Pleasure	\$2,000		\$100



World Equestrian Center - Ocala

offers nearly 300 RV slips with full water and power service hookups.

Visitors can take advantage of the adjacent General Store to purchase food and basic amenities, as well as utilize the laundromat and fueling station.

To check availability, view rates and/or reserve an RV slip

**Ocala.wec.net/stay
866.478.9267**





We're your Golden Ocala, World Equestrian Center and Farm Specialists

When you need help selling your house and buying another, we can help. We are the leaders in sales across multiple markets in Florida and North Carolina because of our carefully selected team of top-performing Realtors®. We can also help turn your investment property into an income stream. And book sumptuous private accommodations when you travel. Or help you relocate to or from anywhere in the world. Explore all of your options with us.

4090 NW 84th Court • Ocala, Florida 34482 | 352.320.5810

RoyalShellRealEstate.com

CLASS #	SATURDAY - October 2nd	PRIZE MONEY		ENTRY FEE
131	Small Fry Western Pleasure	Toys		\$0
102	Maturity Hunter Under Saddle Open	\$20,000	2nd go	
103	Maturity Hunter Under Saddle Limited			
132	15 - 18 Youth Western Pleasure	\$2,000		\$100
106	3 Year Old Western Pleasure Futurity Open		2nd go	
107	3 Year Old Western Pleasure Futurity Limited Open			
180	Non Pro Hunter Under Saddle Lunge Line	\$2,000		\$200
134	Small Fry HMS	Toys		\$0
135	Novice Youth 13 & Under HMS	\$1,000		\$75
136	Novice Youth 14 - 18 HMS	\$1,000		\$75
137	11 & Under HMS	\$2,000		\$100
138	12 - 14 HMS	\$2,000		\$100
139	15 - 18 HMS		2nd go	
140	Junior Western Riding	\$2,000		\$100
141	Novice Youth 13 & Under Western Riding	\$500		\$50
142	Novice 14 - 18 Western Riding	\$500		\$50
143	13 & Under Western Riding	\$1,000		\$75
144	14 - 18 Western Riding	\$2,000		\$100
145	Green Western Riding	\$2,000		\$100
146	Senior Western Riding	\$2,000		\$100
CLASS #	SUNDAY, October 3rd	PRIZE MONEY		ENTRY FEE
153	Performance Halter Mares Youth	\$500		\$50
154	Performance Halter Geldings Youth	\$500		\$50
155	Small Fry Showmanship	Toys		\$0
156	Novice Youth 13 & Under Showmanship	\$500		\$50
157	Novice Youth 14 - 18 Showmanship	\$500		\$50
158	Youth 11 & Under Showmanship	\$1,000		\$100
159	12 - 14 Showmanship	\$2,000		\$100
160	15 - 18 Showmanship	\$2,000		\$100
139	15 - 18 HMS		Finals	
161	Small Fry Hunter Under Saddle	Toys		\$0
162	Novice Youth 13 & Under Hunter Under Saddle	\$500		\$50
163	Novice Youth 14 - 18 Hunter Under Saddle	\$500		\$50
164	11 & Under Hunter Under Saddle	\$2,000		\$100
165	12 - 14 Hunter Under Saddle	\$2,000		\$100
166	15 - 18 Hunter Under Saddle	\$2,000		\$100
167	Small Fry Equitation	Toys		\$0
168	Novice Youth 13 & Under Equitation	\$500		\$50
169	Novice Youth 14 - 18 Equitation	\$500		\$50
170	11 & Under Equitation	\$2,000		\$100
171	12 - 14 Equitation	\$2,000		\$100
172	15 - 18 Equitation	\$2,000		\$100

Ralph's

BURGER & SANDWICH SHOP

Classic Americana has found its place at World Equestrian Center showgrounds with a diner-inspired menu to match. Adjacent to the World Equestrian Center Stadium, expect to find sizeable burgers and loaded sandwiches sharing the plate with delicious fries. Hot dogs, wings and salads are also up

for order at Ralph's Burger & Sandwich Shop.

Throw in a milkshake, apple pie, seasonal cobbler or any of the hearty dessert options to satisfy any sweet tooth. Beverages include traditional fountain sodas, various beers and specialty drinks to wash down this incredible feast.



Photos by Maven Photo

CLASS #	MONDAY, October 4th	PRIZE MONEY	ENTRY FEE
103	Maturity Hunter Under Saddle Limited		Finals
121	2 Year Old Maiden Western Pleasure Futurity Open		2nd go
122	2 Year Old Maiden Western Pleasure Futurity Open Limited		
108	3 Year Old Hunter Under Saddle Futurity Open		2nd go
109	3 Year Old Hunter Under Saddle Futurity Limited Open		
123	3 Year Old Non-Pro Western Pleasure Futurity Open		2nd go
124	3 Year Old Non-Pro Western Pleasure Futurity Open Limited		
118	Maturity Non-Pro Hunter Under Saddle Open		2nd go
119	Maturity Non-Pro Hunter Under Saddle Open Limited		
174	\$5,000 Maturity Western Pleasure Horse Open	\$25,000	1st go \$450
175	\$5,000 Maturity Western Pleasure Horse Open Limited		
176	2 Year old Maiden Hunter Under Saddle Futurity Open	\$25,000	1st go \$450
177	2 Year old Maiden Hunter Under Saddle Futurity Limited		
178	2 Year Old Non-Pro Western Pleasure Futurity Open	\$25,000	1st go \$450
179	2 Year Old Non-Pro Western Pleasure Futurity Limited		
CLASS #	TUESDAY, October 5th	PRIZE MONEY	ENTRY FEE
178	2 Year Old Non-Pro Western Pleasure Futurity Open		2nd go
179	2 Year Old Non-Pro Western Pleasure Futurity Open Limited		
116	3 Year Old Non-Pro Hunter Under Saddle Futurity Open		2nd go
117	3 Year Old Non-Pro Hunter Under Saddle Futurity Open Limited		
176	2 Year old Maiden Hunter Under Saddle Futurity Open		2nd go
177	2 Year old Maiden Hunter Under Saddle Futurity Open Limited		
110	\$2,500 3 Year Old Novice Horse Western Pleasure Futurity Open		2nd go
111	\$2,500 3 Year Old Novice Horse Western Pleasure Futurity Limited		
174	\$5,000 Maturity Western Pleasure Horse Open		2nd go
175	\$5,000 Maturity Western Pleasure Horse Limited		
133	Open Lunge Line Western	\$2,000	\$200
129	Open Lunge Line Hunter Under Saddle	\$2,000	\$200
112	Maturity Non-Pro Western Pleasure Open		2nd go
113	Maturity Non-Pro Western Pleasure Limited		
104	\$10,000 Maturity Western Pleasure Horse Open		2nd go
105	\$10,000 Maturity Western Pleasure Horse Limited Open		
CLASS #	WEDNESDAY, October 6th	PRIZE MONEY	ENTRY FEE
113	Maturity Non-Pro Western Pleasure Limited		Finals
122	2 Year Old Maiden Western Pleasure Futurity Limited Finals		Finals
117	3 Year Old Non-Pro Hunter Under Saddle Futurity Limited Finals		Finals
115	\$2,500 Maturity Limited Horse Western Pleasure Maturity Limited Finals		Finals
124	3 Year Old Non-Pro Western Pleasure Futurity Open Limited Finals		Finals
119	Maturity Non-Pro Hunter Under Saddle Open Limited Finals		Finals
111	\$2,500 3 Year Old Limited Horse Western Pleasure Futurity Limited Finals		Finals
177	2 Year old Maiden Hunter Under Saddle Futurity Limited Finals		Finals
183	Junior Western Pleasure	\$5,000	\$150

CLASS #	THURSDAY, October 7th	PRIZE MONEY		ENTRY FEE
121	2 Year Old Maiden Western Pleasure Futurity Open		Finals	
109	3 Year Old Hunter Under Saddle Futurity Limited		Finals	
110	\$2,500 3 Year Old Limited Horse Western Pleasure Futurity Open		Finals	
105	\$10,000 Maturity Western Pleasure Horse Limited		Finals	
178	2 Year Old Non- Pro Western Pleasure Futurity Open		Finals	Run concurrently
179	2 Year Old Non-Pro Western Pleasure Futurity Limited		Finals	
101	Maturity Western Pleasure Limited Open		Finals	
177	\$5,000 Maturity Western Pleasure Horse Limited		Finals	
118	Maturity Non-Pro Hunter Under Saddle Open		Finals	
107	3 Year Old Western Pleasure Futurity Limited		Finals	
112	Maturity Non-Pro Western Pleasure		Finals	
CLASS #	FRIDAY, October 8th	PRIZE MONEY		ENTRY FEE
174	\$5,000 Maturity Western Pleasure Horse Open		Finals	
108	3 Year Old Hunter Under Saddle Futurity Open		Finals	
100	Maturity Western Pleasure Open		Finals	
176	2 Year old Maiden Hunter Under Saddle Futurity Open		Finals	
114	\$2,500 Maturity Limited Horse Western Pleasure Open		Finals	
116	3 Year Old Non-Pro Hunter Under Saddle Futurity Open		Finals	
123	3 Year Old Non-Pro Western Pleasure Futurity Open		Finals	
104	\$10,000 Maturity Western Pleasure Horse Open		Finals	
184	Novice Amateur Western Pleasure	\$1,000		\$75
185	Select Novice Amateur Western Pleasure	\$1,000		\$75

SPONSORSHIP LEVEL

DIAMOND (\$10,000+ Investment) Includes: DESIGNATED AS AN ARENA SPONSOR. Provided a complimentary golf cart, 40 complimentary restaurant vouchers, preferred stalling, digital recognition in arenas 10 times a day and daily announcements.

PLATINUM (\$5,000 – \$9,999 Investment) Includes: DESIGNATED AS FUTURITY SPONSOR, 20 complimentary restaurant vouchers, preferred stalls after Diamond Sponsors, digital recognition in Arenas six times a day, and daily announcements.

GOLD (\$2,500 – \$4,999 Investment) DESIGNATED AS A NSBA CLASS SPONSOR Includes: Preferred stalls after Platinum Sponsors, digital recognition in Arenas four times a day, and daily announcements.

SILVER (\$1,500 – \$2,499 Investment) DESIGNATED AS A CLASS SPONSOR Includes: Next best stalls assigned after Diamond, Platinum and Gold Sponsors, digital recognition in Arenas three times a day, and daily announcements.

BRONZE (\$1,000 Investment) Includes: Stalls assigned after Silver Sponsors, digital recognition in Arenas two times a day, and daily announcements.

CONTRIBUTOR (\$500 Investment) Includes: Best available stalls after all other levels of Sponsorships, digital recognition in Arenas once daily, and daily announcements.

Please reserve your stalls early by filling out the online stall and separate sponsorship forms. Only paid stalls will be considered reserved. Stalls will be assigned first to our sponsors then on a first come, first serve basis.

BECOME A SPONSOR

World Equestrian Center – Ocala offers sponsors an unparalleled opportunity to advertise their products and services, as well as interact with target demographics. We are proud to partner with several influential brands, providing numerous venue, event and media sponsorships, among other benefits.

Visit wec.net to read our Sponsor Brochure or contact Jim Wolf at jwolf@wolfsportsgroup.com or 908.391.5047 to learn more.



The Chapel

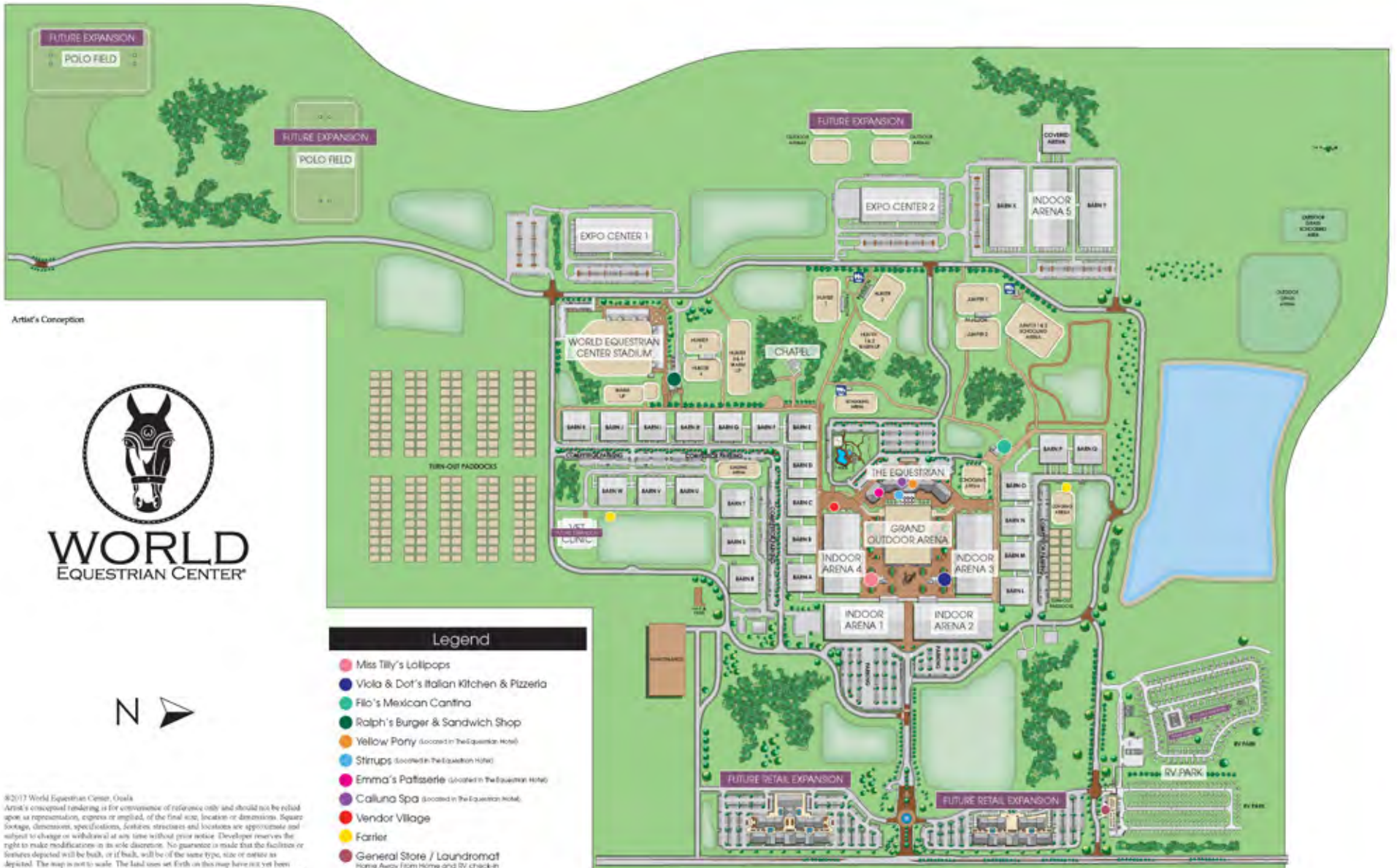
at WEC

Join us for a worship at World Equestrian Center – Ocala! Service is open to everyone. Come as you are and worship in a relaxed atmosphere with no pressure.

- Worship service
- Motivational speakers
- Come as you are – no dress code

SERVICE TIMES
Sunday | 7a.m. and 11a.m.





Artist's Conception



Legend

- Miss Tilly's Lollopops
- Viola & Dot's Italian Kitchen & Pizzeria
- Filo's Mexican Cantina
- Ralph's Burger & Sandwich Shop
- Yellow Pony (located in The Equestrian Hotel)
- Stirrups (located in The Equestrian Hotel)
- Emma's Patisserie (located in The Equestrian Hotel)
- Calluna Spa (located in The Equestrian Hotel)
- Vendor Village
- Farrier
- General Store / Laundromat
Home Away From Home and RV check-in

©2017 World Equestrian Center, Ocala
 Artist's conceptual rendering is for convenience of reference only and should not be relied upon as representation, express or implied, of the final size, location or dimensions. Square footage, dimensions, specifications, features, structures and locations are approximate and subject to change or withdrawal at any time without prior notice. Developer reserves the right to make modifications in its sole discretion. No guarantee is made that the facilities or features depicted will be built, or if built, will be of the same type, size or nature as depicted. The map is not to scale. The land uses set forth on this map have not yet been approved by the State of Florida, Marion County or other agencies with jurisdiction over the property. Changes may be made during final approval process.

HOME AWAY *from Home*

World Equestrian Center – Ocala offers visitors spacious Home Away from Home units complete with all the comforts of home. Perfect for relaxation or to unwind after a long day of showing, these units are pet-friendly and on-site near the showgrounds.

Amenities:

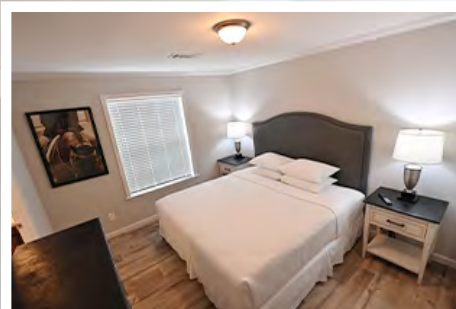
- 3 bedrooms with queen-sized beds
- Pull-out sleeper sofa
- 2 bathrooms
- 2 flat-screen TVs
- Spacious front porch with rocking chairs
- Full-sized washer and dryer
- Fully equipped kitchen with a full-size refrigerator, stove, dishwasher, microwave oven, toaster and Keurig coffee machine.

Dimensions:

- Living area 14' x 15'
- Kitchen 11' x 15'
- Master Bedroom 14' x 15'
- Master Bathroom 6' 8'
- First Bedroom 11' x 10'
- Second Bedroom 11' x 10'
- Hall Bathroom 5' x 7'

To check availability, view rates and/or reserve a golf cart

Ocala.wec.net/stay
866.478.9267



CLASS #	SATURDAY, October 9th	PRIZE MONEY	ENTRY FEE
500	Yearling Stallions Open	\$2,000	\$100
279	2 Year Old Stallions Open	\$2,000	\$100
280	3 Year Old Stallions Open	\$2,000	\$100
281	Ages Stallions Open	\$2,000	\$100
282	Performance Halter Stallions Open	\$1,000	\$75
501	Yearling Stallions Amateur	\$2,000	\$100
283	2 Year Old Amateur Stallions	\$2,000	\$100
284	3 Year Old Amateur Stallions	\$2,000	\$100
285	Amateur Aged Stallions	\$2,000	\$100
286	Performance Halter Amateur Stallions	\$1,000	\$75
502	Yearling Mares Open	\$2,000	\$100
287	2 Year Old Mares Open	\$2,000	\$100
288	3 Year Old Mares Open	\$2,000	\$100
289	Open Aged Mares	\$2,000	\$100
290	Performance Halter Mares Open	\$1,000	\$75
503	Yearling Mares Amateur	\$2,000	\$100
291	2 Year Old Amateur Mares	\$2,000	\$100
292	3 Year Old Amateur Mares	\$2,000	\$100
293	Amateur Aged Mares	\$2,000	\$100
294	Performance Halter Amateur Mares	\$1,000	\$75
504	Yearling Geldings Open	\$2,000	\$100
295	2 Year Old Gelding Open	\$2,000	\$100
296	3 Year Old Geldings Open	\$2,000	\$100
297	Open Aged Geldings	\$2,000	\$100
298	Performance Halter Geldings Open	\$1,000	\$75
505	Yearling Geldings Amateur	\$2,000	\$100
299	2 Year Old Amateur Geldings	\$2,000	\$100
300	3 Year old Amateur Geldings	\$2,000	\$100
301	Amateur Aged Geldings	\$2,000	\$100
302	Performance Halter Amateur Geldings	\$1,000	\$75
506	Yearling Mares Youth	\$2,000	\$100
303	2 Year Old Youth Mares	\$2,000	\$100
304	3 Year Old Youth Mares	\$2,000	\$100
305	Youth Aged Mares	\$2,000	\$100
507	Yearling Geldings Youth	\$2,000	\$100
306	2 Year Old Youth Geldings	\$2,000	\$100
307	3 Year old Youth Geldings	\$2,000	\$100
308	Youth Aged Geldings	\$2,000	\$100

Grand Champion = \$2,000. Reserve Champion = \$1,000



Miss Tilly has made her home close to the Grand Outdoor Arena, serving up equally grand sweet treats and desserts. Find a favorite ice cream or go all out with an elegant sundae. Miss Tilly's Lollipops also brings snow cones, smoothies and cotton

candy to the showgrounds, many with unique, tasty flavors. For cookie and brownie lovers, expect to see a fine selection of sumptuous confections on the Miss Tilly's menu.





Close to The Equestrian Hotel and not far from a schooling arena, Filo's Mexican Cantina treats visitors to both in-house dining and an open-air patio. Numerous burritos, fajitas, quesadillas and top-notch street tacos are well at home among this restaurant's vibrant display. Start a meal with some nachos or queso fundido and end with tres leche or flan mexicano.

The "build-your-own-salad" option makes for an excellent option to mix fresh vegetables with traditional Mexican ingredients. Add some sides to enhance the already incredible flavors and order a Mexican Coke to complete the ensemble.



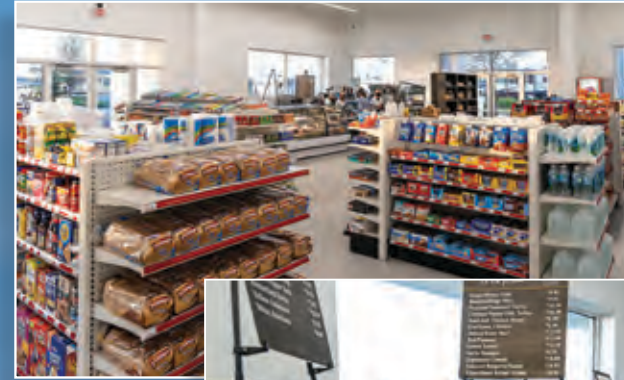
CLASS #	SATURDAY, October 9th	PRIZE MONEY	ENTRY FEE
186	Novice Amateur Showmanship	\$1,000	\$75
187	Novice Select Showmanship	\$1,000	\$75
188	Amatuer Showmanship	\$2,000	\$100
189	Select Showmanship	\$2,000	\$100
102	Maturity Hunter Under Saddle Open		Finals
106	3 Year Old Western Pleasure Futurity Open		Finals
190	Green Hunter Under Saddle	\$5,000	\$150
191	Senior Hunter Under Saddle	\$5,000	\$150
192	Amateur Western Pleasure	\$5,000	\$150
193	Select Western Pleasure	\$5,000	\$150
194	Novice Amateur Horsemanship	\$1,000	\$75
195	Novice Select Amateur Horsemanship	\$1,000	\$75
196	Amatuer Horsemanship	\$2,000	\$150
197	Select Amateur Horsemanship	\$2,000	\$150
198	Novice Amateur Western Riding	\$500	\$50
199	Novice Select Western Riding	\$500	\$50
200	Amateur Western Riding	\$2,000	\$100
201	Select Western Riding	\$2,000	\$100
CLASS #	SUNDAY, October 10th	PRIZE MONEY	ENTRY FEE
202	Junior Hunter Under Saddle	\$5,000	\$150
203	Novice Amateur Hunter Under Saddle	\$500	\$50
204	Novice Select Hunter Under Saddle	\$500	\$50
205	Amateur Hunter Under Saddle	\$5,000	\$250
206	Select Hunter Under Saddle	\$5,000	\$250
207	Novice Amateur Equitation	\$500	\$50
208	Novice Select Equitation	\$500	\$50
209	Amateur Equitation	\$2,000	\$100
210	Select Equitation	\$2,000	\$100

WORLD EQUESTRIAN CENTER®
OCALA, FL

GENERAL STORE



Located adjacent to the RV Park, The General Store is a one-stop shop for food and beverages, including Star-buck's coffee and a Boar's Head delicatessen case. Deli sandwiches, baked goods and other packaged foods are also among the selection. Guests may rent golf carts or utilize the laundromat and fuel services at this facility.



CHAMPIONSHIP SHOW
 October 1st - 4th
Arena 2

CLASS #	FRIDAY, October 1st		ENTRY FEE
213	Junior Trail Stakes	\$25,000	\$300
214	Small Fry Trail	Toys	\$0
215	Novice Youth 13 & Under Trail	\$1,000	\$100
216	Novice Youth 14 - 18 Trail	\$1,000	\$75
217	Youth 11 & Under Trail	\$2,000	\$75
218	Green Trail Stakes	\$25,000	\$300
CLASS #	SATURDAY - October 2nd		ENTRY FEE
219	4 & 5 Year Old Trail Open Stakes	\$10,000	\$250
220	12 - 14 Youth Trail	\$2,000	\$100
221	4 & 5 Year Old Non-Pro Trail Stakes	\$10,000	\$250
222	15 - 18 Youth Trail	\$2,000	\$100
CLASS #	SUNDAY, October 3rd		ENTRY FEE
223	3 Year Old Trail Open Stakes	\$15,000	\$275
224	Novice Amateur Trail	\$1,000	\$75
225	3 Year Old Non-Pro Trail Stakes	\$10,000	\$250
226	Novice Select Trail	\$1,000	\$75
227	Amateur Trail	\$5,000	\$150
228	Select Trail	\$5,000	\$150
CLASS #	MONDAY, October 4th		ENTRY FEE
229	Senior Trail Stakes	\$25,000	\$300

STIRRUPS

RESTAURANT 

The pinnacle of World Equestrian Center fine dining, Stirrups is located on the ground floor of The Equestrian Hotel. This upscale experience comes complete with slip-covered white chairs, a mahogany wine bar and chef's table for private dining. Diners may also enjoy the outdoor VIP terrace overlooking the Grand Outdoor Arena and witness thrilling equestrian sport.

Specialties include locally sourced seafood, fresh from the Florida coast, with equally tantalizing steak and tenderloin dishes. Various soups, salads and sandwiches are among this restaurant's other offerings,

including in-house baked goods from Emma's Patisserie. Stirrups offers several menus matching the meal of the hour, as well as a dedicated menu catering to the vegetarian palate.

The associated wine cellar features 250-300 distinct labels, culminating in a near 1500 bottle selection. With a focus on American wines, guests may indulge on California, Oregon and Washington state's finest. Hotel sommeliers are also seeking out wineries and producers with equestrian connections, adding more variety and interest to the selection.



CHAMPIONSHIP SHOW

October 8th - 10th

Arena 5

CLASS #	FRIDAY, October 8th		ENTRY FEE
230	Green Ranch Riding Stakes	\$10,000	\$250
231	Novice Amateur Ranch Riding	\$1,000	\$75
232	Novice Select Ranch Riding	\$1,000	\$75
233	Amateur Ranch Riding	\$2,000	\$100
234	Select Amateur Ranch Riding	\$2,000	\$100
235	Novice Amateur Ranch Rail	\$1,000	\$75
236	Novice Select Ranch Rail	\$1,000	\$75
CLASS #	SATURDAY, October 9th		ENTRY FEE
241	Junior Ranch Riding	\$10,000	\$250
242	Novice Youth Ranch Riding	\$2,000	\$100
243	13 & Under Ranch Riding	\$2,000	\$100
244	14 - 18 Ranch Riding	\$2,000	\$100
245	Novice Youth Ranch Rail	\$2,000	\$100
246	13 & Under Ranch Rail	\$2,000	\$100
247	14 - 18 Ranch Rail	\$2,000	\$100
CLASS #	SUNDAY, October 10th		ENTRY FEE
252	Senior Ranch Riding	\$10,000	\$250
253	Amateur Ranch Rail	\$2,000	\$100
254	Select Amateur Ranch Rail	\$2,000	\$100
255	Open Ranch Rail	\$5,000	\$150



Create a one-of-a-kind piada, pasta or salad with Viola & Dot's largely customizable menu selections. Customers can choose a base for their item, then, pick from a list of protein or vegetable options. Finally, a full host of vegetables, cheeses, dressings and sauces make up the variable toppings, each available to adorn a piada, pasta or salad.

Many calzones and pizzas complement the already impressive dishes on the menu. Classic entrees, such as lasagna or the famed spaghetti & meatballs may also be found on at Viola & Dot's Italian Kitchen & Pizzeria. Whatever the order, consider reserving some Italian-inspired tiramisu or panna cotta to polish off a meal.



CHAMPIONSHIP SHOW

September 29th - October 10th

Outside - Hunter 3 & 4

CLASS #	FRIDAY, October 1st			ENTRY FEE
257	Junior Working Hunter		\$2,000	\$200
258	Senior Working Hunter		\$2,000	\$200
259	Progressive Working Hunter		\$2,000	\$200
CLASS #	SATURDAY - October 2nd			ENTRY FEE
260	Green Working Hunter		\$1,000	\$150
261	Novice Youth Working Hunter		\$500	\$100
262	Novice Amateur Working Hunter		\$500	\$100
263	Youth Working Hunter		\$1,000	\$150
264	Amateur Working Hunter		\$1,000	\$150
265	Select Working Hunter		\$1,000	\$150
266	Novice Youth Equitation Over Fences		\$500	\$50
267	Novice Amateur Equitation Over Fences		\$500	\$50
268	Youth Equitation Over Fences		\$500	\$50
269	Amateur Equitation Over Fences		\$500	\$50
270	Select Equitation Over Fences		\$500	\$50
271	Hunter Derby (Derby Field)		\$5,000	\$250
CLASS #	SUNDAY, October 3rd			ENTRY FEE
272	Novice Youth Hunter Hack		\$500	\$50
273	Novice Amateur Hunter Hack		\$500	\$50
274	Youth Amateur Hunter Hack		\$500	\$50
275	Amateur Hunter Hack		\$1,000	\$150
276	Select Hunter Hack		\$1,000	\$150
277	Junior Hunter Hack		\$2,000	\$200
278	Senior Hunter Hack		\$2,000	\$200

THE CHAMPIONSHIP SHOW

BARREL FUTURITY & SWEESTAKES - October 21st - 23rd, 2021

Arena 5

CLASS #	THURSDAY, October 21st			ENTRY FEE
341	Barrel Futurity	\$25,000	1st go	\$350
CLASS #	FRIDAY, October 22nd			ENTRY FEE
342	5-D Barrel Sweepstakes Open	\$20,000		\$250
CLASS #	SATURDAY, October 23rd			ENTRY FEE
343	Barrel Futurity		2nd go	
344	5D Youth Barrel Race	\$10,000		\$200
345	5 D Barrel Sweepstakes +\$25,000 Future Fortunes	\$10,000		\$200

Barrel Futurity will be 2 go-rounds with 30% paid to go-round winners and 40% to composite winners.
All other classes are 1-go format.



Emma's Patisserie boasts much of the freshly made pastries found in the restaurants throughout World Equestrian Center – Ocala. Located in The Equestrian Hotel, the specially-designed storefront takes its inspiration from a true French bakery, with quality food to match. Drop in to savor the exquisite display of bonbons, croissants and kouign amann.

Perhaps the hallmark of Emma's Patisserie is its variety of authentic French macarons, available in several flavors. American-inspired pastries also line the shelves, namely cinnamon rolls and sticky buns, along with many donuts and coffee options. Numerous sandwiches, salads and wraps represent the fare found in the bakery's grab-and-go section.



WIN A TRUCK!



Horsemanship Challenge

October 1 – 3, 2021

Youth 15 – 18

There will be two go-rounds with a Finals.
The top 20 finalists from the average
of the two go-rounds will be
competing for a **2021 GMC Truck**.

Trainer bonus of
\$5,000 to the winning Trainer.

THE CHAMPIONSHIP SHOW REINING SHOW - October 8th - October 10th, 2021

Arena 5

CLASS #	FRIDAY, October 8th		JUDGE FEE	ENTRY FEE
NRHA-1	Green Reiner Level 2	Jackpot	\$20	\$20
NRHA-2	Novice Horse Level 1 Open	\$1,000	\$50	\$100
NRHA-3	Novice Horse Level 2 Open	\$1,000	\$50	\$100
	Classes 2 & 3 run concurrently			
NRHA-4	Novice Horse Non-Pro Level 1	\$1,000	\$50	\$100
NRHA-5	Novice Horse Non-Pro Level 2	\$1,000	\$50	\$100
	Classes 4 & 5 run concurrently			
NRHA-6	Free Style Reining Non-Pro	\$10,000	\$75	\$200
CLASS #	SATURDAY, October 9th		JUDGE FEE	ENTRY FEE
NRHA-7	Open Reining	\$3,000	\$75	\$300
NRHA-8	Intermediate Open Reining	\$1,000	\$50	\$100
NRHA-9	Limited Open Reining	\$500	\$50	\$100
	Classes 7, 8 & 9 run concurrently			
NRHA-10	Rookie Level 1	Jackpot	\$20	\$20
NRHA-11	Rookie Level 2	Jackpot	\$20	\$20
NRHA-12	Prime Time Rookie	Jackpot	\$20	\$20
NRHA-13	Free Style Reining Open	\$10,000	\$75	\$200
CLASS #	SUNDAY, October 10th		JUDGE FEE	ENTRY FEE
NRHA-14	Youth 10 & Under Short Stirrup	\$100	\$0	\$10
NRHA-15	Youth 13 & Under Reining	\$100	\$0	\$10
NRHA-16	Youth 14 - 18 Reining	\$100	\$0	\$10
NRHA-17	Non-Pro Reining	\$3,000	\$75	\$300
NRHA-18	Non-Pro Intermediate Reining	\$1,000	\$50	\$100
NRHA-19	Non-Pro Limited Reining	\$200	\$20	\$20
NRHA-20	Prime Time Non-Pro	\$500	\$35	\$50

PROUDLY OFFERING

All-Around Awards



Youth 11 & Under	\$2,000
Youth 12 - 14	\$2,000
Youth 15 - 18	\$2,000
Amateur	\$2,000
Select Amateur	\$2,000
Junior Horse	\$2,000
Senior Horse	\$2,000

Must show in Performance Halter for all-around awards.



THANK YOU

FOR YOUR SUPPORT

World Equestrian Center provides a truly unique equestrian experience to our customers and the equestrian-focused customers of our sponsors. We are proud to partner with the following companies that support equestrian sport:

FOUNDING PARTNERS



PARTNERS

CaptiveOne | ADVISORS®

SPONSORS





WORLD
EQUESTRIAN CENTER
OCALA, FL

wec.net/ocala