

WORLD EQUESTRIAN CENTER®

Winter

IN THE
MIDWEST ²²

NSBA SHOW DATES

2021

WEC Winter 1	12/1 - 12/5
WEC Winter 2	12/8 - 12/12
WEC Winter 3	12/15 - 12/19

2022

WEC Winter 5	1/12 - 1/16
WEC Winter 6	1/19 - 1/23
WEC Winter 10	2/16 - 2/20
WEC Winter 12	3/2 - 3/6
WEC Winter 13	3/9 - 3/13
WEC Winter 14	3/16 - 3/20
WEC Winter 15	3/23 - 3/27
WEC Winter 16	3/30 - 4/3
WEC Winter 17	4/6 - 4/10
WEC Winter 18	4/13 - 4/17

USEF SHOW DATES*

USEF Premier/Level 4

WEC Winter 4	1/5 - 1/9
WEC Winter 7	1/26 - 1/30
WEC Winter 8	2/2 - 2/6
WEC Winter 9	2/9 - 2/13
WEC Winter 11	2/23 - 2/27

*See USEF Prize List



January 5 - 9

PERFECT INDOOR CONDITIONS
← ALL YEAR →



Quality. Class. Distinction.®

Wilmington, Ohio • wec.net   



As the World Equestrian Center approaches completion,
it's time to claim your prize.
Secure your place now. Custom estate homes for sale. Stables for lease.



GOLDEN OCALA
• GOLF & EQUESTRIAN CLUB •



WORLD
EQUESTRIAN CENTER
OCALA, FL

GoldenOcala.com | 855-80-OCALA



GOLF | TENNIS | EQUESTRIAN | FITNESS | POOL | SPA | DINING | EVENTS

HORSE SHOW OFFICIALS



HORSE SHOW STAFF

Competition Mgmt (CEO)

Arena Horse Shows LLC

Manager

TJ Campbell | 352.857.4572

Horse Show Secretary

Julie Agar

julie.agar@wec.net | 937.556.2208

Office Staff

Derek Schlaud

Stabling Manager

stallreservations@wec.net |

937.556.8438

Marketing and PR

Candace FitzGerald

603.738.2788

Candace.FitzGerald@wec.net

Announcers

Daniel McCarthy

Gary Sylvester

Tony Epperson

Starters

Nik Epperson

Dave Shepard

Padriac Cutright

Footing Supervisor

Christian Duderstadt

Roy Coyle

Photographer

Winslow Photography

jwinslowphoto@gmail.com

614.634.2843

EMT Services

WEC Medical Staff

Show Veterinarian

Holly Helbig, DVM | 330.807.2643

Farrier

Farriers Inc. | 937.481.4198

Awards

Barb Pugerud

Erika Walker

SHOW APPROVALS

National Snaffle Bit Association (NSBA)

Indiana Hunter Jumper Association (IHJA)

Illinois Hunter Jumper Association (IHJA)

Ohio Professional Horsemen's Association (OPHA)

Wisconsin Hunter Jumper Association (WHJA)

Western Pennsylvania Professional Horseman's Assn (WPAPHA)

Check Organization Website for Actual Dates They Recognize



HORSE SHOW INFO

Entry Questions to:

Julie.Agar@wec.net, wec.net

Online Entry and Horse Show

Information website:

HorseShowing.com

Contact/Mailing Information During the Show:

World Equestrian Center

Horse Show Office

4095 SR 730 Wilmington, OH 45177

Julie.Agar@wec.net

937.556.2208

NATIONAL SNAFFLE BIT ASSOCIATION "NSBA" MEMBERSHIP

All Horses and People named on an entry must be current members of NSBA. Junior (Youth) membership is \$35, Adults are \$65 for the first member of the household and \$35 for each additional member of the same household.

Horse RECORDING is \$35 for life. All memberships should be completed online at www.nsba.com. All ponies must hold a permanent measurement card in NSBA, NGB, or be measured at the show. All Amateur riders must possess an amateur card with NSBA, NGB, or complete a Non Pro Declaration form per rule 64 of the NSBA Rulebook (available at NSBA.com)

CLOSING DATES

Stall counts must be finalized 28 days prior to the show. Tack stalls do not need to be prepaid. After the closing date stalls are not refundable and there is no guarantee we will be able to accommodate additional reservations.

Complete your entries online at:
HorseShowing.com

If you are mailing an entry it must be received no later than 14 days before the show to avoid late fee. **Online entries must be submitted by the Friday before the show to avoid late fees.** There is no penalty for adding classes or changing horses (same owner) at the show. Please Mail Entries and Stall Checks payable to Arena Horse Shows LLC, to:

World Equestrian Center Horse Show

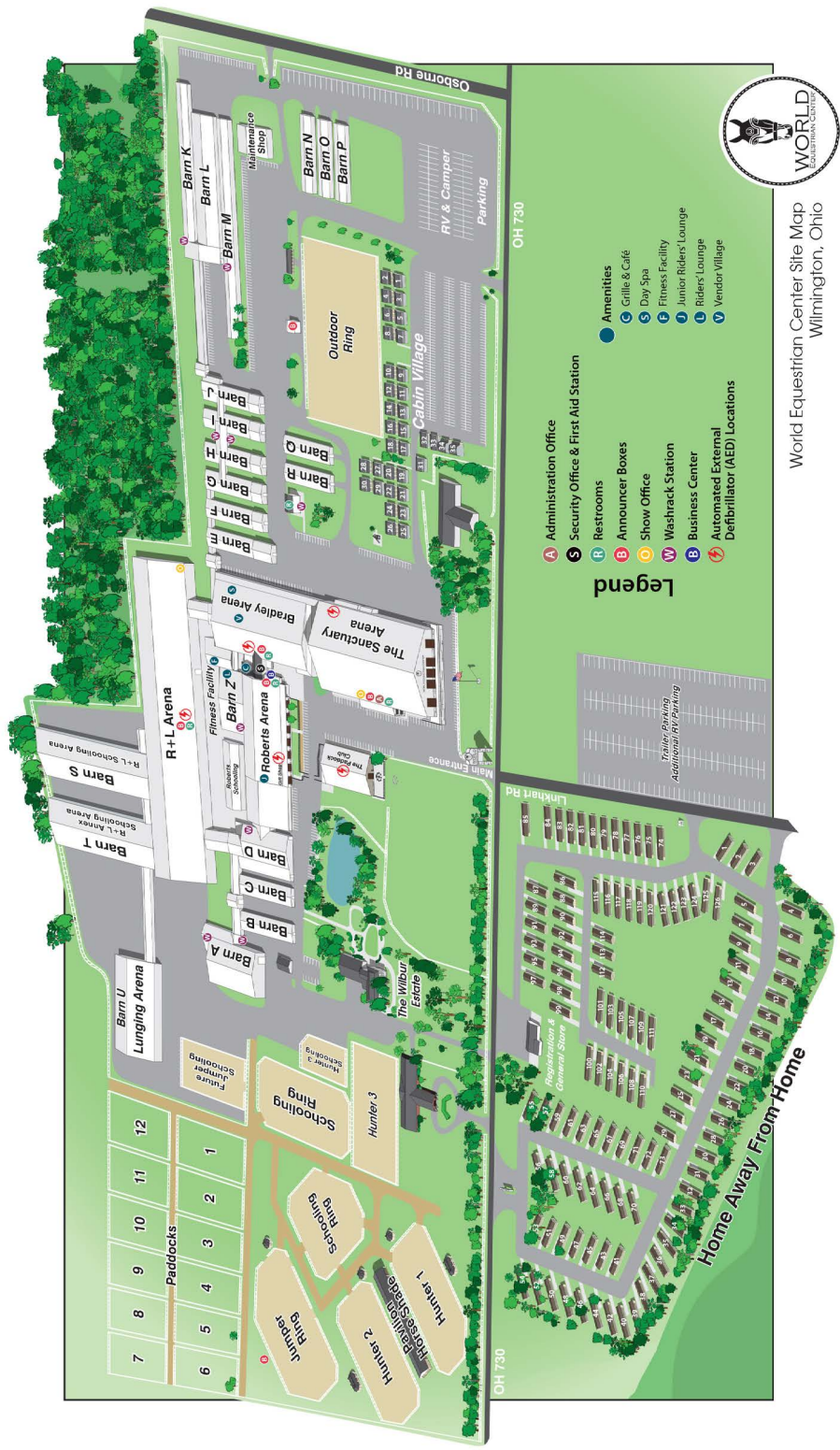
Attn: Julie Agar

2018 N. SR 134

Wilmington, OH 45177



World Equestrian Center Site Map
Wilmington, Ohio



CONDITIONS OF ENTRY

Attention Exhibitors: The horse shows set forth in the Prize List will be held under the rules and governance of the sanctioning body of the National Snaffle Bit Association ("NSBA"). The NSBA rules are available on their website www.nsba.com and NSBA will oversee all equine and human anti-doping testing via the University of Kentucky's Equine Analytical Chemistry Laboratory in Lexington, Kentucky. Prohibited substances shall include all substances prohibited by the National Federation, International Federation and the World Anti-Doping Agency ("WADA"). Any person, horse, trainer or owner banned or suspended by a National or International organization (for any rule violation, including, for the avoidance of doubt, any anti-doping violation, or breach of the SafeSport Code) shall also be banned by the NSBA for the same period ("Reciprocity Policy"). However, we will not honor a suspension put in place by another organization that is in place solely as a result of competition at one of our unrated events. In addition, the NSBA shall enforce its own violations and maintain its own suspended and banned lists. All NSBA shows held at the World Equestrian Center meet or exceed all horse and athlete welfare standards and competition integrity standards.

Safe Sport: The World Equestrian Center and the NSBA will comply with all requirements for amateur sport as set forth in the Ted Stevens Olympic and Amateur Sports Act and will refer all complaints to the United States Center for Safe Sport for independent investigation. The World Equestrian Center shall uphold standards equal to those set forth in the Equestrian NGB's Safe Sport Policy. The World Equestrian Center shall give full reciprocity to any sanctions imposed by the US Center for Safe Sport that are published on the Centralized Disciplinary Database.

The Horse Show Management reserves the right to limit entries, refuse, accept conditionally, or to cancel any entries, disqualify any riders or exhibitors, prohibit exhibition of entries, and cancel award prizes, without claim for damages; to change any course, to add a dotted line, to cancel or combine any classes, or to reschedule classes, after due notice to exhibitors; to change rings or judges; to change specifications in jumper classes in order to facilitate the time schedule or as competition warrants, or make any changes management deems is in the best interest of the show and its exhibitors.

Every horse entered for competition will be under the control of the Horse Show Management, but Management will, in no case, be responsible for any loss or damage that may occur, and it shall be a condition of entry that each exhibitor shall hold the Horse Show, its members, directors and employees, contractors, sponsoring entities and facility harmless for any loss or accident to horse, horses or equipment which may occur from sickness, fire or otherwise.

Office Hours: classes at 5pm daily OR 30 minutes after the last class finishes, whichever comes FIRST. Adds for the next day must be completed before the office closes.

24 hour Security: 937.382.7878

Stabling: Most stalls are permanent wood construction with rubber mats, 10' x 12' with doors, some may be 10' x 10' with doors.

Stall Reservations: Stalls for Showing horses \$175 and must be ordered and prepaid online at horseshowing.com. Tack stalls and non showing horse stalls are \$250 and must be ordered on horseshowing.com, tack stalls can be split at the show. Stalls will not be confirmed without required deposit. Canceled stalls will not be refunded for any reason if cancelled inside of 28 days before the show. Stalls can be ordered on HorseShowing.com until sold out, you will need to have a free account. Be sure to use the STALLS/FEED AND BEDDING option, this feature will be turned off when the available supply is exhausted. Stalls are not available on entries. To be added to the wait list for sold out shows please email stalls@wec.net.

Campers: Reserve your camper spots online at HorseShowing.com with your stall reservations. Full service spots \$225 per show.

Feed and Bedding: Should be ordered online one week before your arrival thru your horseshowing.com account. Late orders can be emailed to stalls@wec.net for next day delivery. Additional feed and bedding during the show must be ordered in the show office on the official delivery form.

Feed and Bedding: Should be ordered online by Friday before your arrival thru your horseshowing.com account. Late orders can be emailed to stalls@wec.net for next day delivery. Additional feed and bedding during the show must be ordered in the show office on the official delivery form.

Grounds Fee: All horses must have a stall, we do not allow ship-ins.

***Entry Closing:** The entry closing date for mailed entries is received 14 days before the first day of the show, or the Friday before the show for online entries submitted at HorseShowing.com. Entries must be received by this date to be considered on time. Entries completed ONLINE at HorseShowing.com will not be charged a late fee until the Saturday before the show. Late fee is \$50 after the closing date and \$75 if received after 12 noon the day before the show starts.

Processing/EMT/Night Watch/Schooling Fee: Each horse will pay a \$50 per show Processing Fee, \$25 EMT Fee, \$18 Night Watch Fee and \$20 Schooling Fee. The Processing Fee is a non-refundable fee will also entitle each horse to properly add/scratch regular classes at no additional cost.

Arrival and Departure: Horses may arrive after 3pm on Monday and depart no later than 7am Monday. Early arrival and late departure must be arranged directly with the stabling manager.

IMPORTANT INFORMATION CONCERNING SPLITTING/COMBINING & ADD/SCRATCH POLICY IN ALL Conformation, High Performance, Green, Junior, Amateur, Pony, and Green Pony sections – Should entries warrant, these hunter sections will be split or combined at the close of the horse show office on the evening preceding the first class is each section, therefore entries MUST be completed in these hunter divisions accordingly to be considered. Any post-adds received and accepted after this time will not be considered in respect to the splitting/ combining numbers. **There will be no exceptions to this policy. Same day scratches and/or “no-shows” at the gate in these hunter sections will forfeit their entry fee unless a Certificate from the Official Show Veterinarian vet scratch for the show is received by the official show secretary prior to the First class of the section in question. Should same day scratches or no-shows result in insufficient entries to keep sections split, sections will be combined.**

Adding Classes: PLEASE make an effort to add all classes for the entire week, we are very scratch friendly. It helps management plan for more comfortable days if they have an idea of the class counts. Adding can be done directly in your HorseShowing.com account until 5pm the day before the class is scheduled, after this deadline same day adds may not be allowed.

Scratching Classes: Can be done directly in your HorseShowing.com any time until the start of the class except Conformation, High Performance, Green, Junior, Amateur, Pony, and Green Pony sections cannot scratch same day. Same day scratches and/or “no-shows” at the gate in these hunter sections will forfeit their entry fee unless a Certificate from the Official Show Veterinarian vet scratch for the show is received by the official show secretary prior to the First class of the section in question. Informing the starter that you do not intend to participate WILL NOT give you credit for any class. Horses on the grounds scratching all classes will become a non-showing horse regardless of the reason and will incur all fees associated with a non-showing horse.

Protective Headgear: It is compulsory for *all persons at hunter/jumper competitions when mounted anywhere on the competition grounds, to wear properly fastened protective headgear which meets or exceeds ASTM (American Society for Testing and Materials)/SEI (Safety Equipment Institute) standards for equestrian use and carries the SEI tag. It must be properly fitted with harness secured.* It is the responsibility of the rider, or the parent, guardian or trainer of the junior exhibitor to see to it that the headgear worn complies with appropriate safety standards and is properly fitted and in good condition.

Horse Show Championships: In all Hunter Championships, the titles shall be awarded to two of the four horses which have acquired the most points over fences. In addition to these points, only these four horses shall receive full points for ribbons won in Under Saddle classes and half points for ribbons won in Model. Equitation Championships shall be equal points with ties broken by points over fences. Points awarded for all divisions as follows: 10-6-4-2-1-1/2 except Jumper bonus classes. Hunter ties shall be decided by points over fences. Ties in Jumper divisions to be decided by the bonus class placing, if still tied they shall remain tied and entries shall flip/draw for the awards.

Checking In and Checking Out: All horses must leave a check or credit card on file. All accounts must be settled EVERY WEEK, in full, upon the conclusion of the final class on Sunday. Those that do not check out will be charged a \$50 late check out fee. If you would like us to check you out please see us on Sunday and approve your statement and we will check you out at the conclusion of your classes. You are responsible for accuracy of your invoice and changes will not be made after the conclusion of the show. For your convenience there will be exhibitor's terminals available 24 hours a day in the show office lobby; we encourage you to look at your account early in the week and make any corrections while the office is quiet. You can check out with your credit card at the exhibitors terminal or online by request to the show office by emailing ohcheckout@wec.net

Non-Showing Horses: All horses on the grounds are required to have a signed entry form in the office, whether they are showing or not. This entry form must include signatures and a complete description of the horse. Non-Showing horses will pay a fee of \$150 per show plus \$18 night watch. To be considered a showing horse the horse must be on the judges card for a minimum of 3 classes over fences or \$150 of entry fees. **Scratched horses on the grounds are considered non-showing horses regardless of the reason.**

Payment Method: Show Fees/bedding/feed may be paid by cash, check drawn on an American bank, or any major credit card (@3% fee). Enough checks to cover all weeks or a credit card must be left in the office upon arrival and back number pick up.

Returned Checks/Declined Credit cards/Credit card chargebacks: Checks returned by the bank or declined/chargebacks on credit cards transactions for any reason are regarded as a most serious offense and will be handled as follows: A 10% Penalty will be assessed for every returned check or credit card chargeback (Minimum of \$50). Accounts will be given ten days to be paid in full with cash or cash equivalent or they will be reported to Proper Authorities for collection/disciplinary action.

Prize Money/Awards: An IRS/W9 needs to be completed showing the proper prize money recipient and their SS or FED ID# at EVERY show. Care must be taken to be sure the information matches that of the IRS. Prize money will be deducted from your account upon closeout in the office provided you have submitted the required W9 or W8 for Foreign exhibitors at the show. Balances will be paid in the form of a check mailed to the named recipient on the W9 within 30 days after the conclusion of the show. Any prize money not claimed by the end of the fiscal year will be forfeited. The IRS W9 form is available in the show office. All Hunter purses shall be divided as follows unless otherwise specified: 1st-30% / 2nd-22% / 3rd-15% / 4th-12% / 5th-11% / 6th-10%.

Refunds: Entries canceled prior to the closing date will be refunded in full. Stalls and processing fee are not refundable for any reason after the closing date. All entry scratches must be submitted in writing to be considered for a refund. All accounts become final after the close of the show, changes will not be considered after this date, no exceptions! Please look over your statement carefully before checking out. If the show must be stopped due to a storm, accident, or other emergency, the show management has the right to deny a refund of any or all fees.

Health Requirements: WEC regulations require that all equines be covered by official interstate health certificates, issued by a licensed veterinarian, showing that the animals are free from any symptoms of any infectious or communicable disease. Health certificates must show animals to be negative to an equine infectious anemia test within the past 12 months. Date of test and approved laboratory must be shown on health certificate. Horses entering the grounds must be accompanied by documentation of Equine Influenza Virus and Equine Herpes Virus (Rhinopneumonitis) vaccinations within six months prior to entering the facility. Horses not in compliance with this rule may be required to leave the competition grounds upon request by Competition Management. Documentation should consist of one of the following methods mentioned below. The frequency of vaccine administration should be per the vaccine manufacturers' or veterinarian's recommendations. It is recommended that vaccines be administered by or under the direction of a veterinarian. 2. In the case of vaccines administered by a veterinarian, the exhibitor, upon request by Competition Management, must provide documentation from the veterinarian on documenting that the horse in question received the vaccinations; name of the vaccines and date of vaccine administration. 3. In the case of vaccines administered by a person other than a veterinarian, the exhibitor, upon request by Competition Management, must provide a receipt of the vaccine purchase which is signed by the owner, or agent with care, custody, and control of the horse; name, serial number and expiration date of the vaccine; and date of vaccine administration. 4. In the case of a horse that is unable to receive either of the vaccinations due to a history of adverse reactions, the exhibitor, upon request by Competition Management, must provide a letter from the veterinarian on official letterhead stating that the horse in question cannot be vaccinated due to medical concerns and a log of temperatures taken twice daily for the seven days prior to entering the competition grounds. These horses must also have their temperature taken and logged twice daily while on the competition grounds. The log of temperatures should be provided to the Competition Management, steward, or technical delegate when requested. 5. Competition Management may not amend or enhance vaccination requirements without prior approval of the Veterinary Committee.

Rings: Roberts is 110' x 266', R & L Ring is 130' x 615', Outdoor Arena 150' x 300', Sanctuary 170' x 325'. GGT Mix.

Courtesy Circle: In some instances it may become necessary to restrict the area of the courtesy circle by a mandatory line. If this is implemented it will be clearly marked on the course chart and a corresponding barrier will be erected on the course. A public announcement will also be made.

Motorized Vehicles: May be used outside the buildings on designated paths. Minors who do not have a valid driver's license which allows them to operate a motorized vehicle in the state in which they reside will not be permitted to operate a motorized vehicle of any kind, including, but not limited to, golf carts, motorcycles, scooters, or farm utility vehicles, on the competition grounds of licensed competitions. Minors who have a valid temporary license may operate the above described motorized vehicles as long as they are accompanied by an adult with a valid driver's license. The parent/legal guardian or individual who signs the entry blank as a parent or guardian of a minor operating a motorized vehicle in violation of this rule are solely responsible for any damages, claims, losses or actions resulting from that operation. Violations of this rule will be cause for penalties against those responsible for the child committing the offense. Wheelchairs and other mobility assistance devices for individuals with disabilities are exempt from this rule.

Dogs: Leash Law: Dogs and other pets must be on a leash at all times while on the show grounds.

RDNE (Rode Did Not Enter): Entries that show in a class that was not properly entered either online, by inclusion on your original entry form, or a properly filled out add slip PRIOR to the class involved will be charged a \$25 RDNE Fee, and you will not be considered for an award in that class. This charge will show on your statement as "entered off judge's card". All adds must be done in the office by 5:00 P.M. the day before the class in question to assure acceptance.

Medical Waste: Sharps must be placed in proper receptacles located in each barn. Failure to do this will result in a \$100 fine or other penalties deemed necessary by the show management.

Poling: Manual poling and the use of bamboo offsets are prohibited at all times on the grounds of the World Equestrian Center. In the event of a violation of this rule, the involved horse and its trainer of record as indicated on the entry form will be suspended from further competition at the show in which the violation occurred. In addition, no refunds will be given for any unused fees.

Checking In and Checking Out: All horses must leave a check or credit card on file. All accounts must be settled EVERY WEEK, in full, upon the conclusion of the final class on Sunday. Those that do not check out or leave an open check with the office will be charged a \$50 late check out fee.

For your convenience there will be exhibitor's terminals available in the show office; we encourage you to look at your account early in the week and make any corrections while the office is quiet. If you wish us to fill in your check for you, we will be happy to. Please print your statement at the exhibitor's terminal and write on it "please close out my check" and drop the statement in our basket; this will expedite your departure. If you are checking out more than one horse be sure to include a statement for each horse and explicit instructions as to whose check we use for which horses. Remember to print two copies, one for us and one for you! Please look over the information on your statement and report any errors to a secretary immediately as to horse's name, riders, owners, addresses, association numbers, etc., so we may accurately report your results to the various organizations.





Bedding Pellets

Official Pellet Provider for
WORLD EQUESTRIAN CENTER®

Energy Pellets of America bedding pellets are a healthy and comfortable solution for your animal's bedding needs. Our pellets are highly absorbent and will create drier, cleaner, and healthier habitats.

Benefits of Bedding Pellets:

- Highly Absorbent
- Saves Time
- Reduced Odors
- Low Dust
- Minimize Waste
- Reduced Storage Space
- Easy to Sift
- And More!

CONTACT US FOR MORE INFORMATION!

(513) 909 4552 • @energypelletsofamerica

2483 U.S. 22 West, Wilmington, OH 45177

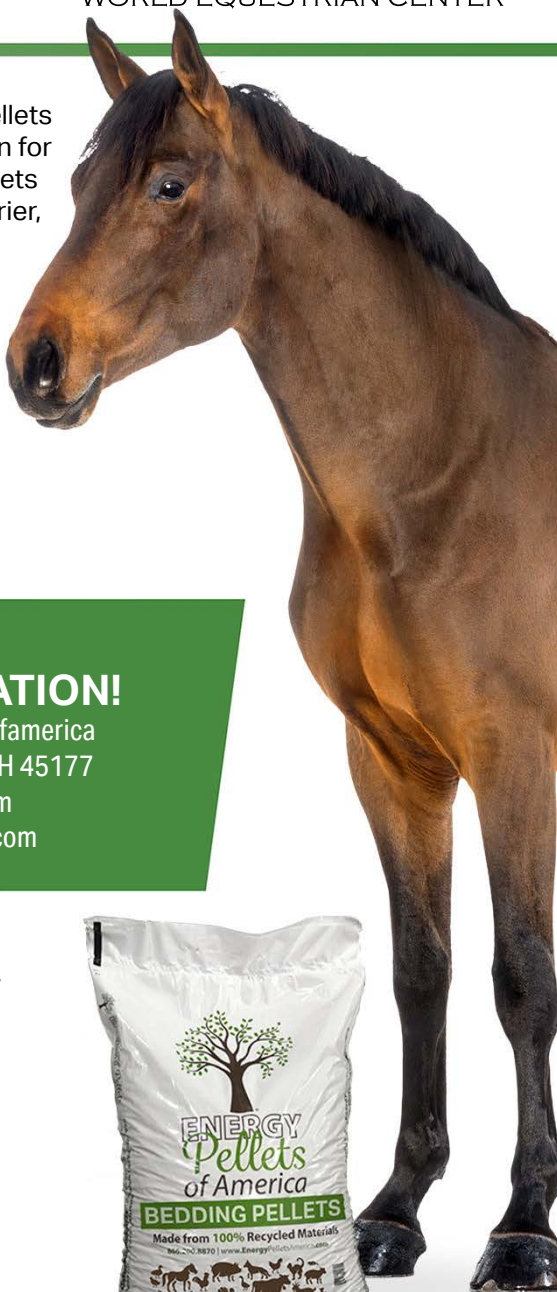
www.EverythingPellets.com

info@energypelletsamerica.com

**LOCATED ONLY
5 MILES FROM**



WORLD
EQUESTRIAN CENTER®



The World Equestrian General Store

Running low on milk, bread,
or eggs? Stop by the
General Store!

Right across the street from
The World Equestrian Center!



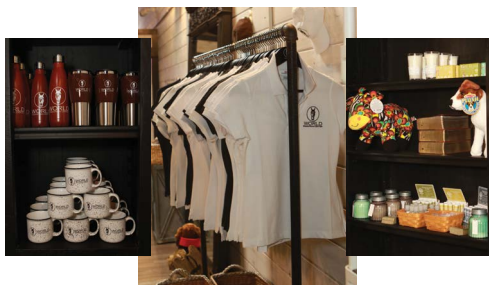
GENERAL STORE

DRIVE THRU • CARRY-OUT

Get your WEC gear at



gifts • home goods • clothing
accessories • and more



Visit us today in Roberts Arena!



HUNTER DIVISIONS

Hunter Courses: Courses will consist of at least eight fences with changes of direction. Fences will simulate obstacles found in the hunt field, such as brush, post and rails, walls, in and outs, gates, etc. No bank or water jumps. Course diagrams will be posted no later than 30 minutes before the class. In some cases, the area of the courtesy circle may be restricted by a dotted line. Under Saddle classes to be shown at a walk, trot and canter both ways of the ring. No martingales permitted. In High Performance, A/O and Junior classes, entries may be asked to hand gallop collectively one way of the ring, at the Judge's discretion. No more than eight shall be asked to hand gallop at one time. Minimum entry requirements: Management reserves the right to combine Sections with less than six entries. No split Section will be held with less than 3 entries. Handy Hunter Courses and jumps to simulate those found in trappy hunt country, and may include natural obstacles, a trot fence and a fence to lead over.

* denotes Conformation Class

** denotes first round score for classic comes from this class if you are entered in the classic

(H) denotes Handy Hunter trip

GREEN CONFORMATION HUNTER

A Green Hunter is a horse of any age in its first year or second year of showing at at 3'6" or higher. Horses may cross enter between any other divisions where eligible. Fences 3'6" Section Fee: \$240 (Model additional \$30). Individual classes may not be entered except for Model. To be judged 70% on performance and 30% on conformation.

1 – Model

2-3-4-5(H)

\$200 Green Conformation Hunter O/F

6 - \$200 U/S

HIGH PERFORMANCE CONFORMATION HUNTER

Open to any horse. No cross entry restrictions. Fences 3'9".

Section Fee: \$240 (Model an additional \$30). Individual classes may not be entered except for Model. To be judged 70% on performance and 30% on conformation.

7 – Model

8-9-10-11(H)

\$200 High Performance Conformation Hunter O/F

12 - \$200 U/S

GREEN WORKING HUNTERS

A Green Hunter is a horse of any age in its first year or second year of showing at 3'6" or higher. Section Fee: \$200 3' & 3'3" \$240 3'6"-3'9" Individual classes may not be entered.

38-39-40-41

\$200 Green Hunter 3' O/F

42 - \$200 U/S

43-44-45-46

\$200 Green Hunter 3'3" O/F

47 - \$200 U/S

13-14-15-16(H)

\$400 Green Hunter 3'6" O/F

17 - \$200 U/S

18-19-20-21(H)

\$400 Green Hunter 3'9" O/F

22 - \$200 U/S

HIGH PERFORMANCE WORKING HUNTERS

Open to any horse. No cross entry restrictions. Fences 4'.

Section Fee: \$260 Class Fee: \$75

23-24-25-26(H)

\$500 High Performance Hunter O/F

27 - \$300 U/S

YOUNG HUNTER

Young Hunters must be age verified. Entry Fee \$FREE

218-219-220-221

Young Hunter 2'9" - 5 Years and Under

222 - U/S

223-224-225-226

Young Hunter 3'0" - 6 Years and Under

227 - U/S

228-229-230-231

Young Hunter 3'3" - 7 Years and Under

232 - U/S

PERFORMANCE HUNTER 3'3"

Open to any horse. No cross entry restrictions. Fences 3'3".

Class Fee: \$50

28-29-30-31(H)	\$300 Performance Hunter 3'3" O/F	32 - \$200 U/S
----------------	-----------------------------------	----------------

PERFORMANCE HUNTER 3'6"

Open to any horse. No cross entry restrictions. Fences 3'6" Class Fee: \$50.

33-34-35-36(H)	\$300 Performance Hunter 3'6 O/F	37 - \$200 U/S
----------------	----------------------------------	----------------

AMATEUR OWNER HUNTERS

Horses to be ridden by an Amateur Owner or an Amateur member of the owner's family. Horse/Rider combination cannot show in both Adult Amateur and Amateur Owner Hunter divisions at the same show. Section Fee: \$225

48-**49-50-51(H)	\$300 Amateur Owner Hunter 18-35 Yrs 3'6" O/F	52 - \$200 U/S
53-**54-55-56(H)	\$300 Amateur Owner 36+ 3'6" O/F	57 - \$200 U/S
701	\$1000 Amateur Owner Hunter Classic 3'6"	Entry Fee: \$100
58-**59-60-61(H)	\$300 Amateur Owner 3'3" 18-35 yrs O/F	62 - \$175 U/S
63-**64-65-66(H)	\$300 Amateur Owner Hunter 3'3" 36+ O/F	67 - \$175 U/S
704	\$1000 Amateur Owner Hunter Classic 3'3"	Entry Fee: \$100

JUNIOR WORKING HUNTERS

Open to horses of any age and ridden by a junior exhibitor. Horse/Rider combination is restricted from showing in both Children's and Junior Hunter Sections at the same show. All horses showing at a Regular Member show in the Junior Hunter Section must have a current measurement card. Section Fee: \$225

68-**69-70-71(H)	\$300 Small Junior Hunter 3'6" 15 & under O/F	72 - \$200 U/S
73-**74-75-76(H)	\$300 Small Junior Hunter 3'6" 16-17 O/F	77 - \$200 U/S
78-**79-80-81(H)	\$300 Large Junior Hunter 3'6" 15 & under O/F	82 - \$200 U/S
83-**84-85-86(H)	\$300 Large Junior Hunter 3'6" 16-17 YEARS O/F	87 - \$200 U/S
702	\$1000 Junior Hunter Classic -3'6"	Entry Fee: \$100
88-**89-90-91(H)	\$300 Small Junior Hunter O/F 3'3"	92 - \$175 U/S
93-**94-95-96(H)	\$300 Large Junior Hunter O/F 3'3"	97 - \$175 U/S
707	\$1000 Junior Hunter Classic 3'3"	Entry Fee: \$100

GREEN PONY HUNTER

All ponies must have a current measurement card or valid measurement form issued by NSBA or NGB. Fences 2'3"-Small Pony / 2'6"-Medium Pony / 2'9"-Large Pony. Section Fee: \$190. Individual classes may NOT be entered. The first class over fences shall count 75% performance and 25% conformation.

*251-252-253-254	\$100 Small Medium Green Pony Hunter O/F	255 - \$100 U/S
*263-264-265-266	\$100 Large Green Pony Hunter O/F	267 - \$100 U/S
708	\$500 Green Pony Hunter Classic	Entry Fee: \$50

NSBA 2'6" HUNTER

Open to all horses, ponies, and riders. Fences 2'6". Individual Classes \$50

208-209-210-211	NSBA 2'6" Hunter O/F	207 U/S
-----------------	----------------------	---------

NSBA 2'9" HUNTER

Open to all horses, ponies, and riders. Fences 2'9". Individual Classes \$50

213-214-215-216	NSBA 2'9" Hunter O/F	212 U/S
-----------------	----------------------	---------

NSBA 3' HUNTER

Open to all. Fences 3' Individual classes \$50.

218-219-220-221	NSBA 3' Hunter O/F	217 U/S
-----------------	--------------------	---------

WEC 3' HUNTER

Open to all. Fences 3' Individual classes \$50.

233-234-235-236	WEC 3' Hunter O/F	237 U/S
-----------------	-------------------	---------

NON PROFESSIONAL HUNTERS

Open to all non-professional junior and amateur riders. Fences 2'6". Individual Classes \$50

168-169-170-171	Non Professional Hunter O/F	172 U/S
-----------------	-----------------------------	---------

NON-THOROUGHBRED HUNTER

Open to all Non-Thoroughbred (Not Jockey Club Registered or eligible to register) horses. Ponies not eligible. Fences 3'. Individual Classes \$50.

188-189-190-191	Non Thoroughbred Hunter O/F	192 U/S
-----------------	-----------------------------	---------

INTERMEDIATE HUNTERS

Open to horses and ponies ridden by a junior exhibitor in the Children's Intermediate or an amateur adult in the Adult Intermediate division. Riders in the Intermediate division may not cross enter at the same show into any class higher than 2'9". Fences 2'6". Classes \$50.

173-174-175-176	Intermediate Children's Hunter O/F	177 U/S
178-179-180-181	Intermediate Adult Hunter O/F	182 U/S
708	\$500 Intermediate Hunter Classic	Entry Fee: \$50

THOROUGHBRED HUNTER

Open to all Thoroughbred (Jockey Club Registered or equivalent) horses, proof must be provided. Fences 3' Individual Classes \$50

183-184-185-186	Thoroughbred Hunter O/F	187 U/S
-----------------	-------------------------	---------

FEATURED HUNTER CLASSES

800. \$5,000 WEC Hunter Derby 3' -Open Fences 3' w/3'5" options.
Top 8 MUST ride for ribbons or forfeit prize money.
Prize Money divided 1st-25%/2nd-19%/3rd-14%/4th-9%/5th-8%/6th-7%/7th-6%/8th-5%/9th-4%/10th-3%.
Entry Fee: \$150
801. \$5,000 WEC Hunter Derby 3' -Non Pro Fences 3' w/3'5" options.
Top 8 MUST ride for ribbons or forfeit prize money.
Prize Money divided 1st-25%/2nd-19%/3rd-14%/4th-9%/5th-8%/6th-7%/7th-6%/8th-5%/9th-4%/10th-3%.
Entry Fee: \$150
803. \$2000 WEC Pony Hunter Derby Open to all ponies ridden by a junior. Fences 2', 2'3", 2'6", 2'9"
(to be determined by Pony section entered)
Prize Money divided 1st-25%/2nd-19%/3rd-15%/4th-10%/5th-9%/6th-8%/7th-7%/8th-7%. Entry Fee: \$125
804. \$2000 Non Pro Hunter Derby: Open to all riders that have not competed above 2'9" except Equitation 3'
at this show.
Prize Money divided 1st-25%/2nd-19%/3rd-15%/4th-10%/5th-9%/6th-8%/7th-7%/8th-7%. Entry Fee: \$125

OPEN TO BEGINNER RIDERS

NSBA Membership Required

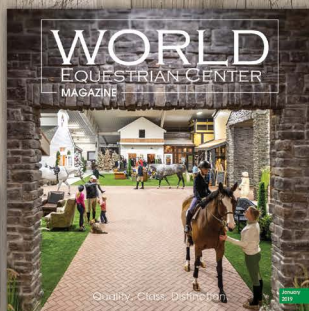
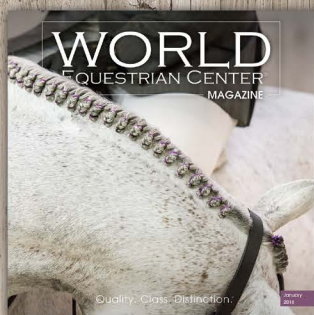
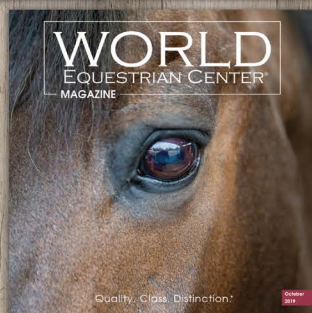
No In & Outs Entry Fee: \$25 Class

601-602-603-604	Walk Trot Ground Rails (May cross enter Crossrails only)	605 - Flat
606-607-608-609	Crossrails O/F	610 - Flat
611-612-613-614	Short Stirrup Hunter 11 & under O/F 2'	610 - U/S
616-617-618-619	Limit Hunter O/F 12 & over 2'	620 - U/S
652	\$200 Short Stirrup/Limit Hunter Classic	
621-622	Short Stirrup/Limit Equitation – O/F 2'	623 - Flat

DON'T
FORGET TO
PICK UP
YOUR FREE

WORLD
EQUESTRIAN CENTER®
MAGAZINE

Browse our publications online at
wec.net/category/magazine



JUMPER DIVISIONS

Jumper Nomination Fee: All jumpers must pay a nomination fee except Low, Medium and High Schooling, Young Jumpers, 1.20m, and Low Children's and Low Adult Jumper section. Children's/Adult/Modified Jumper \$85, all others \$200. This fee is in addition to the declaration (entry fee).

Jumper Specs: Please see schedule for formats. In order to compete in any Jumper classes at recognized competitions as an exhibitor, rider, trainer, or his/her agent(s), a person must be a member of the NSBA.

Attire: Proper attire required in all Classics, Futures Prix, Welcome, and Grand Prix.

Horse Recording: All horses competing in this competition must possess a NSBA Recording - \$35 for Life.

Poling: Manual Poling is not permitted.

Order of Go: In classes offering prize money and where management deems necessary all horses names and positions will be drawn by the computer and in cases with riders on multiple mounts the computer will adjust the order, if necessary, to a minimum of 8 horses between rides (where possible).

Ties: All ties for first place will be jumped off, ties for other than first place will remain tied, and prize money will be split equally.

Declarations: All horses must be declared (entered) in classes in which they intend to show by 5:00 P.M. the day previous to the class to ensure entry to the class.

Championships: Championships will be offered in all divisions that hold 3 classes with 3 or more entries, except Format 339.b. Points used will be 10-6-4-2-1-1/2, except the bonus class which will be 15, 9, 6, 3, 2, 1. Bonus class breaks ties. Bonus class is always the last class of the section.

Prize Money: Unless otherwise specified prize money will be paid out - 1st-25% / 2nd-19% / 3rd-15% / 4th-10% / 5th-9% / 6th-8% / 7th-7% / 8th-7% except classes paying \$1200 or less will be paid out 1st-30% / 2nd-22% / 3rd-15% / 4th-12% / 5th-11% / 6th-10%

THE TIME ALLOWED IS BASED ON A MINIMUM SPEED OF 382 YARDS (350 m/m) PER MINUTE
At all heights to qualify as a spread fence, the fence must be 5cm (2") up to 15cm (6") wider.

NSBA Jumper Formats

339.b. Clear Round

339.a. Faults and Time (One Round)

340.b. Jump Off (After)

340.c. Jump Off (Immediate)

341. Speed (Faults converted)

342. Optimum Time

343.a. Two Phase (Clears Only move forward)

343.b. Two Phase (Athletes who complete Phase One move forward)

JUNIOR/AMATEUR JUMPERS

\$200 Jumper Nomination Fee

HIGH JUNIOR/AMATEUR JUMPER (1.40M-1.45M)

427-428

\$500 High Jr/AM Jumpers (See Schedule for Formats)

Entry Fee: \$70 Per Class

*429

\$3500 Junior/AM Jumper Classic 1.45m

Entry Fee: \$245

* 6 entries required to fill and hold this class

MEDIUM JUNIOR/AMATEUR JUMPER (1.30-1.35M)

424-425

\$450 Medium Junior/AM Jumpers

Entry Fee: \$65 Per Class

*426

\$3000 Medium Junior/AM Jumper Classic

Entry Fee: \$210

* 6 entries required to fill and hold this class

LOW JUNIOR/AMATEUR JUMPER (1.20-1.25M)

421-422	\$400 Low Junior/AM Jumpers	Entry Fee: \$60 Per Class
*423	\$2500 Low Junior/AM Jumper Classic 1.25m	Entry Fee: \$175
* 6 entries required to fill and hold this class		

MODIFIED CHILDREN'S/ADULT (1.15M)

\$85 Nomination Fee

418-419	\$300 Modified Children's/Adult Jumper 1.15m	Entry Fee: \$55 Per Class
*420	\$1500 Modified Children's/Adult Jumper Classic 1.15m	Entry Fee: \$100

CHILDRENS/ADULT JUMPERS (1.10M)

\$85 Nomination Fee

Fences 1.10m-1.15m.

412-413	\$200 Children's Jumper	Entry Fee: \$50 Per Class
*414	\$1500 Children's Jumper Classic	Entry Fee: \$100
415-416	\$200 Adult Amateur Jumper Format	Entry Fee: \$50 Per Class
*417	\$1500 Adult Jumper Classic	Entry Fee: \$100

INTERMEDIATE CHILDREN'S/ADULT JUMPER

Rider may not cross-enter above 2'9"/.85m (except Eq 3') at the same show

No Nomination Fee

400-401	Intermediate Children's/Adult Jumper .80m	Entry Fee: \$50 Per Class
*402	\$750 Intermediate Children's/Adult Jumper Classic .80m	Entry Fee: \$85

NOVICE CHILDREN'S/ADULT

Horse/Rider combination may not cross-enter above 1.00m at this show

No Nomination Fee

403-404	Novice Children's/Adult Jumper .90-.95m	Entry Fee: \$50 Per Class
*405	\$750 Novice Children's/Adult Jumper Classic .95m	Entry Fee: \$85

LOW CHILDREN'S AND LOW ADULT JUMPER - NO NOMINATION FEE

. Fences 1.00m

406-407	Low Children's Jumper	Entry Fee: \$50 Per Class
409-410	Low Adult Jumper	Entry Fee: \$50 Per Class
*408	\$1000 Low Children's Classic	Entry Fee: \$90
*411	\$1000 Low Adult Classic	Entry Fee: \$90

THOROUGHBRED JUMPERS

Jockey Club proof required

430-431-432	Thoroughbred Jumper 1.00-1.05m	Entry Fee: \$50 Per Class
-------------	--------------------------------	---------------------------

OPEN JUMPER DIVISIONS

1.20M JUMPERS – NO NOMINATION FEE

Open to all. No cross entry restrictions.

442-443-444	\$500 1.20m Jumpers	Entry Fee: \$60
-------------	---------------------	-----------------

OPEN JUMPER DIVISIONS

Nomination Fee \$200

Open to all. No cross entry restrictions.

445-446-447	\$750 1.25m Jumpers	Entry Fee: \$50 Per Class
448-449-450	\$1000 1.30m Jumpers	Entry Fee: \$70 Per Class
451-452-453	\$1200 1.35m Jumpers	Entry Fee: \$80 Per Class

481. \$10,000 Futures Prix – Open to all horses that will not compete in the Grand Prix at this show. 1.30-1.35m Proper Attire Required.
Prize Money divided 1st-25%/2nd-19%/3rd-14%/4th-9%/5th-8%/6th-7%/7th-6%/8th-5%/9th-4%/10th-3%.
Entry Fee: \$250

482. \$10,000 Welcome Stake – 1.35m Proper Attire Required.
Prize Money divided 1st-25%/2nd-19%/3rd-14%/4th-9%/5th-8%/6th-7%/7th-6%/8th-5%/9th-4%/10th-3%.
Entry Fee: \$275

483. \$30,000 World Equestrian Center Grand Prix – 1.40-1.45m Proper Attire Required.
Prize Money divided 1st-25%/2nd-19%/3rd-14%/4th-9%/5th-8%/6th-6%/7th-5%/8th-4%/9th-3%/10th-3%/11th-2%/12th-2%. Entry Fee: \$500

SCHOOLING JUMPERS-ALL SHOWS

339.b - No Nomination Fee \$50 Per class

454-455-456	Open .65m Jumpers
457-458-459	Open .70m Jumpers
460-461-462	Open .80m Jumpers
463-464-465	Open .90m Jumpers
466-467-468-475	Low Schooling Jumpers
469-470-471	Medium Schooling Jumpers
472-473-474	High Schooling Jumpers

YOUNG JUMPER CLASSES – ALL SHOWS

Proof of Age Required

See schedule for Format and classes offered in each show

490-491-492	Young Jumper 5 Year Old Format 339.b	Entry Fee: \$Free
493-494-495	Young Jumper 6 Year Old	Entry Fee: \$Free
496-497-498	Young Jumper 7 Year Old	Entry Fee: \$Free

HUNTER SEAT EQUITATION CLASSES - ALL SHOWS

Championships will be awarded in all divisions that hold 3 classes

\$50 Each

500-501	Equitation 11 & U O/F 2'	3'	
502	Equitation 11 & U – Flat	514	Children's Equitation - Flat
503-504	Equitation 12-14 O/F 3'	515-516	Intermediate Child Equitation 2'6"
505	Equitation 12-14 – Flat	517	Intermediate Child Equitation Flat
506-507	Equitation 15-17 O/F 3'3"	518-519	Intermediate Adult Equitation 2'6"
508	Equitation 15-17 – Flat	520	Intermediate Adult Equitation - Flat
509-510	Adult Equitation over Fences 3'	521-522	Children's Pony Eq over Fences 2'/2'6"
511	Adult Equitation Flat	523	Children's Pony Eq – Flat
512-513	Children's Equitation over Fences		

HUNTER SEAT MEDAL CLASSES

\$50 each

551	NSBA Adult Medal
553	NSBA Horsemanship Class 3'6"
554	NSBA Hunter Seat Medal 3'6"
555	NSBA 3'3" Jumping Seat Medal
556	NSBA Pony Medal
557	NSBA High Performance Medal 3'7"-3'9"
558	NSBA Children's Medal 3' 15-17
559	NSBA Children's Medal 3' 14 and under
562	WEC Pony Medal
564	NSBA Hunter Seat Medal 3'3"
565	WEC Adult Medal 3'
566	NSBA 3'3" Hunter Seat Medal
567	World Equestrian Center Premier Equitation Cup 3'6"

AREA ACCOMMODATIONS

The Wilbur Estate

To reserve your room follow this link the online reservation form:

www.worldquestriancenter.com/facilities/cabins/

Cabin Village

To reserve your cabin follow this link the online reservation form:

www.worldquestriancenter.com/facilities/cabins/

Home Away From Home

Directly across the street from the show:

www.worldquestriancenter.com/facilities/cabins/

RV Camping Sites

Include in your stall reservation.

Wilmington Hotels

Holiday Inn – Roberts Centre 937.283.3200

General Denver Hotel– 937.383.4141

Hampton – 937.382.4400

Holiday Inn Express – 937.382.5858

Royalton Inn and Suites – 937.366.6864

Cowan Lake Cabins – 866.644.6727

DIRECTIONS TO THE WORLD EQUESTRIAN CENTER

The World Equestrian Center is located at 4095 SR 730 (Truesdell St) Wilmington, OH 45177. Take I-71 to Exit #50. From the South you will turn right off the exit ramp onto SR 68 South toward Wilmington, OH. From the North you will turn left off the ramp toward Wilmington, OH. Continue approximately 2.5 miles to Center Rd (Only goes to the right) and turn right on Center Rd. Continue less than ½ mile to the first road, Nelson, and turn left. Take Nelson through some traffic lights to the end and turn right on SR 730. The World Equestrian Center is located approximately 2 miles on the left.

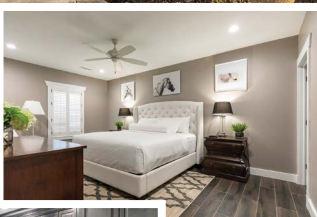
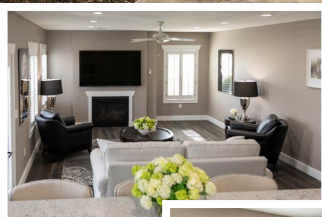
EMERGENCY INFORMATION

Nearest Hospital

Clinton Memorial Hospital, 610 W Main St, Wilmington, OH 45177 937.382.6611

Nearest Level 1 Trauma Unit

University of Cincinnati Hospital, 234 Goodman Street Cincinnati, Ohio 45219 513.584.1000



The Wilbur Estate is a stunning plantation-style mansion with five elegant luxury suites. The suites at The Wilbur Estate offer all the comforts of home, including a completely outfitted custom kitchen, upscale furnishings, linens and beautiful art. The spacious porch and garden provide guests with a tranquil place to relax after a day of showing.

Wilbur's Estate is centrally located on the horse show grounds, just steps from arenas, stabling, and the Paddock Club.

VIP parking is included in your stay at Wilbur Estate.

THE *Wilbur*
ESTATE

CALL OR EMAIL NOW TO RESERVE YOUR SUITE!

937.382.0985 | wec.guestservice@gmail.com

THANK YOU

FOR YOUR SUPPORT

The World Equestrian Center provides a truly unique equestrian experience to our customers and the equestrian - focused customers of our sponsors. We are proud to partner with the following companies that support equestrian sport:



ANTARÈS
SELLIER FRANCE



HORSE FIRST
SUPPLEMENTS



TRIBUTE
EQUINE NUTRITION



World Equestrian Center
c/o Julie Agar
2018 SR 134
Wilmington, OH 45177



WORLD
EQUESTRIAN CENTER

THE PADDOCK CLUB

AND EQUESTRIAN ART GALLERY

For more information: 937.556.2209

www.wec.net |    | Wilmington, Ohio

Photography: Third Shutter from the Sun