



Prize list for the
**Great American Insurance Group / United States Dressage Federation
Region 3 Dressage Championships**

Licensed by the United States Equestrian Federation, Inc.
and the

World Equestrian Center September Dressage

September 19 – September 22, 2024

**Featuring over \$30,000 in Prize Money from USDF
Qualifier for the 2024 US Dressage Finals presented by Adequan
USDF Adult Amateur Equitation Regional Final Class presented by Big Dee's Tack and Vet Supply**

USEF/USDF Recognized No. 342934
Level Four Competition
World Equestrian Center Ocala, Florida

Opening Date: Monday, July 29, 2024

Entries Received By/Closing Date: Monday, August 26, 2024

Qualification Year for Championship Classes: Tuesday, September 12, 2023 to Monday, August 26, 2024

Official Qualifying Competition for:
2025 Great American/USDF Regional Championships

Judges: Dinah Babcock (S), Kristi Wysocki (S), Cesar Torrente (S), Sue Mandas (S), Sara Schmitt (S), David Schmutz (S), and Lisa Schmidt (S)

Technical Delegates: Jean Kraus (R) and Beth Davidson (R)

Show Manager and Entry Processing: Teresa Uddo 352-636-2669 teresa.uddo@wec.net

Show Secretary: Debbie Landon 507-208-6022 debbielandon3@aol.com

Assistant Show Secretaries: Angela Goodwin Volpert and Jennifer Bateman and Katherine Mucha

Volunteer and Vendor Coordinator: Christy Baxter 561-252-4510 christy.baxter@wec.net

Photographer: Andrew Ryback Photography [website: www.andrewryback.com](http://www.andrewryback.com)

Announcers: Cynthia Kurth, Wendy Shelton, and Christine Davis

Awards Coordinator: Jennifer Glass

Veterinarian (on grounds during show hours): Dr. Larry Wexler 352-812-1411

Farrier (on grounds during show hours): Scott Lampert 612-282-5529

EMT: On grounds during show hours

Licensee: Arena Horse Shows of Ocala

The official prize list of the Great American/USDF Region 3 Dressage Championship appears in the USDF Regional Championship Official Prize List webpage and may be obtained after May 1, 2024 from the USDF website or by calling USDF.

On-line entries: Available at www.foxvillage.com on opening date of the competition.

No Mailed Entries Accepted

Important: Competitors are responsible to include all USDF and USEF memberships for horse, owner, rider, trainer, and coach listed on entry form or pay non-member fees. Copies of the flu/rhino vaccinations (within 6 months of show dates) and negative coggins (within one year of show dates) are also required with entry. ALL horses are required to have a Statement of Health or a Health Statement from a licensed vet within 14 days of the start of competition.

Please review all Great American/USDF Regional Championship rules and eligibility requirements at <http://www.usdf.org>. Also see the "General Regulations and Entry Specification" section of this prize list for additional policies this show subscribes to and follows.



World Equestrian Center - Physical Address: 1750 NW 80th Ave, Ocala, FL 34482
See page 5 for detailed directions to WEC. www.worldequestriancenter.com

Entry Fees:

Class fees:	See class list for specific class fees.
Office charge per entry:	\$60 per horse/rider combination.
Late entries:	\$75 for entries that are received after the entries closing date of August 26
Credit card fee	A fee of 3% will be charged on all credit card transactions.
Emailed entries:	\$20 per entry.
Post entries at show:	Will be taken as scheduling permits, class fee plus \$10.00 (must request by 3:00 pm the day prior).
Rider/Horse change:	\$25 for either rider or horse change after entry submitted.
Non-competing horses:	\$125 for the weekend. Must fill out entry form for bridle number and pay stabling and office fees.
RV Hook-up:	https://worldequestriancenter.com/ocala-fl/visit/stay
Golf cart rental:	https://www.wecgolfcarts.com
Stabling:	Permanent 12 x 12 block stalls, fans and mattress floors,
Incomplete Entry Fee:	\$25 per incomplete entry

Stall Fees (stalls available 10 AM Wednesday to 7 PM Sunday):

Full Show Stall (Wed – Sun)	\$300/stall
Full Show Tack Stall (Wed – Sun)	\$300/stall
Stabling per day	\$125/stall/day (not per night, must pay per day on grounds).
Tack Stall per day	\$125/stall/day (not per night, must pay per day on grounds).
Bedding:	No outside bedding allowed. Bedding can be purchased through the WEC feed store after stalls are assigned. A link to the feed store will be sent out with stall charts.
Additional nights stabling:	\$50 per stall per night for nights other than show dates.
Hay and Grain:	May be purchased through the WEC feed store.
Haul in Fee:	\$45 per day (only if not renting a stall)

NOTE: Per USEF rules, all horses entered in GAIG/USDF Championship classes must have a stall. Haul-ins will not be allowed. This does not apply to the Dressage Seat Equitation Championship classes.

Awards Ceremonies: Riders placing in Great American/USDF Regional Championship classes must be present, mounted and in full riding attire for awards ceremonies (eight places for all Championship classes). Attendance to award ceremonies is not mandatory, but riders should let show management know if they are not attending.

Late Entries: Late entries, including Great American Championship entries, will be accepted at the discretion of the show secretary and show committee based on a space available basis and charged a \$75 late fee. If the classes are oversubscribed, a waiting list (in the order of date received) will be maintained.

USEF Equine Vaccination Rule & Health Requirements for entry to show grounds in 2024: All horses entering the showgrounds of a USEF licensed competition MUST be accompanied by documentation showing vaccinations for Equine Influenza Virus (Flu) and Equine Herpes Virus (Rhinopneumonitis) within 6 months of the show dates. **This is mandatory for every horse entry. See USEF rule GR844.** Must also have a current negative EIA/Coggins test within 12 months of the show dates. Horses not entered in the show may not be brought onto the show grounds without prior arrangement with show management.

Entry Cancellation/Refunds: Cancellations accepted only in writing by mail or e-mail prior to or on the closing date. Entire entry refunded minus the office fee. **No refunds of any kind for any reason, including Act of God, will be given after the closing date or throughout the competition.** All fees collected on behalf of USEF and USDF to be submitted to the Federation provided all outstanding fees are paid in full; else it will be applied to those fees. All entries are accepted with this understanding.

No Shows and Scratches: All “No Shows” that have not contacted the show office prior to their first ride will be considered a scratch for the rest of the show and time slots may be filled.

Great American Insurance Group (GAIG)/USDF Qualifying Classes: Indicate that the class is to count for qualifying by placing a **Q** after the class number on your entry. Qualifying does not require a separate ride. An exhibitor riding in the Open, AA, or JR/YR rider classes must pay an additional \$20 USDF qualifying fee to have this score entered in the GAIG/USDF qualifying division at that level.

Confirmation/Ride Times: Confirmation of entry will be e-mailed. All e-mail addresses must be clearly printed. Ride times and show updates will be posted on www.foxvillage.com. Official ride times will be posted at the show office by noon on Wednesday, September 18th. Entries taken on a first come, first served basis. Entries may close early for non-championship classes if time limits for judges are filled. Remaining entries received before the Received By/Closing Date will be placed on a wait list.

Awards for Open Show Classes: Divisions (JR/YR, AA, Open) may be run concurrently as one class. Divisions will be pinned separately. Riders must clearly specify division choice. When no designation is made, riders will automatically be entered as Open. Riders may enter only one division per class. Ribbons to sixth for each class. No awards for Qualifying classes.

Arenas: Outdoor and Indoor arenas have all weather sand mix footing on limestone base. Warm-up arenas have comparable footing. All tests will be ridden in an 20 x 60 arena. **NO LUNGEING** in warmup arenas – use designated lunging arenas only. Coaching may **ONLY** be done from the outside of the arenas. Competition arenas will be open for schooling on Wednesday (before show weekend) until posted close time in show office. Limited schooling may be available in the evenings by management decision, times will be posted in the show office. Gates for the USDF Championship classes will **NOT** be closed.

Accommodations: The Equestrian Hotel (866-478-9267) <https://equestrianhotel.com/>, The Riding Academy (352-325-9935), <https://ridingacademyhotel.com>

Concessions: Food and concessions will be available on the show grounds during competition hours.

Golf Cars/Mopeds/other Motorized Vehicles: Minors who do not have a valid driver’s license which allows them to operate a motorized vehicle in the state in which they reside will not be permitted to operate a motorized vehicle of any kind, including, but not limited to, golf carts, motorcycles, scooters, or farm utility vehicles, on the competition grounds of licensed competitions. Minors who have a valid temporary license may operate the above-described motorized vehicles as long as they are accompanied by an adult with a valid driver’s license. The parent/legal guardian or individual who signs the entry blank as a parent or guardian of a minor operating a motorized vehicle in violation of this rule are solely responsible for any damages, claims, losses or actions resulting from that operation. Violations of this rule will be cause for penalties against those responsible for the child committing the offense. Wheelchairs and other mobility assistance devices for individuals with disabilities are exempt from this rule.

The unsafe use of personal electronic transport devices, as determined by the competition officials and management in their sole discretion, that do not require a driver’s license to operate, including but not limited to segways, hover boards, and single wheeled scooters is prohibited on competition grounds. Operating such devices in areas where people gather may be deemed “unsafe use” if there is a risk of harm to others. If the operator of the device is a minor, the parent/legal guardian or individual who signs the entry blank as a parent or guardian of a minor operating the device in violation of this rule is accountable and may be subject to penalties. Wheelchairs and other mobility assistance devices for individuals with disabilities are exempt from this rule. **See USEF rule GR 1301.7.**

Warning: Under the Equine Activity Liability Act, each participant who participates in an equine activity expressly assumes the risks of engaging in and legal responsibility for injury, loss, or damage to person or property resulting from the risk of equine activities.

Weather/Acts of God/Accidents or Emergency Policy: Management reserves the right to cancel any classes due to hazardous weather, acts of God, accidents, or emergencies. Every effort will be made to reschedule with priority given to the USEF Program classes. No refunds for cancellations due to hazardous weather, acts of God, accidents, or emergencies. **See USEF rule GR311.**



Don't forget that declarations for the US Dressage Finals are due by midnight on the day prior to the first day of your regional championship competition.

US Dressage Finals
presented by Adequan®

For more information, visit.
usdressagefinals.com



Great American / USDF Region 3 Championships Award Information

Awards ceremonies for Regional Championship classes: A tentative schedule for the awards ceremonies will be printed in the show program and the official schedule will be posted in the show secretary's office by noon on the day prior to the beginning of the competition. Classes are placed Champion and Reserve through eighth place for each level and listed division.

Prize money for Regional Championship classes: Prize money for Great American/USDF Regional Championships will be paid directly by the USDF office to the recorded horse owner within thirty (30) days of the last day of each championship. Champions and Reserve Champions in each Great American/USDF Regional Championship class who obtain a score of 57% or better will receive prize money. Champions will receive \$440, and Reserve Champions will receive \$293.



UNITED STATES DRESSAGE FEDERATION™

Regional Adult Amateur Equitation Program

The USDF Regional Adult Amateur Equitation Program recognizes adult amateurs competing in equitation and promotes correct seat, position, and use of the aids in dressage. An Adult Amateur Equitation Regional Final class presented by Big Dee's Tack and Vet Supply will be held in conjunction with each of the nine USDF Regional Dressage Championship competitions, providing adult amateurs with additional opportunity for recognition. Ribbons awarded through 8th Place and gift certificates awarded to top four riders.

Adult amateurs wishing to qualify to compete in an Adult Amateur Equitation Regional Final may do so by meeting the following requirements.

Qualifying Requirements

To be eligible for the USDF Adult Amateur Equitation Regional Final class, rider must have

- a) Earned a score of 70% or higher in any dressage seat equitation class (except walk/trot) at a USEF-licensed/USDF-recognized Dressage competition within the qualifying period of the applicable regional championship.

or

- b) Qualified to compete in any regional dressage championship class (excluding freestyles).

Membership Requirements

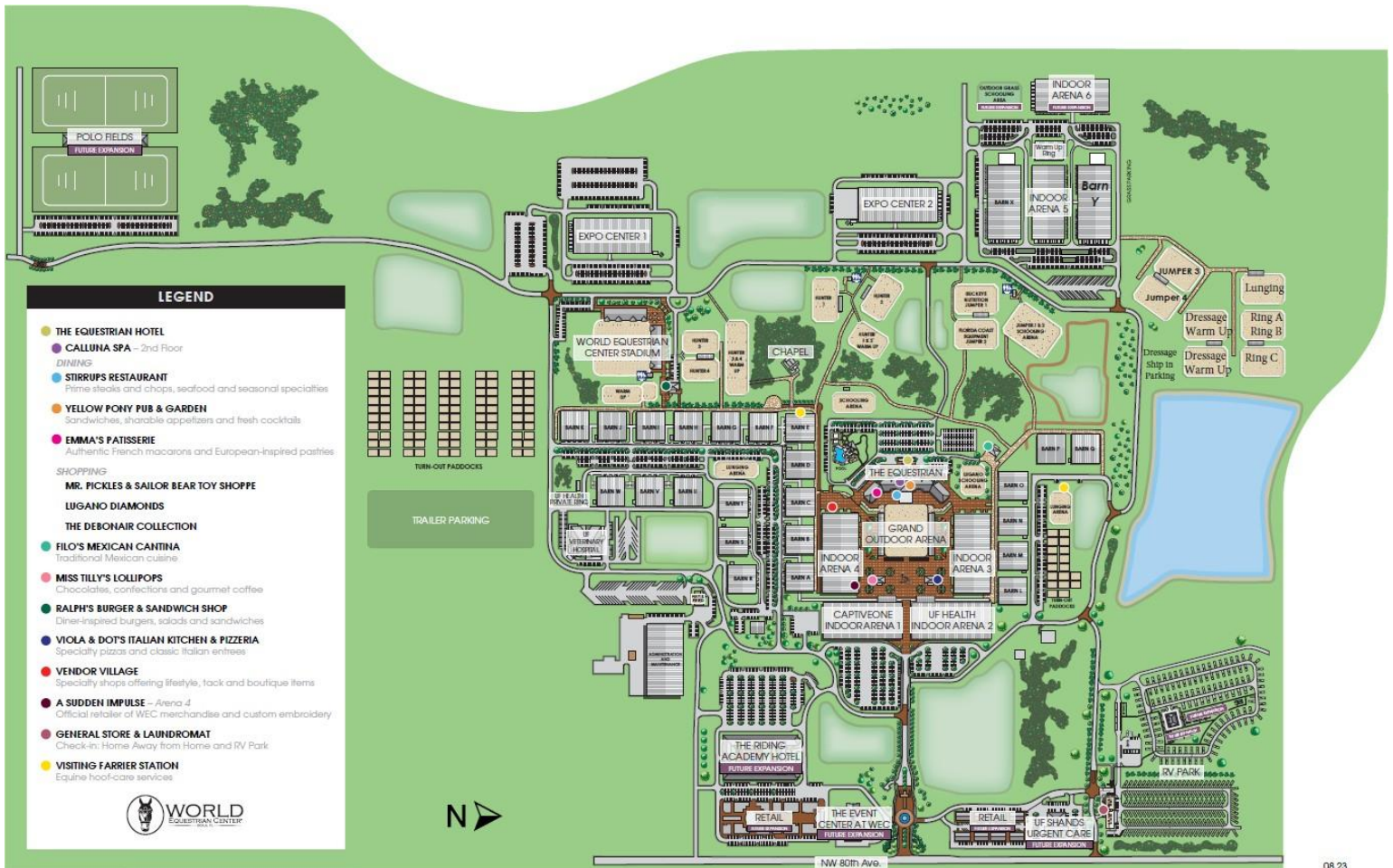
- Rider must have a USDF Participating Membership at the time the qualifying score is earned, and at the time of the Regional Final class.
- Rider must be an adult amateur, in accordance with GR1306 of the USEF rules, and be designated with USEF as an adult amateur when the score is earned, and at the time of the Regional Final class.
- Owner must have a USDF Participating or Business Membership when the qualifying score is earned, and at the time of the Regional Final class.
- Horse must have a USDF Lifetime Horse Registration when the qualifying score is earned, and at the time of the Regional Final class.

The USDF Regional Adult Amateur Equitation Program rules and information can be found on the USDF [website](#).

Directions to World Equestrian Center

1750 NW 80th Ave
Ocala, Florida 34482

From I-75: Take Exit 352 to FL-40W for 5.4 miles, Turn right onto NW 80th Avenue. WEC will be 1.2 miles on your left,



Step onto the National Stage
and have the experience of a lifetime.



US Dressage Finals

presented by Adequan®

Nov. 7 –10, 2024 • Kentucky Horse Park

Compete in a national, head-to-head championship,
Training Level through Grand Prix; adult amateur and open divisions.
Training Level through Intermediate I (non-freestyle) Jr/YR Classes

OVER \$125,000 IN PRIZE MONEY.

\$50,000 in US Dressage Finals Travel Grant Funds available to eligible competitors.

For more information visit

usdressagefinals.com



LeMieux



Great American / USDF Region 3 Championships Class List

Thu #	Fri #	Sat #	Sun #	Class Name (* GAIG/USDF Qualifying)	Divisions	Fee	Q
				Great American/USDF Championship Classes			
				Freestyle Championship Classes			
	351			Great American/USDF Freestyle – First Level – Open, JR/YR *	Open, JR/YR	\$90	\$110
	351.1			Great American/USDF Freestyle – First Level – AA *	AA	\$90	\$110
		352		Great American/USDF Freestyle – Second Level - Open, JR/YR *	Open, JR/YR	\$90	\$110
		352.1		Great American/USDF Freestyle – Second Level - AA *	AA	\$90	\$110
		353		Great American/USDF Freestyle – Third Level – Open, JR/YR *	Open, JR/YR	\$90	\$110
		353.1		Great American/USDF Freestyle – Third Level – AA *	AA	\$90	\$110
	354			Great American/USDF Freestyle – Fourth Level – Open, JR/-YR *	Open, JR/YR	\$90	\$110
	354.1			Great American/USDF Freestyle – Fourth Level – AA *	AA	\$90	\$110
		355		Great American/USDF Freestyle – I1 – Open, JR/YR *	Open, JR/YR	\$90	\$110
		355.1		Great American/USDF Freestyle – I1 – AA *	AA	\$90	\$110
		356		Great American/USDF Freestyle – Grand Prix – Open, JR/YR *	Open, JR/YR	\$90	\$110
		356.1		Great American/USDF Freestyle – Grand Prix – AA *	AA	\$90	\$110
				Open Division Championship Classes			
	432			Great American/USDF Training Level Open Championship *	Open	\$90	\$110
		435		Great American/USDF First Level Open Championship *	Open	\$90	\$110
			436	Great American/USDF Second Level Open Championship *	Open	\$90	\$110
	433			Great American/USDF Third Level Open Championship *	Open	\$90	\$110
430				Great American/USDF Fourth Level Open Championship *	Open	\$90	\$110
			437	Great American/USDF PSG Open Championship *	Open	\$90	\$110
	434			Great American/USDF I1 Open Championship *	Open	\$90	\$110
431				Great American/USDF I2 Open Championship *	Open	\$90	\$110
			438	Great American/USDF Grand Prix Open Championship *	Open	\$90	\$105
				Adult Amateur (AA) Division Championship Classes			
			536	Great American/USDF Training Level AA Championship *	AA	\$90	\$110
		535		Great American/USDF First Level AA Championship *	AA	\$90	\$110
	532			Great American/USDF Second Level AA Championship *	AA	\$90	\$110
			537	Great American/USDF Third Level AA Championship *	AA	\$90	\$110
530				Great American/USDF Fourth Level AA Championship *	AA	\$90	\$110
	533			Great American/USDF PSG AA Championship *	AA	\$90	\$110
			538	Great American/USDF I1 AA Championship *	AA	\$90	\$110
531				Great American/USDF I2 AA Championship *	AA	\$90	\$110
			539	Great American/USDF Grand Prix AA Championship *	AA	\$90	\$110
	534			USDF Adult Amateur (AA) Equitation Regional Final	AA	\$90	

Note: Classes may not necessarily run in the order listed.

Great American / USDF Region 3 Championships Class List

Thu #	Fri #	Sat #	Sun #	Class Name (* GAIG/USDF Qualifying)	Divisions	Fee	Q
Great American/USDF Championship Classes							
				Junior / Young Rider (JR/YR) Division Championship Classes			
	630			Great American/USDF Training Level JR/YR Championship *	JR/YR	\$90	\$110
		635		Great American/USDF First Level JR/YR Championship *	JR/YR	\$90	\$110
			640	Great American/USDF Second Level JR/YR Championship *	JR/YR	\$90	\$110
	636			Great American/USDF Third Level JR/YR Championship *	JR/YR	\$90	\$110
		631		Great American/USDF Fourth Level JR/YR Championship *	JR/YR	\$90	\$110
			637	Great American/USDF PSG JR/YR Championship *	JR/YR	\$90	\$110
	632			Great American/USDF I1 JR/YR Championship *	JR/YR	\$90	\$110
		638		Great American/USDF I2 JR/YR Championship *	JR/YR	\$90	\$110
			641	Great American/USDF Grand Prix JR/YR Championship *	JR/YR	\$90	\$110
			633	Great American/USDF FEI JR Championship *	JR	\$90	\$110
	634			Great American/USDF FEI YR Championship *	YR	\$90	\$110
		639		USDF Dressage Seat Medal Semi-Finals 13 and Under	JR	\$90	
			642	USDF Dressage Seat Medal Semi-Finals 14 to 18	JR	\$90	

Note: Classes may not necessarily run in the order listed.



Great American / USDF Region 3 Championships Class List

Thu #	Fri #	Sat #	Sun #	Class Name (* GAIG/USDF Qualifying)	Divisions	Fee	Q
Open Show Classes							
1	101	201	301	USEF Training Level Test One	JR-YR / AA / Open	\$60	
2	102	202	302	USEF Training Level Test Two	JR-YR / AA / Open	\$60	
3	103	203	303	USEF Training Level Test Three *	JR-YR / AA / Open	\$60	\$80
4	104	204	304	USEF First Level Test One	JR-YR / AA / Open	\$60	
5	105	205	305	USEF First Level Test Two	JR-YR / AA / Open	\$60	
6	106	206	306	USEF First Level Test Three *	JR-YR / AA / Open	\$60	\$80
7	107	207	307	USEF Second Level Test One	JR-YR / AA / Open	\$60	
8	108	208	308	USEF Second Level Test Two	JR-YR / AA / Open	\$60	
9	109	209	309	USEF Second Level Test Three*	JR-YR / AA / Open	\$60	\$80
10	110	210	310	USEF Third Level Test One	JR-YR / AA / Open	\$60	
11	111	211	311	USEF Third Level Test Two	JR-YR / AA / Open	\$60	
12	112	212	312	USEF Third Level Test Three *	JR-YR / AA / Open	\$60	\$80
13	113	213	313	USEF Fourth Level Test One	JR-YR / AA / Open	\$60	
14	114	214	314	USEF Fourth Level Test Two	JR-YR / AA / Open	\$60	
15	115	215	315	USEF Fourth Level Test Three *	JR-YR / AA / Open	\$60	\$80
16	116	216	316	FEI Prix St George *	JR-YR / AA / Open	\$70	\$90
17	117	217	317	FEI Intermediare I *	JR-YR / AA / Open	\$70	\$90
18	118	218	318	FEI Intermediare II *	JR-YR / AA / Open	\$70	\$90
19	119	219	319	FEI Grand Prix *	JR-YR / AA / Open	\$70	\$90
20				USDF Freestyle TOC (specify test TR to 4 th level) * Training (TR) level is not eligible for qualifying.	JR-YR / AA / Open	\$60	\$80
21				FEI Freestyle TOC (specify test) *	JR-YR / AA / Open	\$70	\$90
	122			FEI Junior Team Test (USEF/NAYC Qualifying)	JR	\$80	\$100
		223		FEI Junior Individual Test (USEF/NAYC Qualifying)	JR	\$80	
			324	FEI Junior Freestyle Test (USEF/NAYC Qualifying)	YR	\$80	\$100
	125			FEI Young Rider Team Test (USEF/NAYC Qualifying)	YR	\$80	
		226		FEI Young Rider Individual Test (USEF/NAYC Qualifying)	YR	\$80	
			327	FEI Young Rider Freestyle Test (USEF/NAYC Qualifying)	YR	\$80	

Note: Classes may not necessarily run in the order listed.



**GREATAMERICAN.**
INSURANCE GROUP

AgriBusiness®
Equine Mortality

Photo: Susan Pickett Photography

www.GreatAmericanInsuranceGroup.com
4414 SW College Rd, Suite 1422, Ocala, Florida 34474

Great American Insurance Group, 381 East Fourth Street, Cincinnati, Ohio 45202. Coverage is underwritten by Great American Insurance Company, Great American Alliance Insurance Company, Great American Assurance Company and Great American Insurance Company of New York, which are authorized insurers in all fifty states and D.C. Great American Insurance Company is the owner of the following registered service marks: The Great American Insurance Group eagle logo and the word marks Great American® and Great American Insurance Group® are registered service marks of Great American Insurance Company.



UNITED STATES DRESSAGE FEDERATION™

USDF US Dressage Finals Eligibility

The US Dressage Finals is an Invitational competition using the USEF/USDF Regional Championship program to qualify. Qualifying takes place at each of the nine Great American/USDF Regional Dressage Championships, based on either 1) Ranking in a Regional Championship Class or 2) Wild Card Eligibility. Either must be achieved at a Regional Championship in a class and eligible division offered at the US Dressage Finals.

I. Qualification Based on Ranking in a Regional Championship Class:

Champion and Reserve Champion horse/rider combinations for each level and eligible division from each of the nine Regional Championships will be automatically invited, provided the following three requirements are met: US Citizenship; Declaration of Intent completed by the deadline; and earning an eligible ranking in a Regional Championship class.

Note: Beginning in 2023, Freestyle classes at Regional Championships will have two different classes per level, Open/Junior/Young Rider and Adult Amateur. The top two declared horse/rider combinations from the Open/Jr/YR Freestyle class and the top two declared Adult Amateur horse/rider combinations from the AA Freestyle class for each level from each of the nine Regional Championships will be automatically invited.

To be eligible for the Adult Amateur division in the Freestyles at the US Dressage Finals, competitors must check the AA box on the Regional Championship entry form and must provide proof of Adult Amateur status prior to competing in their Regional Championship classes.

New for 2024: The US Dressage Finals will offer a Prix St. Georges Jr/YR Final class as well as an Intermediate I Jr/YR Final class.

- 1) United States Citizenship Requirement: **To compete in any US Dressage Finals class, the rider must be a US citizen.**
- 2) Declaration Requirement: **The horse/rider combination must declare their intention to participate** by completing the Declaration of Intent form by midnight on the day prior to the first day of their Regional Championship competition (including any open class day before the start of championship classes). **There is no fee to declare, but horse/rider combinations must declare at the level(s) and eligible division(s) they intend to compete in at the US Dressage Finals. Go to www.usdressagefinals.com to declare.**
- 3) Ranking in a Regional Championship Class: **Eligibility to enter US Dressage Finals classes is based on a horse/rider combination's ranking in a Regional Championship class. Champions and Reserve Champions in eligible classes will be automatically invited, as long as they have declared by the deadline. Note: In order to be named Champion and Reserve Champion in a Regional Championship class, a horse/rider combination must have achieved a score of 57% or higher.**

In the event that the Champion and/or Reserve Champion declines the invitation, or are ineligible to compete in the US Dressage Finals, the horse/rider combination that has the next highest ranking in the class will be eligible, providing they:

1. **Are a US citizen.**
2. **Completed the Declaration of Intent for that particular level and division by the deadline.**
3. **Achieved the pre-requisite score of 57% or higher.**

If that combination declines, the same process will be followed down through the fifth ranked declared horse/rider combination for that Finals level and division.

No notifications will be issued beyond the fifth ranked, of declared horse/rider combination except as may be eligible through the Wild Card invitations described below.

II. Qualification Based on Wild Card Eligibility:

Horse/rider combinations who are not otherwise qualified to compete in the US Dressage Finals based on their Regional Championship ranking (see above) may be invited to participate in a Finals class by earning a Wild Card score achieved at one of the nine Regional Championships, provided the following two requirements are met: US Citizenship and earning an eligible Wild Card score in a Regional Championship class.

- 1) United States Citizenship Requirement: To compete in any US Dressage Finals class, the rider must be a US citizen.
- 2) Eligible Wild Card Score: Eligibility to enter US Dressage Finals classes is based on a Wild Card score earned in a Regional Championship class. For all levels and divisions from Training through Grand Prix, a horse/rider combination that competes in a Regional Championship class and achieves a score at or above the score listed below for that level and division may compete in the same level and division at the US Dressage Finals.

Note: Horse/rider combinations are not required to have filed a "Declaration of Intent" in order to receive a Wild Card invitation.

	OPEN:	AA:	JR/YR:
Training:	72%	68%	68%
First:	72%	68%	68%
Second:	69%	65%	65%
Third:	69%	65%	65%
Fourth:	69%	65%	65%
Prix St. Georges:	68%	65%	65%
Intermediate I:	68%	64%	64%
Intermediate II:	66%	64%	
Grand Prix:	66%	64%	
 <u>Freestyles</u>			
First:	70%	70%	
Second:	70%	70%	
Third:	70%	70%	
Fourth:	70%	70%	
Intermediate I:	68%	68%	
Grand Prix:	68%	68%	

III. Invitations:

Invitations and notifications will be emailed to eligible/qualified horse/rider combinations immediately after each Regional Championship. There will be three categories of emails:

- 1) Invitation emails will be sent to the top two of the top five declared horse/rider combinations.
- 2) Invitation emails will be sent to combinations eligible for a Wild Card.
- 3) Notification emails will be sent to the third to fifth declared horse/rider combinations, notifying them that they are on the reserve/alternate list and reminding them to check the website for any status changes that would make them eligible for an invitation.

In the event that an invited horse/rider combination scratches, invitations may be issued up to the start of the competition.

Note: Competitors do not need to receive an actual invitation to nominate themselves for the US Dressage Finals. The entry system will have their eligibility status and they can nominate prior to receiving an email invitation.

IV. Nomination Requirement:

Nomination, including payment of the nomination fee, is required for participation in US Dressage Finals classes, whether qualifying through ranking in a Regional Championship class or by Wild Card Eligibility. The nomination deadline is midnight, 96 hours after the last championship day in the regional championship show in which the horse/rider combination competed. Each US Dressage Finals horse/rider combination is required to complete the nomination (preliminary entry) process including the

horse/rider combinations on the reserve/alternate list. The Nomination fee paid will be applied to the total amount due at Closing Date.

V. Entry Requirements

Completed entries for the US Dressage Finals *must be received* by the closing date, Saturday, October 19th midnight Eastern Time. Priority for all stabling requests (including stabling in Alltech Barns and for double stalls) will be based on the date of receipt of the COMPLETE online entry. Each online entry must include the following: full payment, fully signed 2024 US Dressage Finals entry form and signed USEF Waiver, current negative Coggins test and current Flu/Rhino Vaccine Record. All documents must be uploaded when you receive your online entry confirmation from Horseshowoffice.com, that is emailed immediately to you after you enter online. The last factor in determining stabling priority will be the allotted number of Alltech stalls available per region.

US Dressage Finals Deadlines		
Regional Championship	Declaration	Nomination
1	Wednesday, October 9, 2024	Thursday, October 17, 2024
2	Wednesday, September 11, 2024	Thursday, September 19, 2024
3	Wednesday, September 18, 2024	Thursday, September 26, 2024
4	Wednesday, October 9, 2024	Thursday, October 17, 2024
5	Wednesday, September 18, 2024	Thursday, September 26, 2024
6	Wednesday, October 2, 2024	Thursday, October 10, 2024
7	Wednesday, September 25, 2024	Thursday, October 3, 2024
8	Wednesday, September 18, 2024	Thursday, September 26, 2024
9	Wednesday, October 2, 2024	Thursday, October 10, 2024
<i>Above deadlines are midnight in the time zone of the specific Regional Championship</i>		
Entry Closing Date is Saturday, October 19th midnight Eastern Time		
See Official Prize List for more information.		

For evolving event and competitor information, usdressagefinals.com will be your source.

Nutrition You Can Trust

Developed by Veterinarians to Address Health at the Cellular Level

WELLNESS + DIGESTIVE CARE



Platinum Performance® GI

For added gastrointestinal and immune health, this formula provides probiotics, prebiotics and additional glutamine.

RECOMMENDED FOR:

- Digestive health concerns
- Difficulty maintaining weight
- During training, competition or travel

WELLNESS & PERFORMANCE



Platinum Performance® Equine

Delivering results for nearly 30 years, this wellness formula supports total body health and performance.

RECOMMENDED FOR:

- All ages and life stages
- All levels of activity

WELLNESS + JOINT SUPPORT



Platinum Performance® CJ

For high level joint support, powerful joint-supporting nutrients, such as ASU for cartilage health, are in this formula.

RECOMMENDED FOR:

- Advanced joint care needs
- Additional tendon and ligament support
- Performance horses or prospects



Show Safe | 100% Satisfaction Guaranteed | Platinum Colic Coverage® Eligible



LEARN MORE



Total Body Wellness in One Bucket Since 1996

All three wellness formulas provide omega-3 fatty acids, antioxidants, vitamins, trace minerals, amino acids and more to transform horse health at the cellular level — head to hoof, coat to gut. Each bucket encompasses thousands of hours of research and the finest ingredients available.

PLATINUM
PERFORMANCE®

PlatinumPerformance.com
(800) 553-2400

©2024 Platinum Performance®



UNITED STATES DRESSAGE FEDERATION™

USDF

Great American Insurance Group/USDF Regional Championships Required Rules for Prize List

A. MEMBERSHIP/REGISTRATION REQUIREMENTS FOR QUALIFYING AND CHAMPIONSHIPS

Rider:

All memberships and registrations/recordings must be correct and current at the time qualifying scores are earned and at the time of the championships.

Rider:

- Must have a USDF Participating* Membership (PM).
- Must have a USEF membership (Active or Life).

Horse:

- Must have a USDF Lifetime Horse Registration (LHR).
- Must have a USEF (Annual or Lifetime) Horse Recording.
- USDF horse registration and USEF horse recording must be in the name(s) of the current owner(s) or lessee(s).
- A horse is not required to have breed registry papers.
- Horses must be entered in qualifying and championship classes under their official recorded names and ownership as specified in USEF GR1102.3, and transfers of ownership or lease registrations must be completed in compliance with USEF rules GR1105 and GR1108 prior to the competition in order for the horse to compete under the name of the new owner or lessee. (USEF DR127.2)

Owner:

- Must have a USDF Participating or Business Membership and a USEF membership (Active or Life Membership or Annual or Life Recorded Farm/Business). If the horse has more than one owner, at least one owner must have both active USEF membership and active USDF Participating or Business Membership and must be the owner of record with USEF and USDF. For a business or farm to be the valid owner under this requirement, it must be listed as an owner of the horse with both USEF and USDF.
- * PMs are USDF members who join USDF directly. USDF Group Members (GM) are ineligible.

B. QUALIFYING CLASS AND CHAMPIONSHIP ELIGIBILITY

1. Having won a USEF/USDF Regional Championships three times (in any region over their lifetime), a horse/rider combination may no longer compete in USEF/USDF Regional Championship competition at that or a lower level (Grand Prix excepted), if they received the minimum qualifying score or higher for that division and level in the championship test per USEF DR127.5.
2. A horse may not be entered in more than one USEF/USDF Regional Championship at a particular level in the same calendar year.
3. USDF will presume qualified horse/rider combinations will compete in the region in which the rider resides as determined by the address associated with the rider's membership information on file as of July 1. Riders are NOT required to be a resident of the region to compete in that region's championship. Riders who wish to compete at Regional Championships in a region other than their region of residence, must submit a Change of Region Form. This form must be submitted with a \$25 fee prior to July 1. Change of Region Forms may be accepted from July 2 up to August 1, with a

fee of \$100; from August 2, up to the closing date of the championship region the rider is declaring for, with a fee of \$300. **No changes of region may be made after the closing date of the region in which a rider wishes to enter, for any reason.** In addition, all persons living outside of the United States, who intend to compete in a Regional Championship, must submit a Change of Region form and applicable fee to USDF to declare a region.

4. A rider may not compete in more than one Regional Championship competition in the same calendar year.
5. In the event a competitor is unable to produce copies of the USDF membership or lifetime horse registration documents required to enter a qualifying class, a USDF competition affidavit with appropriate fee may be completed and filed with the competition secretary. The affidavit and appropriate fee must be submitted to USDF by the competition secretary. Copies of the required memberships and registrations MUST be included with the championship entry. Affidavits will not be accepted for USEF or USDF membership or horse recording verification purposes for entry in championship classes.
6. Horses must be entered in qualifying and championship classes under their official recorded names and ownership as specified in USEF GR1102.3, and transfers of ownership or lease registrations must be completed in compliance with USEF rules GR1105 and GR1108 prior to the competition in order for the horse to compete under the name of the new owner or lessee. (USEF DR127.2)

E. CHAMPIONSHIP RULES

1. All Regional Championship competitions are considered Level 4. Please refer to USEF Dressage Level Requirements for specifics.
2. Each entry must designate the division being entered (open, adult amateur or junior/young rider) and must meet minimum percentage requirements for the championship division entered.
3. Cross entering open and junior/young rider divisions or open and adult amateur divisions for a horse/rider combination is permitted at adjacent levels. It is not permitted at the same level. Exception: freestyle or equivalent FEI Junior or FEI Young Rider levels.
4. If a rider intends to enter a Regional Championship as an adult amateur, the rider must be an adult by the current USEF definition (DR 119.3) and a current amateur by the USEF definition. (USEF GR1306, 1307)
5. If a rider intends to enter a championship as a junior/young rider, the rider must be a junior/young rider by the current USEF definition and her/his birth date must be on file with USDF by July 1 of the championship year.
6. Verification of USDF/USEF membership cards and horse recording and registration certificates must accompany championship entry (USDF PM for rider, USDF PM or BM for owner, etc.)
7. Under penalty of elimination, whips may not be carried in championship tests (Exception: Competitors riding sidesaddle may carry a whip no longer than 47.2 inches (120 cm), including lash, in USEF/USDF Championships.) An adjustable-length whip may not be carried by a mounted rider.
8. Under penalty of elimination, all championship tests must be ridden from memory. (USEF DR122.1)

9. The gate at "A" may be left open for every USEF/USDF championship ride. Decisions to either close the gate or leave it open must be consistent for all championship classes. Each Regional Championship competition management must publish in its official prize list if the gate will be closed in championship classes. (USEF DR126.2.f.5)
10. Under penalty of disqualification from all championship classes for the horse/rider combination, within 24 hours prior and at no time during a USEF/USDF Regional Championship competition may any horse entered in that Championship competition be ridden by anyone other than the rider entered in the Championship competition on that horse (exception: grooms riding on loose rein). Further, any horse entered in a championship competition, even entered at two levels, must be ridden by the same rider throughout competition. (USEF DR127.6) (NOTE: This applies throughout the entire competition, even after a horse has completed its championship classes.)
11. In the event of a tie (equality of total points) for champion and/or reserve champion in USEF/USDF championship classes, the collective marks after coefficients have been applied will determine first, second, and/or third or all three places; (i.e. when a tie for first place is broken by collective marks, tied competitors will receive first and second places, etc.). If collective marks are equal, the tie will remain unbroken (i.e. two first places will be awarded next third place, etc.). For ties in freestyle classes refer to USEF DR129.5 which states the highest score shall be declared the winner of the class. In the case of a tie, the higher artistic score shall determine the winner. Should the artistic mark be the same, the higher mark for harmony will decide. If still tied the higher mark for choreography will decide. Ties (equality of total points and total collective marks after coefficients have been applied) after second place will be broken by collective marks. Ties (equality of total points and total collective marks after coefficients have been applied) occurring in third through eight places will remain unbroken. In the case of a tie (equality of total points and total collective marks after coefficients have been applied) for champion, prize money designated for champion and reserve champion will be combined and divided equally between the two competitors.
12. Hors de Concours entries are not permitted in USEF/USDF championship classes. (USEF DR119.5)
13. In a USEF/USDF championship class, the horse/rider combination must obtain the necessary minimum percentage score to be named champion or reserve champion. (USEF DR123.7) If the highest placed horse/rider combination receives less than the minimum percentage, no championship awards or prize money will be issued, however an awards ceremony will be held for the entire class. In lieu of a champion and/or reserve neck sash, a first and/or second place ribbon will be awarded.
14. In USEF/USDF championship classes, a steward must be appointed to check the saddlery, bits and spurs, on both sides of each horse immediately after it has completed its test and has left the arena. Any discrepancy to the saddlery rules will result in immediate elimination. (USEF DR126.2.i.6)
15. A Registered (R) Dressage Technical Delegate (TD), who is a current Participating Member of USDF, is required to officiate at USEF/USDF championships. TDs for competitions offering qualifying and/or championship classes must investigate incidents of non-compliance and report violations to USEF. "R" Dressage TDs hired to officiate Regional Championship classes must be selected from outside the region. This applies only to the primary competition TD, who is the person responsible for filing the TD report for the competition with USEF. (See section H.3. c, and USEF GR1018.3 and DR127.3)
16. Entries in USEF/USDF dressage championship classes are limited to competitors who have met the qualifications, membership, horse recording and registration requirements, and deadlines outlined in USEF DR127 and published by USDF. Competitors who are properly qualified, whose completed entries are received by the closing date for a particular Regional Championship, and who have complied with all championship rules may not be denied entry into the Regional Championship classes for which they have qualified. Only one class per division and/or level may be held to determine USEF/USDF regional champions. (USEF DR127.7)
17. USEF/USDF championships classes may not be split. (USEF DR126.2a.4)
18. Championship classes for juniors and young riders must only be held on Friday, Saturday, and/or Sunday. Dressage Seat Medal Semi-Finals classes must be held on Saturday or Sunday. Juniors and young riders' entries (horse/rider combinations) are limited to entry in only two championship classes, excluding freestyle.
19. Except for freestyles, the FEI Junior Team Test, and FEI Young Rider Team test, championship classes at consecutive levels, for the same division, may not be held on the same day.
20. Ribbons and prizes can be distributed prior to the arrival at the awards ceremony. Award ceremony attendance is not mandatory. Riders should let show management know if they plan not to attend.
21. All horses competing in Regional Championships classes must be stabled on the competition grounds and must remain on the grounds for the duration of their participation in the event, from the time of arrival until the horse has finished competing in all classes. If the horse has been found to have left the grounds, and returned, it would be eliminated from championship classes, but not in non-championship classes. (USEF DR127.8)
22. For USEF/USDF freestyle championship classes, the competitor must provide the show with music for the freestyle. Acceptable formats/methods must be specified in the prize list. Formats must include CDs and/or digital files (MP3 and/or WAV.). Only one freestyle music per CD or digital file. All music must be submitted in the time frame specified in the prize list. Video files (MP4 or .mov) will not be accepted. Digital files must be sent and received electronically or on a thumb drive. Music should not be played via a competitor's cell phone, iPad, or any other personal mobile device. The competitor is required to bring a back-up copy (thumb drive or CD) with them to the competition. See also H.7.
23. The test ridden for national level USEF/USDF championship classes will be the highest test of the level.



2025 Great American Insurance Group/USDF Regional Dressage Championships

A single Regional Dressage Championship program organized by the United States Dressage Federation (USDF), and recognized by the United States Equestrian Federation, Inc. (USEF), will be held in each of the nine USDF regions. In addition, Alaska and Hawaii may each hold state championships if an official request from a Group Member Organization (GMO) is received by April 1 of the prior year. The Regional Championship Program Rules can be found on the USDF website at www.usdf.org. Please refer to the 2025 USDF Member Guide for the comprehensive list of rules and requirements for this program.

Membership/Registration Requirements for Qualifying and Championships

All memberships and registrations/recordings must be correct and current at the time qualifying scores are earned and at the time of the championships.

Rider:

- Must have a USDF Participating* Membership (PM).
- Must have a USEF membership (Active or Life).

Horse:

- Must have a USDF Lifetime Horse Registration (LHR).
- Must have a USEF (Annual or Lifetime) Horse Recording.
- USDF horse registration and USEF horse recording must be in the name(s) of the current owner(s) or lessee(s). A horse is not required to have breed registry papers.
- Horses must be entered in qualifying and championship classes under their official recorded names and ownership as specified in USEF GR1102.3, and transfers of ownership or lease registrations must be completed in compliance with USEF rules GR1105 and GR1108 prior to the competition in order for the horse to compete under the name of the new owner or lessee. (USEF DR127.2)

Owner:

- Must have a USDF Participating or Business Membership and a USEF membership (Active or Life Membership or Annual or Life Recorded Farm/Business). If the horse has more than one owner, at least one owner must have both active USEF membership and active USDF Participating or Business Membership and must be the owner of record with USEF and USDF. For a business or farm to be the valid owner under this requirement, it must be listed as an owner of the horse with both USEF and USDF.

* PMs are USDF members who join USDF directly. USDF Group Members (GM) are ineligible.

Minimum Qualifying Scores: One set of nationally-standardized qualifying scores has been established for all USEF/USDF Regional Championships, for Training Level through Grand Prix, in three divisions: open, adult amateur and junior/young rider.

The minimum percentages are as follows:

	OPEN	AA	JR/YR
Training Level (Test 3)	68%	63%	63%
First Level (Test 3)	66%	62%	62%
Second Level (Test 3)	64%	61%	61%
Third Level (Test 3)	62%	60%	60%
Fourth Level (Test 3)	62%	60%	60%
Prix St. Georges	62%	60%	60%
Intermediate I	62%	60%	60%
Intermediate II	62%	60%	60%
Grand Prix	60%	60%	60%
FREESTYLE	OPEN/Jr/YR	AA	
First Level	65%	65%	
Second Level	65%	65%	
Third Level	65%	65%	
Fourth Level	65%	65%	
Intermediate I	65%	65%	
Grand Prix	65%	65%	

USDF Membership Benefits: USDF is dedicated to education, the recognition of achievement, and promotion of dressage. For details on member benefits, including educational programs, awards, and other opportunities, refer to the *USDF Member Guide* or the USDF website at www.usdf.org.

**This
competition
is recognized
by USDF
for 2024**

Membership Requirements for USEF-licensed/USDF-recognized Competitions: Owners and riders, including foreign riders and owners who are not residents of the US, wishing to participate in a USEF-licensed/USDF-recognized competition as a rider or owner/lessee, must have either a USDF Group Membership (GM), Participating Membership (PM), or have a USDF Non-Member (NM) identification number and pay the USDF Non-Member (NM) fee. (Note: USDF Business Members can own horses but cannot compete as riders with their USDF Business Membership.)

Horses competing at USEF-licensed/USDF-recognized competitions must have either a USDF Horse Identification (HID) number or a USDF Lifetime Horse Registration (LHR). Proper credentials or verification certificates must be presented to the competition secretary.

Riders and owners wishing to participate in a USEF-licensed/USDF-recognized competition, and not able to present the competition secretary with verification of a USDF membership or NM identification, and USDF LHR or USDF HID, must complete a USDF Competition Affidavit Form and pay the \$5 affidavit filing fee. A copy of a completed affidavit form from another competition may also be used for verification purposes for up to 60 days. (Exception: Affidavits cannot be used at Great American Insurance Group/USDF Regional Dressage Championships.)

Exceptions:

- Horses competing only in Individual Breed Classes (IBCs) at DSHB competitions, sires and dams of horses in DSHB group classes, where those sires or dams are not actually competing in the same competition, horses competing only in breed restricted dressage or DSHB classes at Regular Competitions (e.g. all Arabian, all Friesian, or all Morgan classes), or in USDF Introductory Level tests, pas de deux or quadrille, are exempt from this requirement. Also exempt are horses ridden in leadline, exhibitions, games and races, classes for 4-H members, walk-trot, academy, and opportunity classes.
- Riders and owners/lessees competing only in classes which are exempt from the USDF HID requirements are also exempt from the USDF NM identification number and NM fee requirements. Also exempt are handlers of horses competing in DSHB In-Hand or Group classes.

Memberships Defined

Participating Membership (PM): A membership issued to an individual directly by USDF. The membership year is December 1 through November 30. PMs are available for 1-year (\$90), 5-years (\$360), or life (\$1,800). A USDF Youth Participating Membership (YPM) is available for individuals who have not reached their 21st birthday by December 1 of the current membership year (\$72). A PM allows the member to compete at USEF-licensed/USDF-recognized competitions and to participate as a rider and/or owner/lessee for all Adequan®/USDF Year-End Awards and the Great American Insurance Group/USDF Regional Dressage Championship program.

Group Membership (GM): A membership issued to an individual by USDF when the member name and dues are submitted to USDF through an affiliate Group Member Organization (GMO). The GM year begins December 1 and ends November 30. A GM allows the member to compete at USEF-licensed/USDF-recognized competitions and participate in the USDF Rider Awards Program and the USDF Regional Schooling Show Awards Program.

Business Membership (BM): A membership that runs December 1 through November 30 and is issued to a business or organization directly by USDF. The USDF BM (\$240) offers a wider variety of advertising benefits. BMs satisfy requirements of horse ownership only.

Non-Member (NM) Identification Number: For each USDF NM owner/lessee and USDF NM rider there will be a USDF NM fee of \$35 per competition that must be collected by the show secretary and submitted to USDF, along with the USDF Report of Fees document and the \$5 affidavit fee and Competition Affidavit Form if the person cannot provide a copy of their USDF NM card. Owners/lessees or riders exempt from the NM number requirements are also exempt from paying the USDF NM fee. If there are multiple owners of a horse and all are NMs, only one of the owners must pay the NM fee. If the horse has at least one owner who is a current USDF PM, GM, or BM there is no NM fee assessed. Competition management will be invoiced for all applicable USDF NM fees not received with the USDF post-competition paperwork, along with a report listing all USDF NMs. Competition management is then required to submit the NM fees within 30 days to the USDF. An individual with a USDF NM identification number is not eligible for any USDF membership benefits. Once a USDF NM number has been assigned, a USDF NM card can be obtained from the USDF website.

Horse Identification (HID) Number: A one-time tracking number for horses (\$35). Scores earned by a horse with an HID number will be recorded but will NOT be counted towards Adequan®/USDF Year-End Awards. A horse with an HID number is not eligible to compete in Great American Insurance Group/USDF Regional qualifying or championship classes. An HID number can be upgraded to a Lifetime Horse Registration (LHR) for a fee of \$80. If a horse has a USDF LHR it does not need an HID number. An HID number is a one-time fee that does not need to be renewed.

Lifetime Horse Registration (LHR): A horse with an LHR (\$115) is eligible for Adequan®/USDF Year-End Awards, and eligible to compete in Great American Insurance Group/USDF Regional qualifying and championship classes, assuming requirements for the owner and rider are met. If a horse has an LHR it does not need an HID number. An LHR does not need to be renewed.

How to Join USDF

Applications for USDF Participating Membership (PM), Business Membership (BM), Horse Identification (HID) number, and Lifetime Horse Registration (LHR) may be found in the following locations:

- On the USDF website: www.usdf.org. You can submit the application online or download the form.
- In the show office at USEF-licensed/USDF-recognized competitions classified by USEF as Dressage Competitions, and Regular Competitions which are open to all breeds.
- By calling or writing the USDF office at (859) 971-2277, 4051 Iron Works Parkway, Lexington, KY 40511

The effective date of membership is the date the form and correct fees are received in the USDF office or, if applying at a competition, the date accepted by the competition secretary, provided the application is signed and dated by the competition secretary, member, and/or horse owner on that same day.

Power YOUR Passion



At SmartPak, we know that riding is more than just a sport or hobby. Your horse gives you his all and deserves support that works as hard as he does. Power your passion with cutting-edge SmartSupplements™ designed to help him feel and perform his best. **We guarantee it.**

LEARN MORE at SmartPak.com/SmartSupplements or call our Horse Health Experts at 1-800-461-8898



LeMieux

LeMieux



Introducing Spruce
AW23 LOIRE COLLECTION

Shop online and at all major LeMieux stockists.

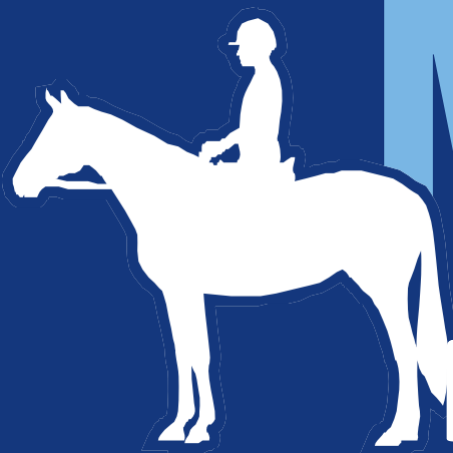
www.lemieux.com

USEF Competition Name: GAIG/USDF Region 3 Dressage Championships

USEF#: 342934

Competition Division(s) and Rating(s):

Level 4



MAAPP

MINOR ATHLETE ABUSE PREVENTION

LEARN ABOUT MAAP POLICIES



Safe Sport Training



Local Travel



One-On-One Interactions



Social Media & Electronic Communications



Read about these & more at usef.org/MAAPP

REPORT MAAP POLICY VIOLATIONS



usef.org/safe-sport/reporting

859-225-6915 or Text Anonymously 855-682-8733



General Regulations, Policies and Entry Specifications:

EVERY CLASS OFFERED HEREIN WHICH IS COVERED BY THE RULES AND SPECIFICATIONS OF THE CURRENT FEDERATION RULE BOOK WILL BE CONDUCTED AND JUDGED IN ACCORDANCE THEREWITH.

US EQUESTRIAN FEDERATION rules are in force from the moment show management allows access to the showgrounds. This includes conduct, correct saddlery and equipment, and attire.

Liability – Horses by their inherent nature present a risk. This show, the management, the USEF Licensee, and the facility will not be responsible for any loss or damage or injury to horses exhibited, or for any article of any kind or nature that may be lost or destroyed, or in any way injured. Each exhibitor will be responsible for any injury that may be occasioned to any person, whomsoever, by any horse owned or exhibited by said exhibitor and shall indemnify the show, the management, the show committee and volunteers, the USEF Licensee, the USEF and USDF, or any member thereof, against all claims and demands, of any nature or kind, that may grow out of any injury occasioned by any horses owned or exhibited by them, or arise from the negligence of the person in charge of any such horse. All horses exhibited in this show participate entirely at the owner's risk. Neither the Organizing Committee, show volunteers and staff, the facility or its owners, USEF or USDF or their members will be responsible for any damage, injury, or loss to persons, horses, or property of exhibitors or spectators. All owners and competitors are personally responsible for damages to third parties caused by themselves, their employees, their agents or their horses. They are therefore strongly advised to take out third-party insurance providing full coverage for participation in equestrian events at home and abroad, and to keep the policy up to date.

USEF Membership Statement (GR901.9)

Eventing Competitions at the Modified Level or above, Combined Driving Competitions at the Advanced Level, Dressage Competitions, Endurance Rides and Vaulting Competitions: (See GR828.4 of the Federation rules). Life, senior active and junior active members shall be eligible to participate in all classes at Regular Competitions, Eventing Competitions at the Modified Level or above and Combined Driving Competitions at the Advanced Level, Dressage, Reining and Vaulting Competitions and Endurance Rides. A non-member may participate as a handler, rider, driver, owner, lessee, or agent, at Regular Competitions, Eventing Competitions, Dressage Competitions, Reining Competitions and Combined Driving Competitions upon payment of a Show Pass fee. Participants in the following classes are exempted from the Requirements of this rule: 1) leadline; 2) exhibitions; 3) games and races; 4) classes for 4-H members; 5) walk trot (exception: Friesian performance FR231) and academy classes (academy classes are classes limited to horses used regularly in a lesson program); 6) USDF introductory level tests, pas de deux and quadrille classes; 7) NRHA Endorsed Reining Competitions. 8) Opportunity classes, 9) citizens of other nations who have proof, in English, of current membership in good standing of their own National Federation, 10) USEA beginner novicedivision; and 11) assistant handlers in Dressage Sport Horse Breeding classes.

Exhibitors should exercise extreme caution before medicating their horses and should be aware of the US EQUESTRIAN FEDERATION rules governing drugs and medications. Any questions about the use of certain medications and regarding Rule IV should be directed to the USEF Federation Equine Drugs and Medications Program, 956 King Avenue, Columbus, Ohio 43212-2655. (800) 633-2472, (614) 299-7707, FAX (614) 299-7706.

A **trainer** is defined as any adult who has responsibility for the horse on the competition grounds and must sign the entry form.

Protective Headgear Rule: From the time horses are officially admitted to the competition grounds by competition management, anyone mounted on a horse at any time on the competition grounds including non-competing riders, riders on non-competing horses and those competing in all classes and tests must wear protective headgear as defined by this rule and otherwise in compliance with GR801. Any rider violating this rule at any time must be immediately prohibited from further riding until such headgear is properly in place. Protective headgear is defined a riding helmet which meets or exceeds ASTM (American Society for Testing and Materials)/SEI (Safety Equipment Institute) standards for equestrian use and carries the SEI tag. The harness must be secured and properly fitted.

Musical Freestyles: Music must be on good quality CD and must be presented to the announcer at least two hours before scheduled ride. The schedule for sound checks will be posted at the show.

Bridle Numbers: Bridle numbers must be worn at all times when a horse is being exercised or ridden.

Show Management reserves the right to vary or add officials and refuse any entry for a cause; to disqualify any exhibitor and/or his or her horse for cause; to cause an exhibitor to forfeit his or her ribbons and winnings for cause; to return any entry and/or stall fee before or during the show for cause; all without being liable for damage or compensation. Show management reserves the right to make any changes deemed necessary for the safe and efficient conduct of this competition.

Important notice to all affected parties: Third parties may come upon the property or enter the facilities where any herein described or listed event will occur; provided, that this is a license to enter the premises, for the purpose of observing or participating in the event, but not otherwise, and such license to any individual is subject to revocation by the owner, lessee or organizer, and entry for any purpose other than granted herein, shall be deemed criminal trespass and subject to appropriate legal proceedings.

Attention Competitors: Each competitor is responsible for supplying the show management with the correct and required association numbers of USDF and/or USEF for the horse, owner, rider, coaches, and trainer, before the day(s) of the competition. The scores of competitors who fail to supply correct numbers may not count towards national awards. All entries for Open Classes are taken on a first come, first served basis. Only one horse-rider combination per entry form.

Sharps Disposal: Competition management may fine any individuals including trainers, owners, exhibitors, or their agents up to \$100 for improper disposal of needles or other sharp disposable instruments. Containers are located at the end of each barn aisle and within center aisles when center aisles are present within the barns.

Dogs: Facility rules require that dogs must be on a leash (not to exceed 6 feet in length) or suitably restrained in a tack stall/cage etc. Loose animals/animals left in vehicles in distress, etc. can and will be removed from the grounds at the owner's expense.

Membership/Registration Requirements for GAIG/USDF Qualifying Classes: Riders must be current USDF Participating members and active USEF members (Junior, Senior, or Life) in good standing. Horses must be USDF Lifetime registered and USEF Annual or Lifetime recorded. Horses with only an HID registration are not eligible. Owners must be current USDF Participating or Business members and active USEF members (Junior, Senior, or Life) in good standing. For current Great American/USDF Championship requirements, go to the USDF website (www.usdf.org).

Show Schedule and Ride Time Conflicts: It is the responsibility of the rider to inform the management of any time conflicts as soon as possible after receiving the schedule. Changes need to be requested in the show office by 3pm the day prior.

FEDERATION ENTRY AGREEMENT

By entering a Federation-licensed Competition and signing this entry blank as the Owner, Lessee, Trainer, Manager, Agent, Coach, Driver, Rider, Handler, Vaultor or Longeur and on behalf of myself and my principals, representatives, employees and agents, I agree that I am subject to the Bylaws and Rules of The United States Equestrian Federation, Inc. (the "Federation") and the local rules of the competition. I agree to be bound by the Bylaws and Rules of the Federation and of the competition. I will accept as final the decision of the Hearing Committee on any question arising under the Rules, and agree to release and hold harmless the competition, the Federation, their officials, directors and employees for any action taken under the Rules. I represent that I am eligible to enter and/or participate under the Rules, and every horse I am entering is eligible as entered. I also agree that as a condition of and in consideration of acceptance of entry, the Federation and/or the Competition may use or assign photographs, videos, audios, cablecasts, broadcasts, internet, film, new media or other likenesses of me and my horse taken during the course of the competition for the promotion, coverage or benefit of the competition, sport, or the Federation. Those likenesses shall not be used to advertise a product and they may not be used in such a way as to jeopardize amateur status. I hereby expressly and irrevocably waive and release any rights in connection with such use, including any claim to compensation, invasion of privacy, right of publicity, or to misappropriation. The construction and application of Federation rules are governed by the laws of the State of New York, and any action instituted against the Federation must be filed in New York State. **See USEF rule GR908.4.**

Safe Sport: All USEF Life and Senior Active members, as well as participants who have regular contact with minor athletes, are required to comply with the U.S. Center for SafeSport training requirement to be eligible to participate in the competition. All participants must adhere to the U.S. Center for SafeSport Code, USEF Safe Sport Policy, and the Minor Athlete Abuse Prevention Policies. More information about these can be found www.usef.org.

Current Rules: The rules may have changed from the current USEF Rule Book. It is the competitor's responsibility to check the current USEF Rule Book for any changes. Current rules can be found on www.usef.org.

2024

Official Use Only
BRIDLE #

COMPETITION NAME _____ COMPETITION DATES _____

NAME OF HORSE			PREVIOUS NAME (IF ANY)		USEF#	USDF#	FOR SALE
BREED	SEX	HEIGHT	COLOR	COGGINS DATE(ENCLOSED COPY)	SIRE	DAM	
DAM'S SIRE		COUNTRY OF BIRTH	YEAR OF BIRTH	BREEDER	FEI/PASSPORT #	GROOM	

RIDER/HANDLER _____

USEF# _____ USDF# _____ FEI/LOCAL# _____

ADDRESS _____

CITY/ST/ZIP _____

CELL PHONE _____ JR/YOUNG RIDER BIRTHDAY _____

EMAIL ADDRESS _____

RIDER CITIZENSHIP (IF NOT USA) _____

RIDER STATUS (CIRCLE ONE): JR/YG AA OPEN

OWNER _____

USEF# _____ USDF# _____ LOCAL# _____

ADDRESS _____

CITY/ST/ZIP _____

CELL PHONE _____

EMAIL ADDRESS _____

OWNER CITIZENSHIP (IF NOT USA) _____

TRAINER _____

USEF# _____ USDF# _____ LOCAL# _____

ADDRESS _____

CITY/ST/ZIP _____

CELL PHONE _____

EMAIL ADDRESS _____

COACH _____

USEF# _____ USDF# _____ LOCAL# _____

ADDRESS _____

CITY/ST/ZIP _____

CLASS No.	DIVISION	CLASS DESCRIPTION	QUAL Y/N	FEE\$

SUBTOTAL CLASS FEES AND QUALIFYING FEES	
USDF NON MEMBER FEE \$35 PER NON MEMBER	
OFFICE FEE AND/OR BRIDLE # FEE	
USEF HORSE FEES \$8 USEF FEE + \$ 5 DRUG FEE = \$23.00	
CDI HORSE FEES (CDI Only) \$8 USEF FEE + \$ 25 DRUG FEE = \$33.00	
IHP DISCIPLINE FEE \$35 (CDI ONLY)	
HORSE STALL FEE _____ STALL @ \$ _____/STALL	
TACK STALL FEE _____ STALL @ \$ _____/STALL	
BEDDING _____ BALES @ \$ _____/BALE	
NON COMPETING HORSE FEE	
GROUNDS FEE/HAUL IN FEE	
MAIL/FAX/EMAIL ENTRY FEE _____	
LATE FEE/CHANGE FEE _____	
BANK CHARGES FOR CC	
TOTAL FEES	

Please complete all three pages. Reverse MUST be SIGNED.

Stabling Information & Special Requests: Please list only ONE name (either individual or barn) for entire group (so we can get everyone together)

Group/Self	Tue	Wed	Thu	Fri	Sat	Sun	Mon
Stalls							
Tack Stalls							

Stable Group: _____ Contact: _____



FEDERATION ENTRY AGREEMENT

By entering a Federation-licensed Competition and signing this entry blank as the Owner, Lessee, Trainer, Manager, Agent, Coach, Driver, Rider, Handler, Vaulteur or Longeur and on behalf of myself and my principals, representatives, employees and agents, I agree that I am subject to the Bylaws and Rules of the United States Equestrian Federation, Inc. (the "Federation") and the local rules of _____ (Competition). I agree to be bound by the Bylaws and Rules of the Federation and of the competition. I will accept as final the decision of the Hearing Committee on any question arising under the Rules, and agree to release and hold harmless the competition, the Federation, their officials, directors and employees for any action taken under the Rules. I represent that I am eligible to enter and/or participate under the Rules, and every horse I am entering is eligible as entered. I also agree that as a condition of and in consideration of acceptance of entry, the Federation and/or the Competition may use or assign photographs, videos, audios, cable-casts, broadcasts, internet, film, new media or other likenesses of me and my horse taken during the course of the competition for the promotion, coverage or benefit of the competition, sport, or the Federation. Those likenesses shall not be used to advertise a product and they may not be used in such a way as to jeopardize amateur status. I hereby expressly and irrevocably waive and release any rights in connection with such use, including any claim to compensation, invasion of privacy, right of publicity, or to misappropriation. The construction and application of Federation rules are governed by the laws of the State of New York, and any action instituted against the Federation must be filed in New York State. See GR908.4.

If not currently a USEF Active Competing member or Subscriber, I acknowledge that I will be enrolled for no cost as a USEF Fan and my USEF Fan Account will continue to annually automatically renew in USEF's sole discretion. Additionally, I acknowledge that the benefits of a USEF Fan are subject to change without notice. USEF may in its sole discretion, at anytime, terminate my USEF Fan status. I acknowledge that I may opt out at anytime by going to My USEF Dashboard or calling (859) 810-8733.

BY SIGNING BELOW, I AGREE that I have read, understand, and agree to be bound by all applicable Federation Bylaws, rules, and policies including the USEF Safe Sport Policy and Minor Athlete Abuse Prevention Policies (MAAPP) as published at www.usef.org, as amended from time to time, as well as all terms and provisions of this Prize List. If I am signing and submitting this Agreement electronically, I acknowledge that my electronic signature shall have the same validity, force and effect as if I affixed my signature by my own hand.

I hereby agree to release, indemnify and hold harmless USDF, its instructors, officers, directors, agents, and volunteers from and against any and all loss, liability or damage arising from or because of, or in connection with, participation in this competition or related activities. I also hereby agree to release, indemnify and hold harmless the competition management, show committee and members, officers, directors, agents, and volunteers from and against any and all loss, liability or damage arising from or because of, or in connection with, participation in this competition or related activities.

RIDER/DRIVER/HANDLER/VAULTER/LONGEUR (mandatory)

Signature: _____

Print Name: _____

TRAINER (mandatory)

Signature: _____

Print Name: _____

OWNER/AGENT (mandatory)

Signature: _____

Print Name: _____

COACH (if applicable)

Signature: _____

Print Name: _____

Parent/Guardian Signature: (Required if Rider/Driver/Handler/Vaulteur/Longeur is a minor) _____

Print Parent//Guardian Name: _____ Emergency Contact Phone No. _____

Is Rider/Driver/Vaulteur a U.S. Citizen: Yes No



WAIVER AND RELEASE OF LIABILITY, ASSUMPTION OF RISK AND INDEMNITY AGREEMENT

For and in consideration of United States Equestrian Federation, Inc. dba US Equestrian ("USEF") allowing me, the undersigned, to participate in any capacity (including as a rider, driver, handler, vaulter, longeur, lessee, owner, agent, coach, official, trainer or volunteer) in a USEF sanctioned, licensed or approved event or activity, including but not limited to equestrian clinics, practices, shows, competitions and related or incidental activities and _____ ("USEF Event" or "USEF Events"); I, for myself, and on behalf of my spouse, children, heirs and next of kin, and any legal and personal representatives, executors, administrators, successors, and assigns, hereby agree to and make the following contractual representations pursuant to this Agreement (the "Agreement"):

A. RULES AND REGULATIONS: I hereby agree that I have read, understand, and agree to be bound by all applicable Federation Bylaws, rules, and policies including the USEF Safe Sport Policy and Minor Athlete Abuse Prevention Policies (MAAPP) as published at www.usef.org, as amended from time to time.

B. ACKNOWLEDGMENT OF RISK: I knowingly, willingly, and voluntarily acknowledge the inherent risks associated with the sport of equestrian and know that horseback riding and related equestrian activities are inherently dangerous, and that participation in any USEF Event involves risks and dangers including, without limitation, the potential for serious bodily injury (including broken bones, head or neck injuries), sickness and disease (including communicable diseases), trauma, pain & suffering, permanent disability, paralysis and death; loss of or damage to personal property (including my mount & equipment) arising out of the unpredictable behavior of horses; exposure to extreme conditions and circumstances; accidents involving other participants, event staff, volunteers or spectators; contact or collision with other participants and horses, natural or manmade objects; adverse weather conditions; facilities issues and premises conditions; failure of protective equipment (including helmets); inadequate safety measures; participants of varying skill levels; situations beyond the immediate control of the USEF Event organizers and competition management; and other undefined, not readily foreseeable and presently unknown risks and dangers ("Risks").

WARNING:

Under Florida law, an equine activity sponsor or equine professional is not liable for an injury to, or the death of, a participant in equine activities resulting from the inherent risks of equine activities.

C. ASSUMPTION OF RISK: I understand that the aforementioned Risks may be caused in whole or in part or result directly or indirectly from the negligence of my own actions or inactions, the actions or inactions of others participating in the USEF Events, or the negligent acts or omissions of the Released Parties defined below, and I hereby voluntarily and knowingly assume all such Risks and responsibility for any damages, liabilities, losses, or expenses that I incur as a result of my participation in any USEF Events. I also agree to be responsible for any injury or damage caused by me, my horse, my employees or contractors under my direction and control at any USEF Event.

D. WAIVER AND RELEASE OF LIABILITY, HOLD HARMLESS AND INDEMNITY: In conjunction with my participation in any USEF Event, I hereby release, waive and covenant not to sue, and further agree to indemnify, defend and hold harmless the following parties: USEF, USEF Recognized Affiliate Associations, the United States Olympic & Paralympic Committee (USOPC), USEF clubs, members, Event participants (including athletes/riders, coaches, trainers, judges/officials, and other personnel), the Event owner, licensee, and competition managers; the promoters, sponsors, or advertisers of any USEF Event; any charity or other beneficiary which may benefit from the USEF Event; the owners, managers, or lessors of any facilities or premises where a USEF Event may be held; and all directors, officers, employees, agents, contractors, and volunteers of any of the aforementioned parties (Individually and Collectively, the "Released Parties" or "Event Organizers"), with respect to any liability, claim(s), demand(s), cause(s) of action, damage(s), loss, or expense (including court costs and reasonable attorney fees) of any kind or nature ("Liability") which may arise out of, result from, or relate in any way to my participation in the USEF Events, including claims for Liability caused in whole or in part by the negligent acts or omissions of the Released Parties.

E. COMPLETE AGREEMENT AND SEVERABILITY CLAUSE: This Agreement represents the complete understanding between the parties regarding these issues and no oral representations, statements or inducements have been made apart from this Agreement. If any provision of this Agreement is held to be unlawful, void, or for any reason unenforceable, then that provision shall be deemed severable from this Agreement and shall not affect the validity and enforceability of any remaining provisions.

I HAVE CAREFULLY READ THIS DOCUMENT IN ITS ENTIRETY, UNDERSTAND ALL OF ITS TERMS AND CONDITIONS, AND KNOW IT CONTAINS AN ASSUMPTION OF RISK, RELEASE AND WAIVER FROM LIABILITY, AS WELL AS A HOLD HARMLESS AND INDEMNIFICATION OBLIGATIONS.

By signing below, that I have read, understand, and agree to be bound by all applicable Federation Bylaws, rules, and policies including the USEF Safe Sport Policy and Minor Athlete Abuse Prevention Policies (MAAPP) as published at www.usef.org, as amended from time to time, as well as all terms and provisions of this Prize List. If, despite this Agreement, I, or anyone on my behalf or the minor's behalf, makes a claim for Liability against any of the Released Parties, I will indemnify, defend and hold harmless each of the Released Parties from any such Liabilities as the result of such claim.

The parties agree that this agreement may be electronically signed. The parties agree that the electronic signatures appearing on this agreement are the same as handwritten signatures for the purposes of validity, enforceability, and admissibility.

RIDER/DRIVER/HANDLER/VAULTER/LONGEUR OWNER TRAINER OFFICIAL STAFF VOLUNTEER COACH (IF APPLICABLE)

Signature: _____ Date: _____ Print Name: _____

Parent/Guardian Signature: (Required if Rider/Driver/Handler/Vaulter/Longeur is a minor) _____ Date: _____

Print Parent//Guardian Name: _____ Emergency Contact Phone No. _____