



WORLD
EQUESTRIAN CENTER®

NEWS

DECEMBER 11-15, 2024 WEC WINTER CLASSIC 3 | YOUR OFFICIAL SOURCE FOR EVENTS, ENTERTAINMENT AND SERVICES

FEATURE CLASSES

Thursday, December 12

\$10,000 Welcome Stake
Standlee Sanctuary

Friday, December 13

\$1,500 USHJA Pony Hunter Derby
R+L Annex

\$15,000 USHJA National Hunter Derby Non-Pro 3'
R+L Arena

\$15,000 USHJA National Hunter Derby Open 3'
R+L Arena

Saturday, December 14

\$3,500 Non-Pro 2'6" Hunter Derby
R+L Annex

\$10,000 Futures Prix
Standlee Sanctuary

\$30,000 Kentucky Performance Products Grand Prix
Standlee Sanctuary

ENTERTAINMENT AND ACTIVITIES



Now Accepting Stall Reservations for Upcoming Shows



WEC Christmas in the Midwest	12/18-12/22
WEC Winter Classic 5	1/8-1/12
WEC Winter Classic 6	1/15-1/19
WEC Winter Classic 7	1/22-1/26
WEC Winter Classic 8	1/29-2/2
WEC Winter Classic 9	2/5-2/9
WEC Winter Classic 10	2/12-2/16
WEC Winter Classic 11	2/19-2/23
WEC Winter Classic 12	2/26-3/2

YOUTH MINISTRY

THURSDAY AT 7PM



LOCATED IN THE RIDER'S LOUNGE

Music | Food | Fun | Devotions

THE PADDOCK CLUB



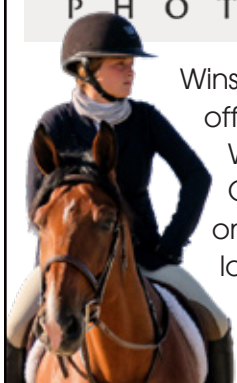
Kitchen: Wed - Thurs: 4pm-9pm
Fri - Sat: 4pm-10pm
Bar: Wed - Sat: 4pm-11pm

WEC Calendar

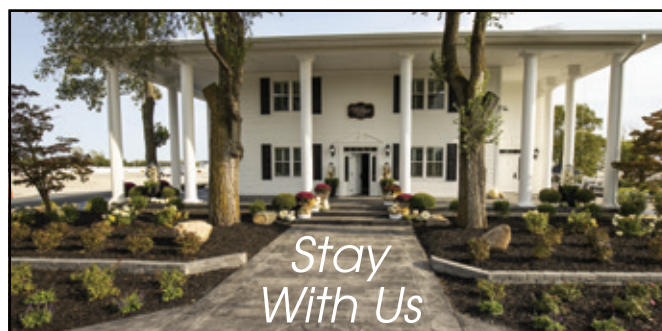
The Winter Classic Series is full of wonderful events for everyone! Scan the QR code to view our calendar of events.



WINSLOW PHOTOGRAPHY



Winslow Photography is the official photographer of the WEC - Wilmington Winter Classic Series. Visit them on-site during the horse show located in the R+L Hallway or view your photos online at winslowphoto.com



Stay With Us



The Wilbur Estate is a stunning plantation-style mansion with five elegant luxury suites. Each suite offers all the comforts of home, including a completely outfitted custom kitchen, upscale furnishings, linens and beautiful art.

The spacious porch and garden provide guests with a tranquil place to relax after a day of showing. Accommodations are centrally located on the showgrounds, just steps from arenas, stabling and The Paddock Club. VIP parking is included in your stay.



Visit wec.net or call **937.382.0985**, option 3 to reserve your stay



DRAGONFLY
academy at wec



is proud to offer daily spaces at
Dragonfly Academy

Let us help you with your academic plans while competing at WEC.

Testing and proctoring services available!

Location is within a 1/2 mile of the World Equestrian Center.

Hourly and daily rates available with food/snacks and extra activities.*

Open 9am-3pm with additional hours available if scheduled and reserved.

Please contact WECDragonflyAcademy@gmail.com for more information and schedule your student today!

*at additional cost.



World Equestrian Center Security services are available 24/7 during events.

If you need to report suspicious activity or reach WEC Security for any reason, please call **937.382.7878**.



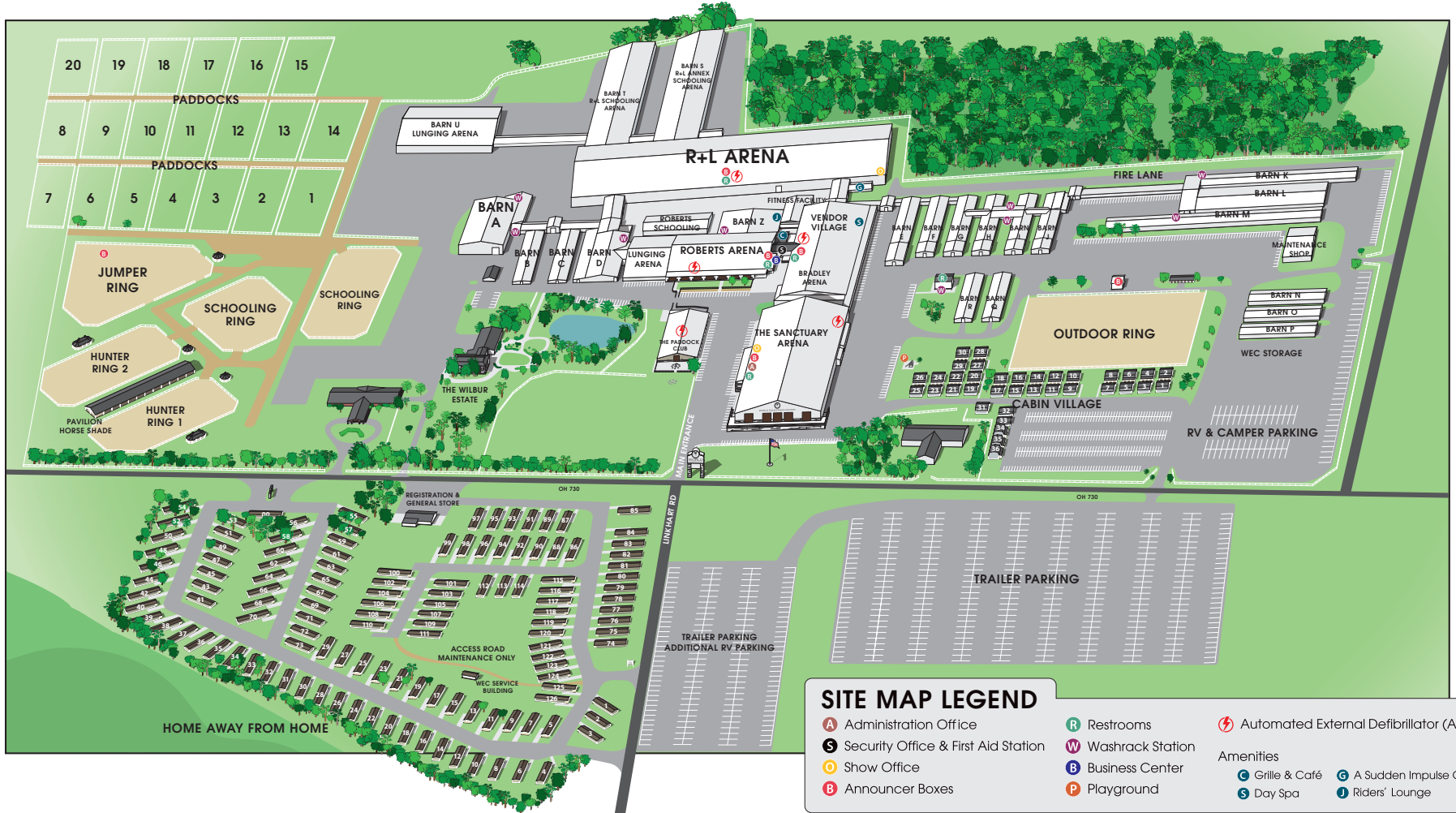
WELCOME EVENT SPONSORS



WELCOME EVENT VENDORS



FACILITY MAP



SITE MAP LEGEND

A Administration Office	R Restrooms	⚡ Automated External Defibrillator (AED)
S Security Office & First Aid Station	W Washrack Station	☕ Grille & Café
O Show Office	B Business Center	G A Sudden Impulse Gift Shop
B Announcer Boxes	P Playground	D Day Spa
		L Riders' Lounge

LODGING

Find comfort and relaxation just steps from the horse show in World Equestrian Center's lodging accommodations.

On-site lodging offers convenience, along with all of the comforts of home, including plush furniture, cable TV, free Wi-Fi and plenty of room for pets.

World Equestrian Center offers several lodging options, including charming cabins, spacious Home Away from Home units, RV hookups and The Wilbur Estate.

Visit wec.net or call **937.382.0985**, option 3 to reserve your stay.



Shop, Leisure and Services

The Paddock Club

Kitchen: Wed - Thurs: 4pm-9pm
Fri - Sat: 4pm-10pm
Bar: Wed - Sat: 4pm-11pm

Sugar Shack

Closed Monday & Tuesday
Wed - Sun: 10am-6pm

Shaggy Chic Service Dog Wash

Vendor Village
Open 24/7

Dark Horse Coffee Co.

Proudly serving Starbucks®
Closed Monday
Tues - Sun: 6:30am-5pm

International Grille & Café

Closed Monday
Tues: 6:30am-5pm
Wed - Sun: 6:30am-Show closing

A Sudden Impulse

Official WEC merchandise and embroidery
Wed - Sun: 9am-5:30pm
*Sunday - closing time may vary
suddenimpulse.com

A Bit of Class Salon & Day Spa

Diane Bayless | Stylist | Text 937.728.4984
Katrina Hale | Licensed Massage Therapist
Text 937.992.3695