



# WORLD EQUESTRIAN CENTER®

# NEWS

MARCH 12-16, 2025 WEC WINTER CLASSIC 14 | YOUR OFFICIAL SOURCE FOR EVENTS, ENTERTAINMENT AND SERVICES

## FEATURE CLASSES

Thursday, March 13

**\$10,000 Welcome Stake**  
Standlee Sanctuary

Friday, March 14

**\$1,500 USHJA Pony Hunter Derby**  
R+L Annex

**\$15,000 USHJA National Hunter Derby Non-Pro 3'**  
R+L Arena

**\$15,000 USHJA National Hunter Derby Open 3'**  
R+L Arena

Saturday, March 15

**\$3,500 Non-Pro 2'6" Hunter Derby**  
R+L Annex

**\$10,000 Futures Prix**  
Standlee Sanctuary

**\$30,000 Grand Prix**  
Standlee Sanctuary

## ENTERTAINMENT AND ACTIVITIES

### St. Patrick's Themed Trivia

Friday, March 14 | 6pm

What do you know about St. Patrick's Day?

The Paddock Club

### St. Patrick's Themed BRAIDING CONTEST

Saturday, March 15 | 11am-6pm

Bring your lucky charm to Vendor Village for the contest!

### Now Accepting Stall Reservations for ALL 2025 Shows



WEC Winter Classic 15 .....	3/19-3/23
WEC Winter Classic 16 .....	3/26-3/30
WEC Winter Classic 17 .....	4/2-4/6
WEC Spring I .....	5/21-5/25
WEC Spring II .....	5/28-6/1
WEC Summer Schooling Show 1 .....	6/13-6/15
WEC Summer Schooling Show 2 .....	6/27-6/29
WEC Summer I .....	7/9-7/13

### THE PADDOCK CLUB



Kitchen: Wed - Thurs: 4pm-9pm | Fri - Sat: 4pm-10pm  
Bar: Wed - Sat: 4pm-11pm



WEC - Wilmington Summer Schooling Show Series  
Reserve Stalls for \$85

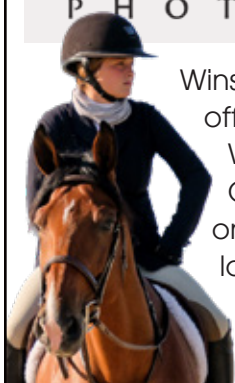
June 13-15 | July 25-27 | August 29-31  
June 27-29 | August 22-24

### WEC Calendar

The Winter Classic Series is full of wonderful events for everyone! Scan the QR code to view our calendar of events.



## WINSLOW PHOTOGRAPHY



Winslow Photography is the official photographer of the WEC - Wilmington Winter Classic Series. Visit them on-site during the horse show located in the R+L Hallway or view your photos online at [winslowphoto.com](http://winslowphoto.com)



DRAGONFLY academy at wec



is proud to offer daily spaces at **Dragonfly Academy**

Let us help you with your academic plans while competing at WEC.

Testing and proctoring services available!

Location is within a 1/2 mile of the World Equestrian Center.

Hourly and daily rates available with food/snacks and extra activities.\*  
Open 9am-3pm with additional hours available if scheduled and reserved.

Please contact [WECDragonflyAcademy@gmail.com](mailto:WECDragonflyAcademy@gmail.com) for more information and schedule your student today!

\*at additional cost.

## YOUTH MINISTRY



THURSDAYS AT 7PM

LOCATED IN THE RIDER'S LOUNGE

Music | Food | Fun | Devotions

NOW AVAILABLE

VOL IV | 2024

Pick up your FREE copy in the show office or read online at [wec.net](http://wec.net)!

WORLD EQUESTRIAN CENTER MAGAZINE

WORLD'S GREATEST PLACES



World Equestrian Center Security services are available 24/7 during events.

If you need to report suspicious activity or reach WEC Security for any reason, please call **937.382.7878**.



## WELCOME EVENT SPONSORS



Are you interested in speaking with our sponsorship team at WEC - Wilmington? Contact adam.bray@wec.net for more information.

## WELCOME EVENT VENDORS



## LODGING

Find comfort and relaxation just steps from the horse show in World Equestrian Center's lodging accommodations.

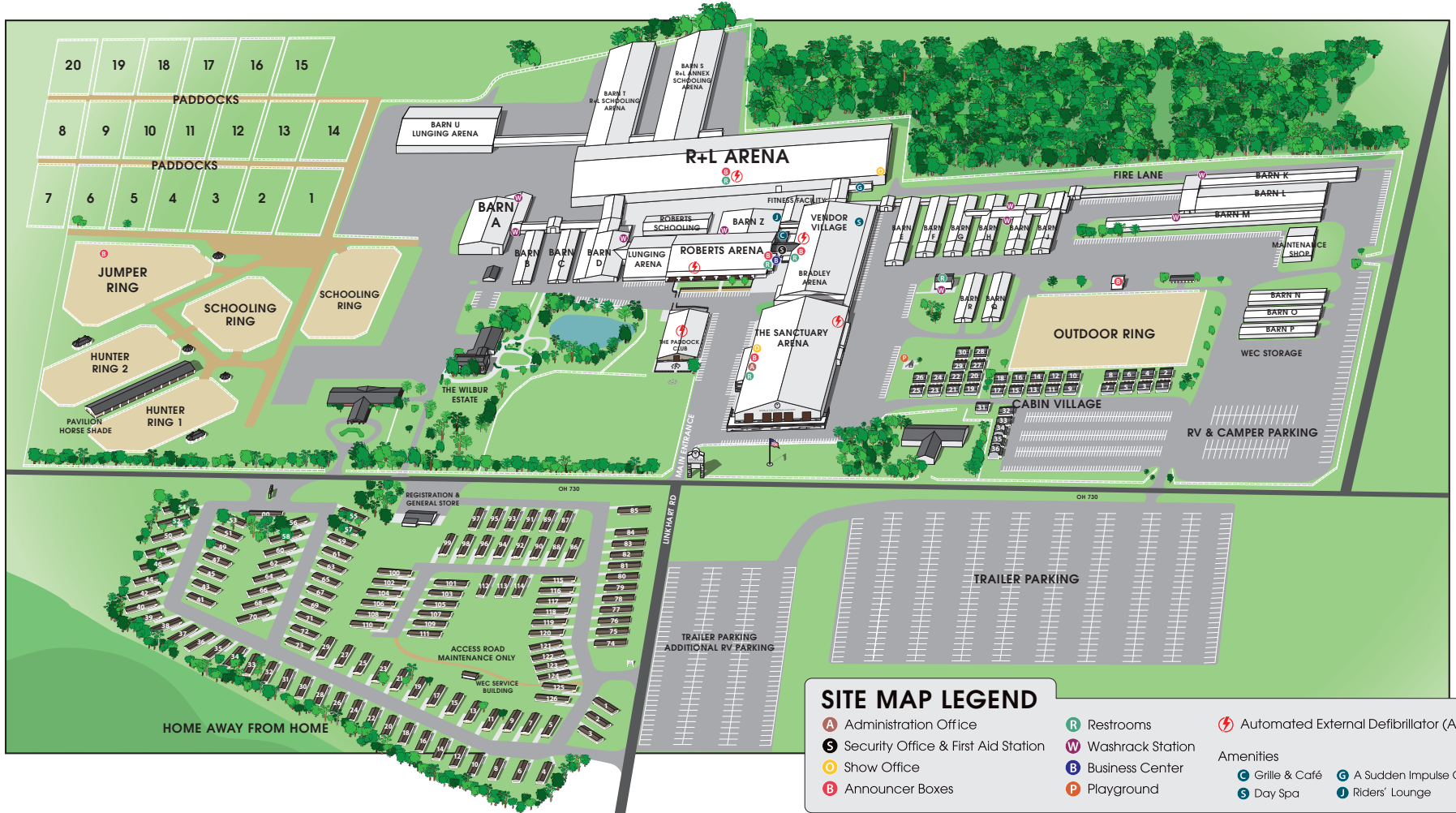
On-site lodging offers convenience, along with all of the comforts of home, including plush furniture, cable TV, free Wi-Fi and plenty of room for pets.

World Equestrian Center offers several lodging options, including charming cabins, spacious Home Away from Home units, RV hookups and The Wilbur Estate.

Visit [wec.net](http://wec.net) or call 937.382.0985, option 3 to reserve your stay.



## FACILITY MAP



### Shop, Leisure and Services

#### The Paddock Club

Kitchen: Wed - Thurs: 4pm-9pm  
Fri - Sat: 4pm-10pm  
Bar: Wed - Sat: 4pm-11pm

#### Sugar Shack

Closed Monday & Tuesday  
Wed - Sun: 10am-6pm

#### Shaggy Chic Service Dog Wash

Vendor Village  
Open 24/7

#### Dark Horse Coffee Co.

Proudly serving Starbucks®  
Closed Monday  
Tues - Sun: 6:30am-5pm

#### International Grille & Café

Closed Monday  
Tues: 6:30am-5pm  
Wed - Sun: 6:30am-Show closing

#### A Sudden Impulse

Official WEC merchandise and embroidery  
Wed - Sun: 9am-5:30pm  
\*Sunday - closing time may vary  
[suddenimpulse.com](http://suddenimpulse.com)

#### A Bit of Class Salon & Day Spa

Diane Bayless | Stylist | Text 937.728.4984  
Katrina Hale | Licensed Massage Therapist  
Text 937.992.3695