



WORLD EQUESTRIAN CENTER®

NEWS

APRIL 2-6, 2025 WEC WINTER CLASSIC 17 | YOUR OFFICIAL SOURCE FOR EVENTS, ENTERTAINMENT AND SERVICES

FEATURE CLASSES

Thursday, April 3

\$10,000 OSU Galbreath Equine Welcome Stake
Standlee Sanctuary

Friday, April 4

\$1,500 USHJA Pony Hunter Derby
R+L Annex

\$15,000 USHJA National Hunter Derby Non-Pro 3'
R+L Arena

\$15,000 Hagyard USHJA National Hunter Derby Open 3'
R+L Arena

Saturday, April 5

\$3,500 Non-Pro 2'6" Hunter Derby
R+L Annex

\$10,000 Futures Prix
Standlee Sanctuary

\$30,000 Shires Equestrian Grand Prix
Standlee Sanctuary

Now Accepting Stall Reservations for ALL 2025 Shows



WEC Spring I.....	5/21-5/25
WEC Spring II.....	5/28-6/1
WEC Summer Schooling Show 1.....	6/13-6/15
WEC Summer Schooling Show 2.....	6/27-6/29
WEC Summer I.....	7/9-7/13
WEC Summer II.....	7/16-7/20
WEC Summer Schooling Show 3.....	7/25-7/27

WEC Calendar

The Winter Classic Series is full of wonderful events for everyone! Scan the QR code to view our calendar of events.



ENTERTAINMENT AND ACTIVITIES



RED LIGHT GREEN LIGHT EQUESTRIAN STYLE

SATURDAY APRIL 5 AFTER THE GRAND PRIX

Sanctuary Warm-Up Ring Prizes Available

Note-Saddle is optional during the game.



WEC - Wilmington Summer Schooling Show Series
Reserve Stalls for \$85

June 13-15
June 27-29

July 25-27
August 22-24

August 29-31

Circuit Awards are available to pick up at the Show Office during Winter Classic 17!

Find results on horseshowing.com

THE PADDOCK CLUB™



Kitchen: Wed - Thurs: 4pm-9pm | Fri - Sat: 4pm-10pm
Bar: Wed - Sat: 4pm-11pm

YOUTH MINISTRY

THURSDAY AT 7PM



LOCATED IN THE RIDER'S LOUNGE

Music | Food | Fun | Devotions



is proud to offer daily spaces at **Dragonfly Academy**

Let us help you with your academic plans while competing at WEC.

Testing and proctoring services available!

Location is within a 1/2 mile of the World Equestrian Center.

Hourly and daily rates available with food/snacks and extra activities.*
Open 9am-3pm with additional hours available if scheduled and reserved.

Please contact WECDragonflyAcademy@gmail.com for more information and schedule your student today!

*at additional cost.



Stay With Us



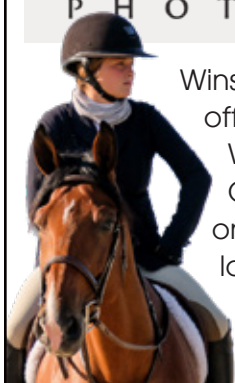
The Wilbur Estate is a stunning plantation-style mansion with five elegant luxury suites. Each suite offers all the comforts of home, including a completely outfitted custom kitchen, upscale furnishings, linens and beautiful art.

The spacious porch and garden provide guests with a tranquil place to relax after a day of showing. Accommodations are centrally located on the showgrounds, just steps from arenas, stabling and The Paddock Club. VIP parking is included in your stay.



Visit wec.net or call **937.382.0985**, option 3 to reserve your stay

WINSLOW PHOTOGRAPHY



Winslow Photography is the official photographer of the WEC - Wilmington Winter Classic Series. Visit them on-site during the horse show located in the R+L Hallway or view your photos online at winslowphoto.com

Church Service | Sunday, April 6
7:30 am - Chapel



World Equestrian Center Security services are available 24/7 during events.

If you need to report suspicious activity or reach WEC Security for any reason, please call **937.382.7878**.

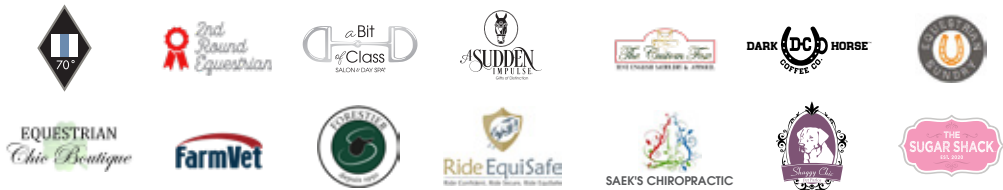


WELCOME EVENT SPONSORS



Are you interested in speaking with our sponsorship team at WEC - Wilmington? Contact adam.bray@wec.net for more information.

WELCOME EVENT VENDORS



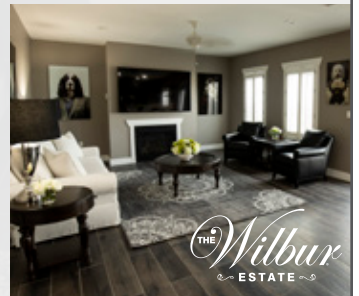
LODGING

Find comfort and relaxation just steps from the horse show in World Equestrian Center's lodging accommodations.

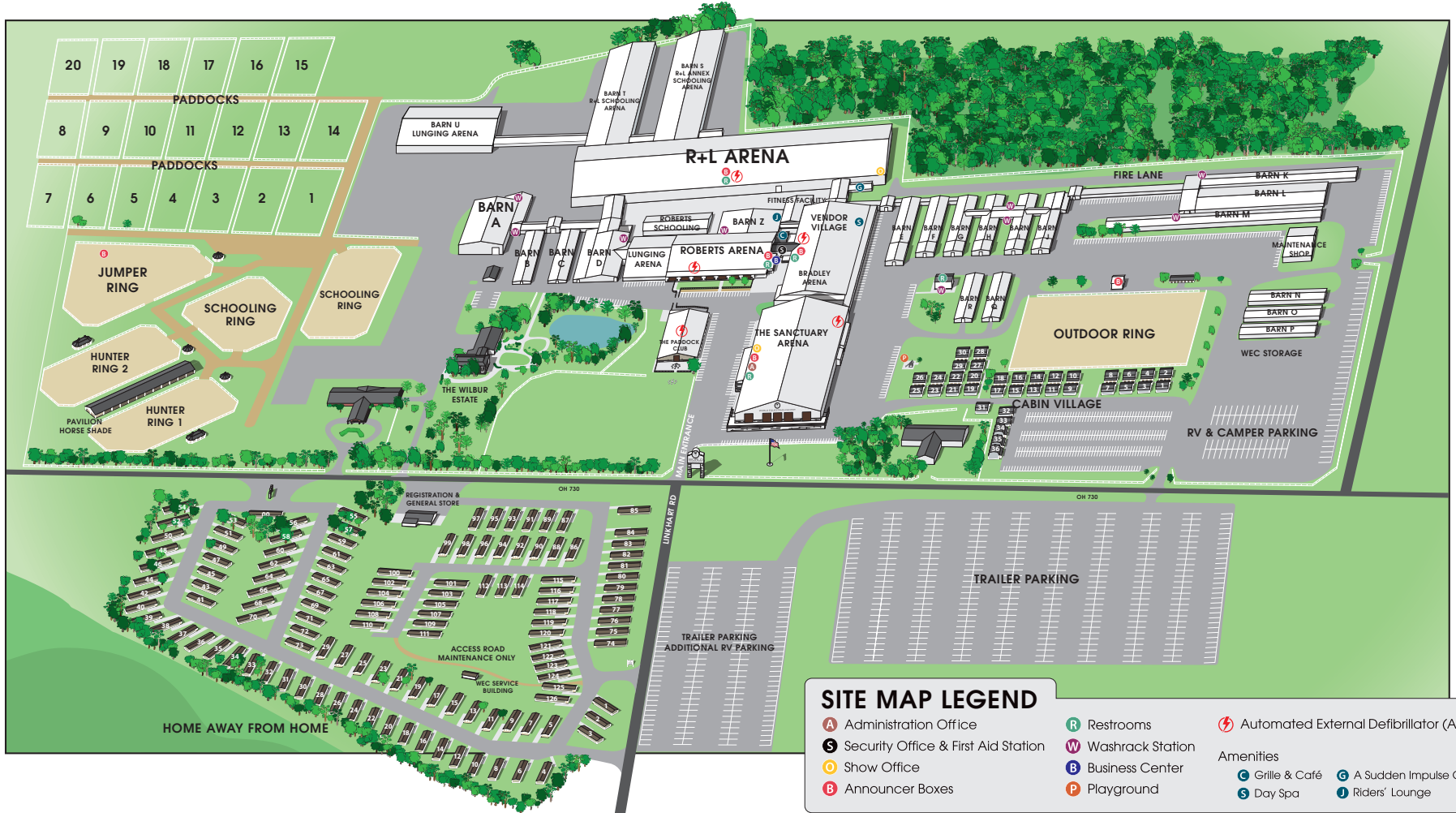
On-site lodging offers convenience, along with all of the comforts of home, including plush furniture, cable TV, free Wi-Fi and plenty of room for pets.

World Equestrian Center offers several lodging options, including charming cabins, spacious Home Away from Home units, RV hookups and The Wilbur Estate.

Visit wec.net or call 937.382.0985, option 3 to reserve your stay.



FACILITY MAP



Shop, Leisure and Services

The Paddock Club

Kitchen: Wed - Thurs: 4pm-9pm
Fri - Sat: 4pm-10pm
Bar: Wed - Sat: 4pm-11pm

Sugar Shack

Closed Monday & Tuesday
Wed - Sun: 10am-6pm

Shaggy Chic Service Dog Wash

Vendor Village
Open 24/7

Dark Horse Coffee Co.

Proudly serving Starbucks®
Closed Monday
Tues - Sun: 6:30am-5pm

International Grille & Café

Closed Monday
Tues: 6:30am-5pm
Wed - Sun: 6:30am-Show closing

A Sudden Impulse

Official WEC merchandise and embroidery
Wed - Sun: 9am-5:30pm
*Sunday - closing time may vary
suddenimpulse.com

A Bit of Class Salon & Day Spa

Diane Bayless | Stylist | Text 937.728.4984
Katrina Hale | Licensed Massage Therapist
Text 937.992.3695