



WORLD EQUESTRIAN CENTER®

NEWS

JULY 16-20, 2025 WEC SUMMER II | YOUR OFFICIAL SOURCE FOR EVENTS, ENTERTAINMENT AND SERVICES

FEATURE CLASSES

Thursday, July 17

\$10,000 Top Bedding Welcome Stake
Outdoor Jumper Arena

Friday, July 18

\$1,500 WEC Pony Hunter Derby
Hunter 2

\$10,000 USHJA National Hunter Derby Open 3'

Main Hunter

\$10,000 USHJA National Hunter Derby Non-Pro 3'

Main Hunter

\$12,500 WEC 3'6" Derby

Main Hunter

Saturday, July 19

\$3,500 Non-Pro Hunter Derby 2'6"
Hunter 2

\$10,000 CWD Futures Prix

Outdoor Jumper Arena

\$35,000 Grand Prix

Outdoor Jumper Arena

\$10,000 WEC Junior/Amateur Mini Prix 1.20m

Outdoor Jumper Ring

Sunday, July 20

\$7,500 1.40m Jumper Stake Outdoor Jumper Ring

WEC Calendar

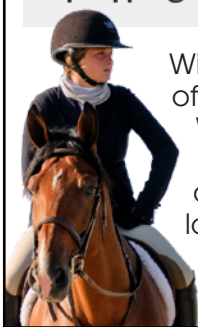
The Summer Classic Series is full of wonderful events for everyone! Scan the QR code to view our calendar of events.



Now Accepting Stall Reservations for ALL 2025 Shows

WEC Summer II 7/16-7/20
WEC Summer Schooling Show 3..... 7/25-7/27
WEC Summer III.....8/6-8/10
WEC Summer Schooling Show 4.....8/22-8/24
WEC Summer Schooling Show 5.....8/29-8/31

WINSLOW PHOTOGRAPHY



Winslow Photography is the official photographer of the WEC – Wilmington Summer Series. Visit them on-site during the horse show located in the R+L Hallway or view your photos online at winslowphoto.com

Church Service | Sunday, July 13
7:30 am – Chapel

ENTERTAINMENT AND ACTIVITIES

MECHANICAL BULL RIDING EVENT

JULY 19, 5PM - 10PM

THE PADDOCK CLUB



HOW LONG CAN YOU RIDE?

THE PADDOCK CLUB®



Kitchen: Wed - Sat: 5pm-9pm

Bar: Wed - Sat: 4pm-11pm



Stay
With Us



The Wilbur Estate is a stunning plantation-style mansion with five elegant luxury suites. Each suite offers all the comforts of home, including a completely outfitted custom kitchen, upscale furnishings, linens and beautiful art.

THE *Wilbur*
ESTATE

The spacious porch and garden provide guests with a tranquil place to relax after a day of showing. Accommodations are centrally located on the showgrounds, just steps from arenas, stabling and The Paddock Club. VIP parking is included in your stay.

Visit wec.net or call **937.382.0985**, option 3 to reserve your stay

WEC – Wilmington Standlee Summer Schooling Show Series

Reserve Stalls for \$85



July 25-27

August 22-24

August 29-31

WEC MAGAZINE

VOL I | 2025

NOW
AVAILABLE

Pick up
your
FREE
copy in
the show
office
or read
online at
wec.net!

WORLD
EQUESTRIAN CENTER®
MAGAZINE



Quality. Class. Distinction.



DRAGONFLY
academy at wec



is proud to offer daily spaces at
Dragonfly Academy

Let us help you with your academic plans while competing at WEC.

Testing and proctoring services available!

Location is within a 1/2 mile of the World Equestrian Center.

Hourly and daily rates available with food/snacks and extra activities.*
Open 9am-3pm with additional hours available if scheduled and reserved.

Please contact WECDragonflyAcademy@gmail.com for more information and schedule your student today!

*at additional cost.



World Equestrian Center Security services are available 24/7 during events. If you need to report suspicious activity or reach WEC Security for any reason, please call **937.382.7878**.



WELCOME EVENT SPONSORS

Are you interested in speaking with our sponsorship team at WEC - Wilmington?
Contact adam.bray@wec.net for more information.

LODGING

Find comfort and relaxation just steps from the horse show in World Equestrian Center's lodging accommodations.

On-site lodging offers convenience, along with all of the comforts of home, including plush furniture, cable TV, free Wi-Fi and plenty of room for pets.

World Equestrian Center offers several lodging options, including charming cabins, spacious Home Away from Home units, RV hookups and The Wilbur Estate.

Visit wec.net or call 937.382.0985, option 3 to reserve your stay.



CABIN VILLAGE



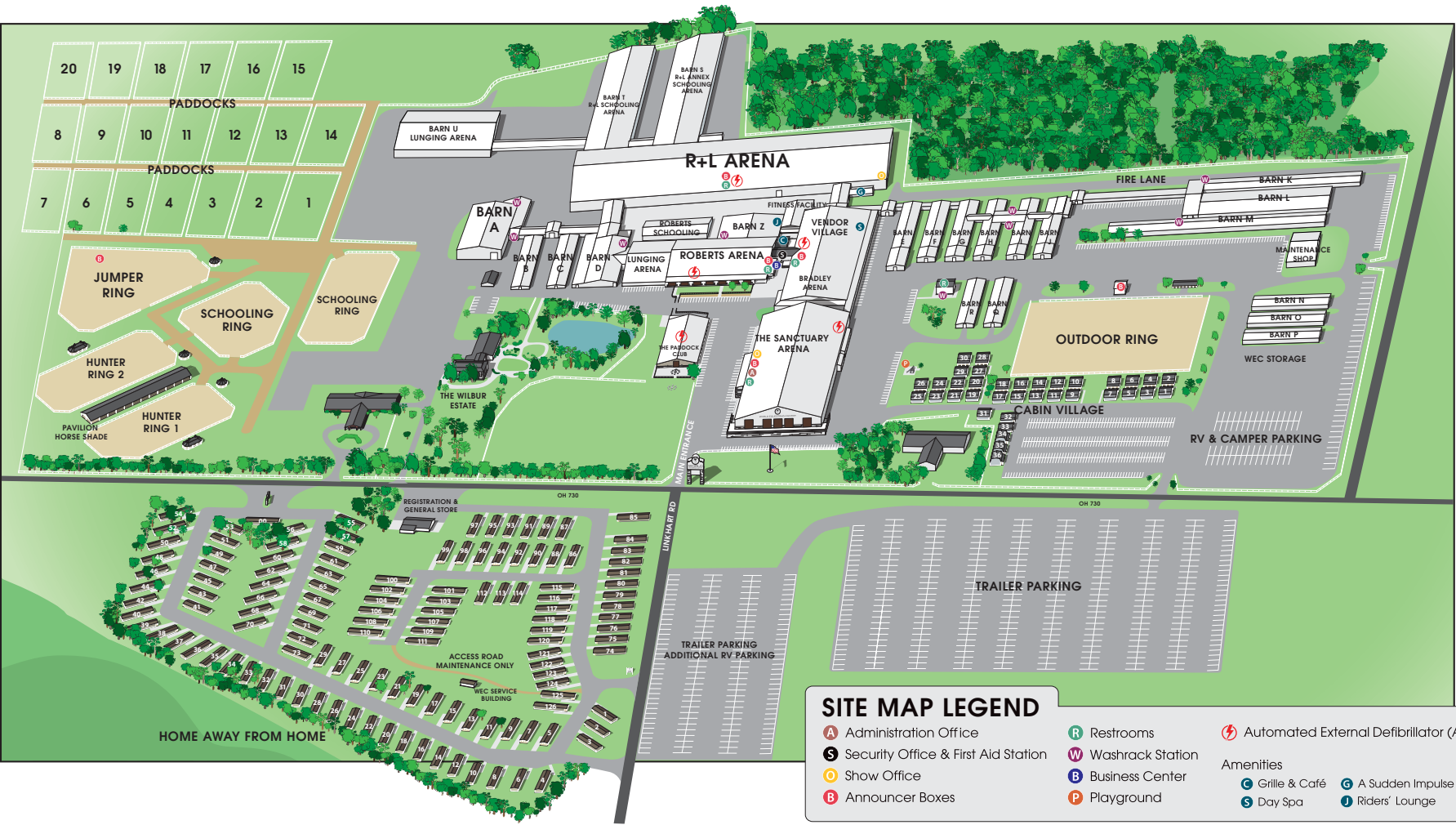
HOME AWAY from Home



THE Wilbur ESTATE

WELCOME EVENT VENDORS

FACILITY MAP



Shop, Leisure and Services

The Paddock Club

Kitchen: Wed - Sat: 5pm-9pm
Bar: Wed - Sat: 4pm-11pm

Sugar Shack

Closed Monday & Tuesday
Wed - Sun: 10am-6pm

Shaggy Chic Service Dog Wash

Vendor Village
Open 24/7

Dark Horse Coffee Co.

Proudly serving Starbucks®
Closed Monday
Tues - Sun: 6:30am-5pm

International Grille & Café

Closed Monday
Tues: 6:30am-5pm
Wed - Sun: 6:30am-Show closing

A Sudden Impulse

Official WEC merchandise and embroidery
Wed - Sun: 9am-5:30pm
*Sunday - closing time may vary
suddenimpulse.com

A Bit of Class Salon & Day Spa

Diane Bayless | Stylist | Text 937.728.4984
Katrina Hale | Licensed Massage Therapist
Text 937.992.3695